



SZABO SCANDIC

Part of Europa Biosite

Produktinformation



Forschungsprodukte & Biochemikalien



Zellkultur & Verbrauchsmaterial



Diagnostik & molekulare Diagnostik



Laborgeräte & Service

Weitere Information auf den folgenden Seiten!
See the following pages for more information!



Lieferung & Zahlungsart

siehe unsere [Liefer- und Versandbedingungen](#)

Zuschläge

- Mindermengenzuschlag
- Trockeneiszuschlag
- Gefahrgutzuschlag
- Expressversand

SZABO-SCANDIC HandelsgmbH

Quellenstraße 110, A-1100 Wien

T. +43(0)1 489 3961-0

F. +43(0)1 489 3961-7

mail@szabo-scandic.com

www.szabo-scandic.com

[linkedin.com/company/szaboscandic](https://www.linkedin.com/company/szaboscandic)

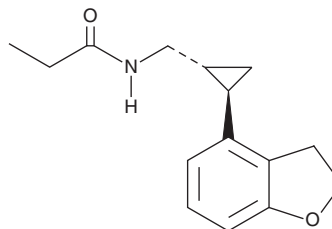
PRODUCT INFORMATION



Tasimelteon

Item No. 23546

CAS Registry No.: 609799-22-6
Formal Name: N-[[[(1R,2R)-2-(2,3-dihydro-4-benzofuranyl)cyclopropyl]methyl]-propanamide
Synonym: BMS 214778
MF: C₁₅H₁₉NO₂
FW: 245.3
Purity: ≥98%
UV/Vis.: λ_{max}: 287 nm
Supplied as: A crystalline solid
Storage: -20°C
Stability: ≥5 years



Information represents the product specifications. Batch specific analytical results are provided on each certificate of analysis.

Laboratory Procedures

Tasimelteon is supplied as a crystalline solid. A stock solution may be made by dissolving the tasimelteon in the solvent of choice. Tasimelteon is soluble in organic solvents such as ethanol, DMSO, and dimethyl formamide, which should be purged with an inert gas. The solubility of tasimelteon in these solvents is approximately 30 mg/ml.

Description

Tasimelteon is a melatonin (MT) receptor agonist.¹ It selectively binds MT₁ and MT₂ receptors (K_is = 0.304 and 0.069 nM, respectively, in NIH3T3 cells expressing the recombinant human receptors) over a panel of 160 additional receptors and enzymes at 10 μM. Tasimelteon inhibits forskolin-induced cAMP accumulation with EC₅₀ values of 0.79 and 1 nM in NIH3T3 cells expressing the MT₁ or MT₂ receptor, respectively. Formulations containing tasimelteon have been used in the treatment of non-24-hour sleep-wake disorder.

Reference

1. Lavedan, C., Forsberg, M., and Gentile, A.J. Tasimelteon: A selective and unique receptor binding profile. *Neuropharmacology* **91**, 142-147 (2015).

WARNING

THIS PRODUCT IS FOR RESEARCH ONLY - NOT FOR HUMAN OR VETERINARY DIAGNOSTIC OR THERAPEUTIC USE.

SAFETY DATA

This material should be considered hazardous until further information becomes available. Do not ingest, inhale, get in eyes, on skin, or on clothing. Wash thoroughly after handling. Before use, the user must review the [complete](#) Safety Data Sheet, which has been sent via email to your institution.

WARRANTY AND LIMITATION OF REMEDY

Buyer agrees to purchase the material subject to Cayman's Terms and Conditions. Complete Terms and Conditions including Warranty and Limitation of Liability information can be found on our website.

Copyright Cayman Chemical Company, 12/21/2020

CAYMAN CHEMICAL

1180 EAST ELLSWORTH RD
ANN ARBOR, MI 48108 · USA

PHONE: [800] 364-9897
[734] 971-3335

FAX: [734] 971-3640

CUSTSERV@CAYMANCHEM.COM
WWW.CAYMANCHEM.COM