



# SZABO SCANDIC

Part of Europa Biosite

## Produktinformation



Forschungsprodukte & Biochemikalien



Zellkultur & Verbrauchsmaterial



Diagnostik & molekulare Diagnostik



Laborgeräte & Service

Weitere Information auf den folgenden Seiten!  
See the following pages for more information!



### Lieferung & Zahlungsart

siehe unsere [Liefer- und Versandbedingungen](#)

### Zuschläge

- Mindermengenzuschlag
- Trockeneiszuschlag
- Gefahrgutzuschlag
- Expressversand

### SZABO-SCANDIC HandelsgmbH

Quellenstraße 110, A-1100 Wien

T. +43(0)1 489 3961-0

F. +43(0)1 489 3961-7

[mail@szabo-scandic.com](mailto:mail@szabo-scandic.com)

[www.szabo-scandic.com](http://www.szabo-scandic.com)

[linkedin.com/company/szaboscandic](https://www.linkedin.com/company/szaboscandic) 

# PRODUCT INFORMATION



## C24 3'-sulfo Galactosylceramide (d18:1/24:0)

Item No. 24351

CAS Registry No.: 151122-71-3

Formal Name: N-[(1S,2R,3E)-2-hydroxy-1-[[3-O-sulfo-β-D-galactopyranosyl]oxy]methyl]-3-heptadecen-1-yl]-tetracosanamide

Synonyms: (3'-sulfo)Galβ-Cer(d18:1/24:0), 3'-sulfo Galactosylceramide (d18:1/24:0), C24 Sulfatide, N-Tetracosanoyl Sulfatide

MF: C<sub>48</sub>H<sub>93</sub>NO<sub>11</sub>S

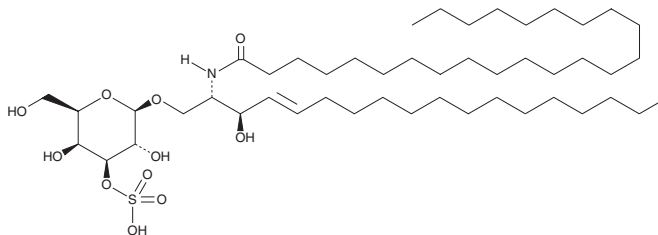
FW: 892.3

Purity: ≥98%

Supplied as: A solid

Storage: -20°C

Stability: ≥2 years



Information represents the product specifications. Batch specific analytical results are provided on each certificate of analysis.

### Laboratory Procedures

C24 3'-sulfo Galactosylceramide (d18:1/24:0) is supplied as a solid. A stock solution may be made by dissolving the C24 3'-sulfo galactosylceramide (d18:1/24:0) in the solvent of choice. C24 3'-sulfo Galactosylceramide (d18:1/24:0) is soluble in a 5:1 solution of chloroform:methanol.

### Description

C24 3'-sulfo Galactosylceramide is a member of the sulfatide class of glycolipids. C24 3'-sulfo Galactosylceramide is the major sulfatide in mature myelin in the central and peripheral nervous systems.<sup>1</sup> Levels of C24 3'-sulfo galactosylceramide are elevated in plasma derived from patients with metachromatic leukodystrophy, a disorder characterized by arylsulfatase A deficiency, leading to sulfatide accumulation.<sup>2</sup> Unlike C24:1 3'-sulfo galactosylceramide, it does not induce an immune response in mouse splenocytes *in vitro*.<sup>3</sup>

### References

1. Svennerholm, L. and Ställberg-Stenhagen, S. Changes in the fatty acid composition of cerebrosides and sulfatides of human nervous tissue with age. *J. Lipid Res.* **9(2)**, 215-225 (1968).
2. Saville, J.T., Smith, N.J.C., Fletcher, J.M., *et al.* Quantification of plasma sulfatides by mass spectrometry: Utility for metachromatic leukodystrophy. *Anal. Chim. Acta* **955**, 79-85 (2017).
3. Zajonc, D.M., Maricic, I., Wu, D., *et al.* Structural basis for CD1d presentation of a sulfatide derived from myelin and its implications for autoimmunity. *J. Exp. Med.* **202(11)**, 1517-1526 (2005).

#### WARNING

THIS PRODUCT IS FOR RESEARCH ONLY - NOT FOR HUMAN OR VETERINARY DIAGNOSTIC OR THERAPEUTIC USE.

#### SAFETY DATA

This material should be considered hazardous until further information becomes available. Do not ingest, inhale, get in eyes, on skin, or on clothing. Wash thoroughly after handling. Before use, the user must review the complete Safety Data Sheet, which has been sent via email to your institution.

#### WARRANTY AND LIMITATION OF REMEDY

Buyer agrees to purchase the material subject to Cayman's Terms and Conditions. Complete Terms and Conditions including Warranty and Limitation of Liability information can be found on our website.

Copyright Cayman Chemical Company, 05/12/2021

#### CAYMAN CHEMICAL

1180 EAST ELLSWORTH RD

ANN ARBOR, MI 48108 · USA

PHONE: [800] 364-9897

[734] 971-3335

FAX: [734] 971-3640

CUSTSERV@CAYMANCHEM.COM

WWW.CAYMANCHEM.COM