



SZABO SCANDIC

Part of Europa Biosite

Produktinformation



Forschungsprodukte & Biochemikalien



Zellkultur & Verbrauchsmaterial



Diagnostik & molekulare Diagnostik



Laborgeräte & Service

Weitere Information auf den folgenden Seiten!
See the following pages for more information!



Lieferung & Zahlungsart

siehe unsere [Liefer- und Versandbedingungen](#)

Zuschläge

- Mindermengenzuschlag
- Trockeneiszuschlag
- Gefahrgutzuschlag
- Expressversand

SZABO-SCANDIC HandelsgmbH

Quellenstraße 110, A-1100 Wien

T. +43(0)1 489 3961-0

F. +43(0)1 489 3961-7

mail@szabo-scandic.com

www.szabo-scandic.com

[linkedin.com/company/szaboscandic](https://www.linkedin.com/company/szaboscandic) 

PRODUCT INFORMATION



C16 Lactosylceramide (d18:1/16:0)

Item No. 24352

CAS Registry No.: 4201-62-1

Formal Name: N-[(1S,2R,3E)-1-[[[4-O-β-D-galactopyranosyl-β-D-glucopyranosyl]oxy]methyl]-2-hydroxy-3-heptadecen-1-yl]-hexadecanamide

Synonyms: N-Hexadecanoyl Lactosylceramide, LacCer(d18:1/16:0), Lactosylceramide (d18:1/16:0), C16 Lactosyl(β) Ceramide (d18:1/16:0)

MF: C₄₆H₈₇NO₁₃

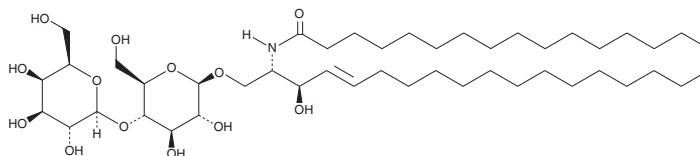
FW: 862.2

Purity: ≥98%

Supplied as: A solid

Storage: -20°C

Stability: ≥2 years



Information represents the product specifications. Batch specific analytical results are provided on each certificate of analysis.

Laboratory Procedures

C16 Lactosylceramide (d18:1/16:0) is supplied as a solid. A stock solution may be made by dissolving the C16 lactosylceramide (d18:1/16:0) in the solvent of choice. C16 Lactosylceramide (d18:1/16:0) is soluble in a 2:1:0.1 solution of chloroform:methanol:DI water.

Description

C16 Lactosylceramide is an endogenous bioactive sphingolipid.¹ It forms membrane microdomains with Lyn kinase and the α_i subunits of inhibitory G protein-coupled receptors (GPCRs), suggesting a role in cell signaling. Plasma levels of C16 lactosylceramide are elevated in insulin-resistant cattle.² C16 Lactosylceramide is also upregulated in a mouse model of Niemann-Pick type C1 disease, a neurodegenerative cholesterol-sphingolipid lysosomal storage disorder.³

References

1. Iwabuchi, K., Nakayama, H., Oizumi, A., *et al.* Role of ceramide from glycosphingolipids and its metabolites in immunological and inflammatory responses in humans. *Mediators Inflamm.* **120748**, (2015).
2. Rico, J.E., Bandaru, V.V., Dorskind, J.M., *et al.* Plasma ceramides are elevated in overweight Holstein dairy cows experiencing greater lipolysis and insulin resistance during the transition from late pregnancy to early lactation. *J. Dairy Sci.* **98(11)**, 7757-7770 (2015).
3. Praggastis, M., Tortelli, B., Zhang, J., *et al.* A murine Niemann-Pick C1 I1061T knock-in model recapitulates the pathological features of the most prevalent human disease allele. *J. Neurosci.* **35(21)**, 8091-8106 (2015).

WARNING

THIS PRODUCT IS FOR RESEARCH ONLY - NOT FOR HUMAN OR VETERINARY DIAGNOSTIC OR THERAPEUTIC USE.

SAFETY DATA

This material should be considered hazardous until further information becomes available. Do not ingest, inhale, get in eyes, on skin, or on clothing. Wash thoroughly after handling. Before use, the user must review the [complete](#) Safety Data Sheet, which has been sent via email to your institution.

WARRANTY AND LIMITATION OF REMEDY

Buyer agrees to purchase the material subject to Cayman's Terms and Conditions. Complete Terms and Conditions including Warranty and Limitation of Liability information can be found on our website.

Copyright Cayman Chemical Company, 03/21/2018

CAYMAN CHEMICAL

1180 EAST ELLSWORTH RD
ANN ARBOR, MI 48108 · USA

PHONE: [800] 364-9897
[734] 971-3335

FAX: [734] 971-3640

CUSTSERV@CAYMANCHEM.COM
WWW.CAYMANCHEM.COM