



SZABO SCANDIC

Part of Europa Biosite

Produktinformation



Forschungsprodukte & Biochemikalien



Zellkultur & Verbrauchsmaterial



Diagnostik & molekulare Diagnostik



Laborgeräte & Service

Weitere Information auf den folgenden Seiten!
See the following pages for more information!



Lieferung & Zahlungsart

siehe unsere [Liefer- und Versandbedingungen](#)

Zuschläge

- Mindermengenzuschlag
- Trockeneiszuschlag
- Gefahrgutzuschlag
- Expressversand

SZABO-SCANDIC HandelsgmbH

Quellenstraße 110, A-1100 Wien

T. +43(0)1 489 3961-0

F. +43(0)1 489 3961-7

mail@szabo-scandic.com

www.szabo-scandic.com

[linkedin.com/company/szaboscandic](https://www.linkedin.com/company/szaboscandic) 

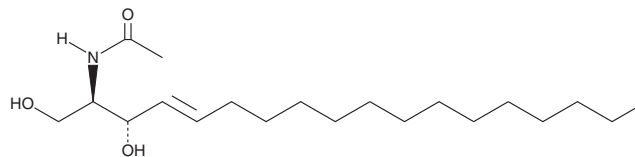
PRODUCT INFORMATION



C2 L-erythro Ceramide (d18:1/2:0)

Item No. 24387

CAS Registry No.: 150338-90-2
Formal Name: N-[(1R,2S,3E)-2-hydroxy-1-(hydroxymethyl)-3-heptadecen-1-yl]-acetamide
Synonyms: L-erythro Cer(d18:1/2:0), L-erythro Ceramide (d18:1/2:0), N-acetyl-L-erythro-Sphingosine
MF: C₂₀H₃₉NO₃
FW: 341.5
Purity: ≥98%
Supplied as: A solid
Storage: -20°C
Stability: ≥2 years



Information represents the product specifications. Batch specific analytical results are provided on each certificate of analysis.

Laboratory Procedures

C2 L-erythro Ceramide (d18:1/2:0) is supplied as a solid. A stock solution may be made by dissolving the C2 L-erythro ceramide (d18:1/2:0) in the solvent of choice, which should be purged with an inert gas. C2 L-erythro Ceramide (d18:1/2:0) is soluble in organic solvents such as chloroform, ethanol, methanol, DMSO, and dimethyl formamide.

Description

C2 L-erythro Ceramide is a bioactive sphingolipid and a cell-permeable analog of naturally occurring ceramides.¹ It stimulates cholesterol efflux in CHO cells expressing the human ABCA1 receptor when used at a concentration of 10 μM, however, this efflux is >50% less than that stimulated by C2 ceramide (Item No. 62510). C2 L-erythro Ceramide also induces cell cycle arrest in the G₀/G₁ phase and a 50-fold increase in sphingosine accumulation as well as inhibits growth of HL-60 leukemia cells.^{2,3}

References

1. Ghering, A.B. and Davidson, W.S. Ceramide structural features required to stimulate ABCA1-mediated cholesterol efflux to apolipoprotein A-I. *J. Lipid Res.* **47(12)**, 2781-2788 (2006).
2. Baek, M.Y., Yoo, H.S., Nakaya, K., *et al.* Sphingolipid metabolic changes during chiral C2-ceramides induced apoptosis in human leukemia cells. *Arch. Pharm. Res.* **24(2)**, 144-149 (2001).
3. Bielawska, A., Crane, H.M., Liotta, D., *et al.* Selectivity of ceramide-mediated biology. *J. Biol. Chem.* **268(35)**, 26226-26232 (1993).

WARNING

THIS PRODUCT IS FOR RESEARCH ONLY - NOT FOR HUMAN OR VETERINARY DIAGNOSTIC OR THERAPEUTIC USE.

SAFETY DATA

This material should be considered hazardous until further information becomes available. Do not ingest, inhale, get in eyes, on skin, or on clothing. Wash thoroughly after handling. Before use, the user must review the complete Safety Data Sheet, which has been sent via email to your institution.

WARRANTY AND LIMITATION OF REMEDY

Buyer agrees to purchase the material subject to Cayman's Terms and Conditions. Complete Terms and Conditions including Warranty and Limitation of Liability information can be found on our website.

Copyright Cayman Chemical Company, 09/03/2021

CAYMAN CHEMICAL

1180 EAST ELLSWORTH RD
ANN ARBOR, MI 48108 · USA

PHONE: [800] 364-9897
[734] 971-3335

FAX: [734] 971-3640

CUSTSERV@CAYMANCHEM.COM
WWW.CAYMANCHEM.COM