



SZABO SCANDIC

Part of Europa Biosite

Produktinformation



Forschungsprodukte & Biochemikalien



Zellkultur & Verbrauchsmaterial



Diagnostik & molekulare Diagnostik



Laborgeräte & Service

Weitere Information auf den folgenden Seiten!
See the following pages for more information!



Lieferung & Zahlungsart

siehe unsere [Liefer- und Versandbedingungen](#)

Zuschläge

- Mindermengenzuschlag
- Trockeneiszuschlag
- Gefahrgutzuschlag
- Expressversand

SZABO-SCANDIC HandelsgmbH

Quellenstraße 110, A-1100 Wien

T. +43(0)1 489 3961-0

F. +43(0)1 489 3961-7

mail@szabo-scandic.com

www.szabo-scandic.com

[linkedin.com/company/szaboscandic](https://www.linkedin.com/company/szaboscandic) 

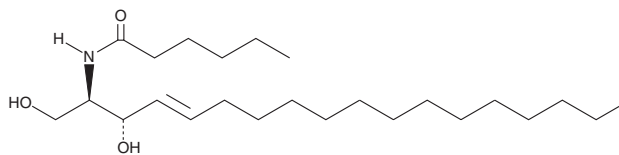
PRODUCT INFORMATION



C6 L-erythro Ceramide (d18:1/6:0)

Item No. 24388

CAS Registry No.: 189894-78-8
Formal Name: N-[(1R,2S,3E)-2-hydroxy-1-(hydroxymethyl)-3-heptadecen-1-yl]-hexanamide
Synonyms: L-erythro Cer(d18:1/6:0), L-erythro Ceramide (d18:1/6:0), N-hexanoyl-L-erythro-Sphingosine
MF: C₂₄H₄₇NO₃
FW: 397.6
Purity: ≥98%
Supplied as: A solid
Storage: -20°C
Stability: ≥2 years



Information represents the product specifications. Batch specific analytical results are provided on each certificate of analysis.

Laboratory Procedures

C6 L-erythro Ceramide (d18:1/6:0) is supplied as a solid. A stock solution may be made by dissolving the C6 L-erythro ceramide (d18:1/6:0) in the solvent of choice. C6 L-erythro Ceramide (d18:1/6:0) is soluble in organic solvents such as chloroform, ethanol, DMSO, and dimethyl formamide (DMF), which should be purged with an inert gas. The solubility of C6 L-erythro ceramide (d18:1/6:0) in DMF is approximately 5 mg/ml.

Description

C6 L-erythro Ceramide is a bioactive sphingolipid and cell-permeable analog of naturally occurring ceramides.^{1,2} It is metabolized by ceramide glucosyltransferase to form C6 L-erythro glucosylceramide. C6 L-erythro Ceramide is cytotoxic to U937 cells (IC₅₀ = 18 μM).³

References

- Schwarz, A. and Futerman, A.H. Distinct roles for ceramide and glucosylceramide at different stages of neuronal growth. *J. Neurosci.* **17**(9), 2929-2938 (1997).
- Paul, P., Kamisaka, Y., Marks, D.L., et al. Purification and characterization of UDP-glucose: Ceramide glucosyltransferase from rat liver Golgi membranes. *J. Biol. Chem.* **271**(4), 2287-2293 (1996).
- Chang, Y.-T., Choi, J., Ding, S., et al. The synthesis and biological characterization of a ceramide library. *J. Am. Chem. Soc.* **124**(9), 1856-1857 (2002).

WARNING

THIS PRODUCT IS FOR RESEARCH ONLY - NOT FOR HUMAN OR VETERINARY DIAGNOSTIC OR THERAPEUTIC USE.

SAFETY DATA

This material should be considered hazardous until further information becomes available. Do not ingest, inhale, get in eyes, on skin, or on clothing. Wash thoroughly after handling. Before use, the user must review the complete Safety Data Sheet, which has been sent via email to your institution.

WARRANTY AND LIMITATION OF REMEDY

Buyer agrees to purchase the material subject to Cayman's Terms and Conditions. Complete Terms and Conditions including Warranty and Limitation of Liability information can be found on our website.

Copyright Cayman Chemical Company, 02/08/2018

CAYMAN CHEMICAL

1180 EAST ELLSWORTH RD
ANN ARBOR, MI 48108 · USA

PHONE: [800] 364-9897

[734] 971-3335

FAX: [734] 971-3640

CUSTSERV@CAYMANCHEM.COM
WWW.CAYMANCHEM.COM