



# SZABO SCANDIC

Part of Europa Biosite

## Produktinformation



Forschungsprodukte & Biochemikalien



Zellkultur & Verbrauchsmaterial



Diagnostik & molekulare Diagnostik



Laborgeräte & Service

Weitere Information auf den folgenden Seiten!  
See the following pages for more information!



### Lieferung & Zahlungsart

siehe unsere [Liefer- und Versandbedingungen](#)

### Zuschläge

- Mindermengenzuschlag
- Trockeneiszuschlag
- Gefahrgutzuschlag
- Expressversand

### SZABO-SCANDIC HandelsgmbH

Quellenstraße 110, A-1100 Wien

T. +43(0)1 489 3961-0

F. +43(0)1 489 3961-7

[mail@szabo-scandic.com](mailto:mail@szabo-scandic.com)

[www.szabo-scandic.com](http://www.szabo-scandic.com)

[linkedin.com/company/szaboscandic](https://www.linkedin.com/company/szaboscandic)

# PRODUCT INFORMATION



## C6 L-threo Ceramide (d18:1/6:0)

Item No. 24390

**CAS Registry No.:** 189894-80-2  
**Formal Name:** N-[(1S,2S,3E)-2-hydroxy-1-(hydroxymethyl)-3-heptadecen-1-yl]-hexanamide

**Synonyms:** L-threo Cer(d18:1/6:0), L-threo Ceramide (d18:1/6:0), N-hexanoyl-L-threo-Sphingosine

**MF:** C<sub>24</sub>H<sub>47</sub>NO<sub>3</sub>

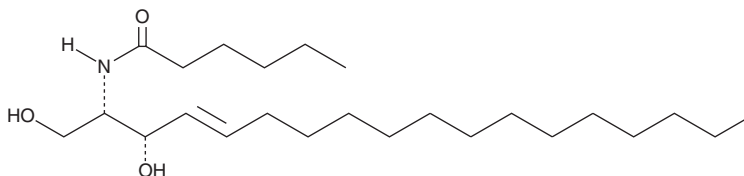
**FW:** 397.6

**Purity:** ≥98%

**Supplied as:** A solid

**Storage:** -20°C

**Stability:** ≥2 years



Information represents the product specifications. Batch specific analytical results are provided on each certificate of analysis.

### Laboratory Procedures

C6 L-threo Ceramide (d18:1/6:0) is supplied as a solid. A stock solution may be made by dissolving the C6 L-threo ceramide (d18:1/6:0) in the solvent of choice. C6 L-threo Ceramide (d18:1/6:0) is soluble in organic solvents such as chloroform, ethanol, DMSO, and dimethyl formamide (DMF), which should be purged with an inert gas. The solubility of C6 L-threo ceramide (d18:1/6:0) in DMF is approximately 5 mg/ml.

### Description

C6 L-threo Ceramide is a bioactive sphingolipid and cell-permeable analog of naturally occurring ceramides.<sup>1,2</sup> C6 L-threo Ceramide is cytotoxic to U937 cells *in vitro* (IC<sub>50</sub> = 18 μM).<sup>3</sup> It is metabolically inactive and, unlike C6 L-erythro ceramide (Item No. 24388), C6 L-threo ceramide cannot be converted to C6 glucosylceramide by ceramide glucosyltransferase.<sup>2</sup> C6 L-threo Ceramide enhances IL-4 production induced by phorbol 12-myristate 13-acetate (PMA; Item No. 10008014) in EL4 T cells when used at a concentration of 10 μM.<sup>4</sup>

### References

- Schwarz, A. and Futerman, A.H. Distinct roles for ceramide and glucosylceramide at different stages of neuronal growth. *J. Neurosci.* **17(9)**, 2929-2938 (1997).
- Paul, P., Kamisaka, Y., Marks, D.L., *et al.* Purification and characterization of UDP-glucose: Ceramide glucosyltransferase from rat liver Golgi membranes. *J. Biol. Chem.* **271(4)**, 2287-2293 (1996).
- Chang, Y.-T., Choi, J., Ding, S., *et al.* The synthesis and biological characterization of a ceramide library. *J. Am. Chem. Soc.* **124(9)**, 1856-1857 (2002).
- Park, J., Li, Q., Chang, Y.T., *et al.* Inhibitory activity of a ceramide library in interleukin-4 production from activated T cells. *Bioorg. Med. Chem.* **13(7)**, 2589-2595 (2005).

#### WARNING

THIS PRODUCT IS FOR RESEARCH ONLY - NOT FOR HUMAN OR VETERINARY DIAGNOSTIC OR THERAPEUTIC USE.

#### SAFETY DATA

This material should be considered hazardous until further information becomes available. Do not ingest, inhale, get in eyes, on skin, or on clothing. Wash thoroughly after handling. Before use, the user must review the complete Safety Data Sheet, which has been sent via email to your institution.

#### WARRANTY AND LIMITATION OF REMEDY

Buyer agrees to purchase the material subject to Cayman's Terms and Conditions. Complete Terms and Conditions including Warranty and Limitation of Liability information can be found on our website.

Copyright Cayman Chemical Company, 04/06/2018

#### CAYMAN CHEMICAL

1180 EAST ELLSWORTH RD

ANN ARBOR, MI 48108 · USA

**PHONE:** [800] 364-9897

[734] 971-3335

**FAX:** [734] 971-3640

CUSTSERV@CAYMANCHEM.COM

WWW.CAYMANCHEM.COM