



# SZABO SCANDIC

Part of Europa Biosite

## Produktinformation



Forschungsprodukte & Biochemikalien



Zellkultur & Verbrauchsmaterial



Diagnostik & molekulare Diagnostik



Laborgeräte & Service

Weitere Information auf den folgenden Seiten!  
See the following pages for more information!



### Lieferung & Zahlungsart

siehe unsere [Liefer- und Versandbedingungen](#)

### Zuschläge

- Mindermengenzuschlag
- Trockeneiszuschlag
- Gefahrgutzuschlag
- Expressversand

### SZABO-SCANDIC HandelsgmbH

Quellenstraße 110, A-1100 Wien

T. +43(0)1 489 3961-0

F. +43(0)1 489 3961-7

[mail@szabo-scandic.com](mailto:mail@szabo-scandic.com)

[www.szabo-scandic.com](http://www.szabo-scandic.com)

[linkedin.com/company/szaboscandic](https://www.linkedin.com/company/szaboscandic) 

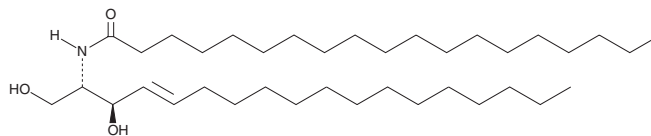
# PRODUCT INFORMATION



## C19 Ceramide (d18:1/19:0)

Item No. 24395

**CAS Registry No.:** 67492-17-5  
**Formal Name:** N-[(1S,2R,3E)-2-hydroxy-1-(hydroxymethyl)-3-heptadecen-1-yl]-nonadecanamide  
**Synonyms:** Cer(d18:1/19:0), Ceramide (d18:1/19:0), N-nonadecanoyl-D-erythro-Sphingosine  
**MF:** C<sub>37</sub>H<sub>73</sub>NO<sub>3</sub>  
**FW:** 580.0  
**Purity:** ≥98%  
**Supplied as:** A solid  
**Storage:** -20°C  
**Stability:** ≥2 years



Information represents the product specifications. Batch specific analytical results are provided on each certificate of analysis.

### Laboratory Procedures

C19 Ceramide (d18:1/19:0) is supplied as a solid. A stock solution may be made by dissolving the C19 ceramide (d18:1/19:0) in the solvent of choice. C19 Ceramide (d18:1/19:0) is soluble in such as ethanol (warmed), methanol (warmed), and chloroform.

### Description

C19 Ceramide is a naturally occurring ceramide that has been found in *J. juncea* extracts as well as rat brain and mouse heart.<sup>1-3</sup> It is elevated in adult and decreased in juvenile whole rat brain extracts by 114 and 37%, respectively, following chronic ethanol exposure.<sup>2</sup> C19 Ceramide is also increased in mouse hearts following administration of angiotensin II (Item No. 17150).<sup>3</sup>

### References

1. Krishna, N., Muralidhar, P., Kumar, M.M., *et al.* A new sphingolipid from the gorgonian *Junceella juncea* of the Indian ocean. *Nat. Prod. Res.* **18(6)**, 551-555 (2004).
2. Roux, A., Muller, L., Jackson, S.N., *et al.* Chronic ethanol consumption profoundly alters regional brain ceramide and sphingomyelin content in rodents. *ACS Chem Neurosci.* **6(2)**, 247-259 (2015).
3. Glenn, D.J., Cardema, M.C., Ni, W., *et al.* Cardiac steatosis potentiates angiotensin II effects in the heart. *Am. J. Physiol. Heart Circ. Physiol.* **308(4)**, H339-H350 (2015).

#### WARNING

THIS PRODUCT IS FOR RESEARCH ONLY - NOT FOR HUMAN OR VETERINARY DIAGNOSTIC OR THERAPEUTIC USE.

#### SAFETY DATA

This material should be considered hazardous until further information becomes available. Do not ingest, inhale, get in eyes, on skin, or on clothing. Wash thoroughly after handling. Before use, the user must review the complete Safety Data Sheet, which has been sent via email to your institution.

#### WARRANTY AND LIMITATION OF REMEDY

Buyer agrees to purchase the material subject to Cayman's Terms and Conditions. Complete Terms and Conditions including Warranty and Limitation of Liability information can be found on our website.

Copyright Cayman Chemical Company, 04/09/2018

#### CAYMAN CHEMICAL

1180 EAST ELLSWORTH RD

ANN ARBOR, MI 48108 · USA

**PHONE:** [800] 364-9897

[734] 971-3335

**FAX:** [734] 971-3640

CUSTSERV@CAYMANCHEM.COM

WWW.CAYMANCHEM.COM