



SZABO SCANDIC

Part of Europa Biosite

Produktinformation



Forschungsprodukte & Biochemikalien



Zellkultur & Verbrauchsmaterial



Diagnostik & molekulare Diagnostik



Laborgeräte & Service

Weitere Information auf den folgenden Seiten!
See the following pages for more information!



Lieferung & Zahlungsart

siehe unsere [Liefer- und Versandbedingungen](#)

Zuschläge

- Mindermengenzuschlag
- Trockeneiszuschlag
- Gefahrgutzuschlag
- Expressversand

SZABO-SCANDIC HandelsgmbH

Quellenstraße 110, A-1100 Wien

T. +43(0)1 489 3961-0

F. +43(0)1 489 3961-7

mail@szabo-scandic.com

www.szabo-scandic.com

[linkedin.com/company/szaboscandic](https://www.linkedin.com/company/szaboscandic) 

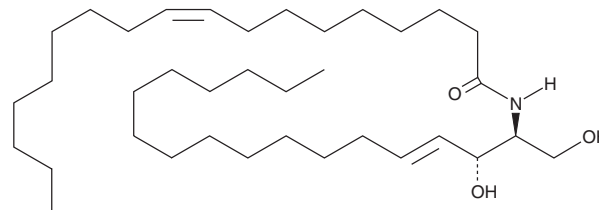
PRODUCT INFORMATION



C18:1 Ceramide (d18:1/18:1(9Z))

Item No. 24397

CAS Registry No.: 5966-28-9
Formal Name: N-[(1S,2R,3E)-2-hydroxy-1-(hydroxymethyl)-3-heptadecen-1-yl]-9Z-octadecenamide
Synonyms: Cer(d18:1/18:1(9Z)), C18:1 Ceramide
Ceramide (d18:1/18:1(9Z)),
N-Octadecenoyl-(cis-9)-D-erythro-Sphingosine
MF: C₃₆H₆₉NO₃
FW: 563.9
Purity: ≥98%
Supplied as: A solid
Storage: -20°C
Stability: ≥2 years



Information represents the product specifications. Batch specific analytical results are provided on each certificate of analysis.

Laboratory Procedures

C18:1 Ceramide (d18:1/18:1(9Z)) is supplied as a solid. A stock solution may be made by dissolving the C18:1 ceramide (d18:1/18:1(9Z)) in the solvent of choice. C18:1 Ceramide (d18:1/18:1(9Z)) is soluble in ethanol (hot), chloroform, and dimethyl formamide.

Description

C18:1 Ceramide is a naturally occurring ceramide.¹⁻³ Levels of C18:1 ceramide are elevated in overweight and insulin-resistant mice and cattle.^{1,2} C18:1 Ceramide is also increased in the plasma and ovarian tissue of patients with advanced ovarian cancer.³

References

1. Sajan, M.P., Ivey, R.A., Lee, M.C., *et al.* Hepatic insulin resistance in ob/ob mice involves increases in ceramide, aPKC activity, and selective impairment of Akt-dependent FoxO1 phosphorylation. *J. Lipid Res.* **56(1)**, 70-80 (2015).
2. Rico, J.E., Bandaru, V.V., Dorskind, J.M., *et al.* Plasma ceramides are elevated in overweight Holstein dairy cows experiencing greater lipolysis and insulin resistance during the transition from late pregnancy to early lactation. *J. Dairy Sci.* **98(11)**, 7757-7770 (2015).
3. Knapp, P., Bodnar, L., Błachnio-Zabielska, A., *et al.* Plasma and ovarian tissue sphingolipids profiling in patients with advanced ovarian cancer. *Gynecol. Oncol.* **147(1)**, 139-144 (2017).

WARNING

THIS PRODUCT IS FOR RESEARCH ONLY - NOT FOR HUMAN OR VETERINARY DIAGNOSTIC OR THERAPEUTIC USE.

SAFETY DATA

This material should be considered hazardous until further information becomes available. Do not ingest, inhale, get in eyes, on skin, or on clothing. Wash thoroughly after handling. Before use, the user must review the [complete](#) Safety Data Sheet, which has been sent via email to your institution.

WARRANTY AND LIMITATION OF REMEDY

Buyer agrees to purchase the material subject to Cayman's Terms and Conditions. Complete Terms and Conditions including Warranty and Limitation of Liability information can be found on our website.

Copyright Cayman Chemical Company, 02/16/2018

CAYMAN CHEMICAL

1180 EAST ELLSWORTH RD
ANN ARBOR, MI 48108 · USA

PHONE: [800] 364-9897
[734] 971-3335

FAX: [734] 971-3640

CUSTSERV@CAYMANCHEM.COM
WWW.CAYMANCHEM.COM