



SZABO SCANDIC

Part of Europa Biosite

Produktinformation



Forschungsprodukte & Biochemikalien



Zellkultur & Verbrauchsmaterial



Diagnostik & molekulare Diagnostik



Laborgeräte & Service

Weitere Information auf den folgenden Seiten!
See the following pages for more information!



Lieferung & Zahlungsart

siehe unsere [Liefer- und Versandbedingungen](#)

Zuschläge

- Mindermengenzuschlag
- Trockeneiszuschlag
- Gefahrgutzuschlag
- Expressversand

SZABO-SCANDIC HandelsgmbH

Quellenstraße 110, A-1100 Wien

T. +43(0)1 489 3961-0

F. +43(0)1 489 3961-7

mail@szabo-scandic.com

www.szabo-scandic.com

[linkedin.com/company/szaboscandic](https://www.linkedin.com/company/szaboscandic) 

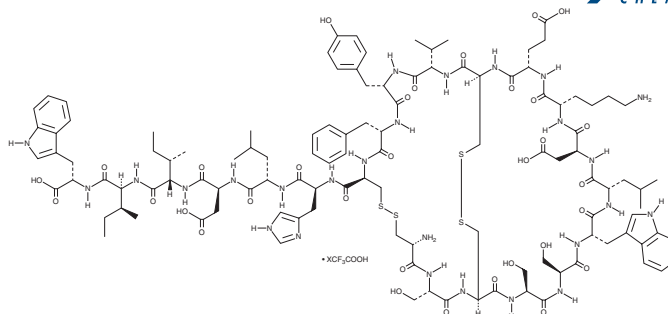
PRODUCT INFORMATION



Endothelin-2 (human) (trifluoroacetate salt)

Item No. 24412

Synonym: ET-2 (human)
MF: C₁₁₅H₁₆₀N₂₆O₃₂S₄ • XCF₃COOH
FW: 2,546.9
Purity: ≥95%
Supplied as: A lyophilized powder
Storage: -20°C
Stability: ≥2 years



Information represents the product specifications. Batch specific analytical results are provided on each certificate of analysis.

Laboratory Procedures

Endothelin-2 (human) (trifluoroacetate salt) is supplied as a lyophilized powder. A stock solution may be made by dissolving the endothelin-2 (human) (trifluoroacetate salt) in water. The solubility of endothelin-2 (human) (trifluoroacetate salt) in water is approximately 1 mg/ml. We do not recommend storing the aqueous solution for more than one day.

Description

Endothelin-2 is a peptide vasoconstrictor and ligand for the endothelin (ET) receptors ET_A and ET_B (K_bs = 32.8 and 1.33 nM, respectively).¹ It induces β-arrestin recruitment in CHO-K1 cells expressing human ET_A and ET_B (pD₂s = 8.75 and 8.55, respectively). *Ex vivo*, endothelin-2 induces vasoconstriction in isolated rat mesenteric arterial beds (ED₅₀ = 90.8 pmol).² Endothelin-2 also induces contraction of isolated rat uteri, an effect which is reversed by the ET_A antagonist BQ-123 but not the ET_B antagonist BQ-788 (Item No. 17403).³ Infusion of endothelin-2 restores vasoconstriction of vessels at the follicular apex of the ovarian follicle and ovulation in Amhr2^{cre/+}Smc2 mice.⁴

References

- Maguire, J.J., Kuc, R.E., Pell, V.R., *et al.* Comparison of human ET_A and ET_B receptor signalling via G-protein and β-arrestin pathways. *Life Sci.* **91(13-14)**, 544-549 (2012).
- Douglas, S.A. and Hiley, C.R. Endothelium-dependent vascular activities of endothelin-like peptides in the isolated superior mesenteric arterial bed of the rat. *Br. J. Pharmacol.* **101(1)**, 81-88 (1990).
- Kousides, M., Story, M.E., and Pennefather, J.N. Endopeptidase 24.11 inhibition does not modify uterotonic effects of endothelins in rat uterus. *Peptides* **19(9)**, 1585-1593 (1998).
- Migone, F.F., Cowan, R.G., Williams, R.M., *et al.* *In vivo* imaging reveals an essential role of vasoconstriction in rupture of the ovarian follicle at ovulation. *Proc. Natl. Acad. Sci. U.S.A.* **113(8)**, 2294-2299 (2016).

WARNING

THIS PRODUCT IS FOR RESEARCH ONLY - NOT FOR HUMAN OR VETERINARY DIAGNOSTIC OR THERAPEUTIC USE.

SAFETY DATA

This material should be considered hazardous until further information becomes available. Do not ingest, inhale, get in eyes, on skin, or on clothing. Wash thoroughly after handling. Before use, the user must review the [complete](#) Safety Data Sheet, which has been sent via email to your institution.

WARRANTY AND LIMITATION OF REMEDY

Buyer agrees to purchase the material subject to Cayman's Terms and Conditions. Complete Terms and Conditions including Warranty and Limitation of Liability information can be found on our website.

Copyright Cayman Chemical Company, 06/20/2018

CAYMAN CHEMICAL

1180 EAST ELLSWORTH RD

ANN ARBOR, MI 48108 · USA

PHONE: [800] 364-9897

[734] 971-3335

FAX: [734] 971-3640

CUSTSERV@CAYMANCHEM.COM

WWW.CAYMANCHEM.COM