



# SZABO SCANDIC

Part of Europa Biosite

## Produktinformation



Forschungsprodukte & Biochemikalien



Zellkultur & Verbrauchsmaterial



Diagnostik & molekulare Diagnostik



Laborgeräte & Service

Weitere Information auf den folgenden Seiten!  
See the following pages for more information!



### Lieferung & Zahlungsart

siehe unsere [Liefer- und Versandbedingungen](#)

### Zuschläge

- Mindermengenzuschlag
- Trockeneiszuschlag
- Gefahrgutzuschlag
- Expressversand

### SZABO-SCANDIC HandelsgmbH

Quellenstraße 110, A-1100 Wien

T. +43(0)1 489 3961-0

F. +43(0)1 489 3961-7

[mail@szabo-scandic.com](mailto:mail@szabo-scandic.com)

[www.szabo-scandic.com](http://www.szabo-scandic.com)

[linkedin.com/company/szaboscandic](https://www.linkedin.com/company/szaboscandic) 

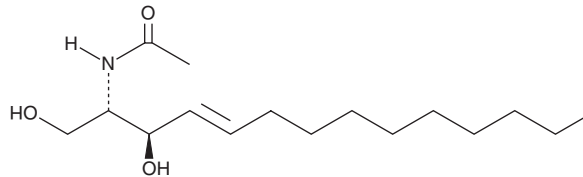
# PRODUCT INFORMATION



## C2 Ceramide (d14:1/2:0)

Item No. 24425

**CAS Registry No.:** 2097561-20-9  
**Formal Name:** N-[(1S,2R,3E)-2-hydroxy-1-(hydroxymethyl)-3-tridecen-1-yl]-acetamide  
**Synonyms:** Cer(d14:1/2:0), Ceramide (d14:1/2:0), N-acetyl-D-erythro-Sphingosine C14  
**MF:** C<sub>16</sub>H<sub>31</sub>NO<sub>3</sub>  
**FW:** 285.4  
**Purity:** ≥98%  
**Supplied as:** A solid  
**Storage:** -20°C  
**Stability:** ≥2 years



Information represents the product specifications. Batch specific analytical results are provided on each certificate of analysis.

### Laboratory Procedures

C2 Ceramide (d14:1/2:0) is supplied as a solid. A stock solution may be made by dissolving the C2 ceramide (d14:1/2:0) in the solvent of choice. C2 Ceramide (d14:1/2:0) is soluble in organic solvents such as chloroform, ethanol, DMSO, and dimethyl formamide (DMF), which should be purged with an inert gas. The solubility of C2 ceramide (d14:1/2:0) in DMF is approximately 5 mg/ml.

### Description

C2 Ceramide (d14:1/2:0) is a bioactive sphingolipid.<sup>1</sup> Dietary administration of C2 ceramide (d14:1/2:0) (100 μM) induces lipotoxic cardiomyopathy *via* increasing diastolic and systolic diameter as well as reducing fractional shortening and the number of normal cardiac contractile events in *Drosophila*.

### Reference

1. Walls, S.M., Cammarato, A., Chatfield, D.A., *et al.* Ceramide-protein interactions modulate ceramide-associated lipotoxic cardiomyopathy. *Cell Rep.* **22(10)**, 2702-2715 (2018).

**WARNING**  
THIS PRODUCT IS FOR RESEARCH ONLY - NOT FOR HUMAN OR VETERINARY DIAGNOSTIC OR THERAPEUTIC USE.

**SAFETY DATA**  
This material should be considered hazardous until further information becomes available. Do not ingest, inhale, get in eyes, on skin, or on clothing. Wash thoroughly after handling. Before use, the user must review the complete Safety Data Sheet, which has been sent via email to your institution.

**WARRANTY AND LIMITATION OF REMEDY**  
Buyer agrees to purchase the material subject to Cayman's Terms and Conditions. Complete Terms and Conditions including Warranty and Limitation of Liability information can be found on our website.

Copyright Cayman Chemical Company, 05/18/2018

### CAYMAN CHEMICAL

1180 EAST ELLSWORTH RD  
ANN ARBOR, MI 48108 · USA

**PHONE:** [800] 364-9897  
[734] 971-3335

**FAX:** [734] 971-3640

CUSTSERV@CAYMANCHEM.COM  
WWW.CAYMANCHEM.COM