



SZABO SCANDIC

Part of Europa Biosite

Produktinformation



Forschungsprodukte & Biochemikalien



Zellkultur & Verbrauchsmaterial



Diagnostik & molekulare Diagnostik



Laborgeräte & Service

Weitere Information auf den folgenden Seiten!
See the following pages for more information!



Lieferung & Zahlungsart

siehe unsere [Liefer- und Versandbedingungen](#)

Zuschläge

- Mindermengenzuschlag
- Trockeneiszuschlag
- Gefahrgutzuschlag
- Expressversand

SZABO-SCANDIC HandelsgmbH

Quellenstraße 110, A-1100 Wien

T. +43(0)1 489 3961-0

F. +43(0)1 489 3961-7

mail@szabo-scandic.com

www.szabo-scandic.com

[linkedin.com/company/szaboscandic](https://www.linkedin.com/company/szaboscandic) 

PRODUCT INFORMATION



C18 3'-sulfo Galactosylceramide-d₃ (d18:1/18:0-d₃)

Item No. 24624

Formal Name: (2R,3R,4S,5S,6R)-3,5-dihydroxy-2-(((2S,3R,E)-3-hydroxy-2-(octadecanamido-18,18,18-d₃)octadec-4-en-1-yl)oxy)-6-(hydroxymethyl)tetrahydro-2H-pyran-4-yl hydrogen sulfate

Synonym: N-Octadecanoyl Sulfatide-d₃

MF: C₄₂H₇₈D₃NO₁₁S

FW: 811.2

Chemical Purity: ≥98% (C18 3'-sulfo Galactosylceramide)

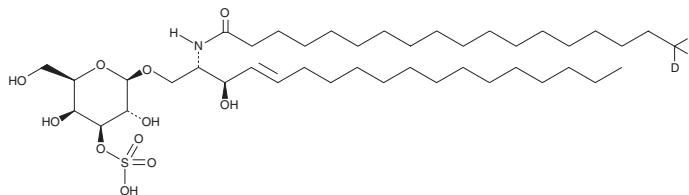
Deuterium

Incorporation: ≥99% deuterated forms (d₁-d₃); ≤1% d₀

Supplied as: A solid

Storage: -20°C

Stability: ≥2 years



Information represents the product specifications. Batch specific analytical results are provided on each certificate of analysis.

Laboratory Procedures

C18 3'-sulfo Galactosylceramide-d₃ (d18:1/18:0-d₃) is intended for use as an internal standard for the quantification of C18 3'-sulfo galactosylceramide (Item No. 24863) by GC- or LC-MS. The accuracy of the sample weight in this vial is between 5% over and 2% under the amount shown on the vial. If better precision is required, the deuterated standard should be quantitated against a more precisely weighed unlabeled standard by constructing a standard curve of peak intensity ratios (deuterated versus unlabeled).

Description

C18 3'-sulfo Galactosylceramide is a minor endogenous sphingolipid produced from C18 ceramide (Item No. 19556) and UDP-galactose in the endoplasmic reticulum followed by sulfation in the Golgi apparatus.¹ It is found in pro-oligodendroblasts and in neurons and accumulates in the lysosome of patients with metachromatic leukodystrophy, a disorder characterized by arylsulfatase A deficiency.¹⁻³ C18 3'-sulfo Galactosylceramide also increases expression of indoleamine 2,3-dioxygenase 1 (DOX1) to catalyze the initial and rate-limiting step in kynurenine pathway tryptophan catabolism in antigen presenting cells to regulate several immune responses.¹

References

1. Takahashi, T. and Suzuki, T. Role of sulfatide in normal and pathological cells and tissues. *J. Lipid Res.* **53**(8), 1437-1450 (2012).
2. Saville, J.T., Smith, N.J.C., Fletcher, J.M., et al. Quantification of plasma sulfatides by mass spectrometry: Utility for metachromatic leukodystrophy. *Anal. Chim. Acta* **955**, 79-85 (2017).
3. Svennerholm, L. and Stållberg-Stenhagen, S. Changes in the fatty acid composition of cerebrosides and sulfatides of human nervous tissue with age. *J. Lipid Res.* **9**(2), 215-225 (1968).

WARNING

THIS PRODUCT IS FOR RESEARCH ONLY - NOT FOR HUMAN OR VETERINARY DIAGNOSTIC OR THERAPEUTIC USE.

SAFETY DATA

This material should be considered hazardous until further information becomes available. Do not ingest, inhale, get in eyes, on skin, or on clothing. Wash thoroughly after handling. Before use, the user must review the complete Safety Data Sheet, which has been sent via email to your institution.

WARRANTY AND LIMITATION OF REMEDY

Buyer agrees to purchase the material subject to Cayman's Terms and Conditions. Complete Terms and Conditions including Warranty and Limitation of Liability information can be found on our website.

Copyright Cayman Chemical Company, 04/26/2018

CAYMAN CHEMICAL

1180 EAST ELLSWORTH RD
ANN ARBOR, MI 48108 · USA

PHONE: [800] 364-9897

[734] 971-3335

FAX: [734] 971-3640

CUSTSERV@CAYMANCHEM.COM

WWW.CAYMANCHEM.COM