



SZABO SCANDIC

Part of Europa Biosite

Produktinformation



Forschungsprodukte & Biochemikalien



Zellkultur & Verbrauchsmaterial



Diagnostik & molekulare Diagnostik



Laborgeräte & Service

Weitere Information auf den folgenden Seiten!
See the following pages for more information!



Lieferung & Zahlungsart

siehe unsere [Liefer- und Versandbedingungen](#)

Zuschläge

- Mindermengenzuschlag
- Trockeneiszuschlag
- Gefahrgutzuschlag
- Expressversand

SZABO-SCANDIC HandelsgmbH

Quellenstraße 110, A-1100 Wien

T. +43(0)1 489 3961-0

F. +43(0)1 489 3961-7

mail@szabo-scandic.com

www.szabo-scandic.com

[linkedin.com/company/szaboscandic](https://www.linkedin.com/company/szaboscandic) 

PRODUCT INFORMATION



GLP-2 (rat) (trifluoroacetate salt)

Item No. 24757

Formal Name: L-histidyl-L-alanyl-L- α -aspartylglycyl-L-seryl-L-phenylalanyl-L-seryl-L- α -aspartyl-L- α -glutamyl-L-methionyl-L-asparaginyl-L-threonyl-L-isoleucyl-L-leucyl-L- α -aspartyl-L-asparaginyl-L-leucyl-L-alanyl-L-threonyl-L-arginyl-L- α -aspartyl-L-phenylalanyl-L-isoleucyl-L-asparaginyl-L-tryptophyl-L-leucyl-L-isoleucyl-L-glutamyl-L-threonyl-L-lysyl-L-isoleucyl-L-threonyl-L-aspartic acid, trifluoroacetate salt

Synonym: Glucagon-like Peptide 2

MF: C₁₆₆H₂₅₆N₄₄O₅₆S • XCF₃COOH

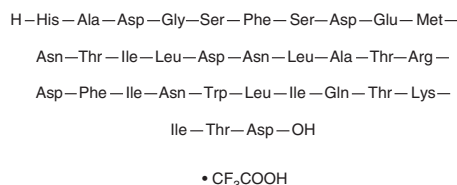
FW: 3,796.1

Purity: \geq 95%

Supplied as: A lyophilized powder

Storage: -20°C

Stability: \geq 2 years



Information represents the product specifications. Batch specific analytical results are provided on each certificate of analysis.

Laboratory Procedures

GLP-2 (rat) (trifluoroacetate salt) is supplied as a lyophilized powder. A stock solution may be made by dissolving the GLP-2 (rat) (trifluoroacetate salt) in the solvent of choice. GLP-2 (rat) (trifluoroacetate salt) is soluble in the organic solvent formic acid, which should be purged with an inert gas, at a concentration of approximately 1 mg/ml.

Description

Glucagon-like peptide 2 (GLP-2) is a gut peptide hormone antagonist of the GLP-2 receptor (GLP-2R; K_i = 60 pM).¹ It increases cAMP levels in COS cells expressing GLP-2R with an EC₅₀ value of 0.58 nM. GLP-2 is primarily produced by enteroendocrine L cells of the small and large intestine but can also be found in the hypothalamus.^{1,2} *In vivo*, GLP-2 (43.75 μ g twice per day for 10 days) increases small bowel weight by 50% and increases villus height and crypt cell proliferation in the small intestine in mice.³ GLP-2 (10 μ g per animal) reduces two-hour food intake in rats by 37% with no reduction in water intake.² Secretion of GLP-2 in rats is stimulated by dietary carbohydrates, glucose, dextrin, and oils rich in polyunsaturated or monounsaturated fatty acids.⁴

References

1. Munroe, D.G., Gupta, A.K., Kooshesh, F., *et al.* Prototypic G protein-coupled receptor for the intestinotrophic factor glucagon-like peptide 2. *Proc. Natl. Acad. Sci. U.S.A.* **96**(4), (1999).
2. Tang-Christensen, M., Larsen, P.J., Thulesen, J., *et al.* The proglucagon-derived peptide, glucagon-like peptide-2, is a neurotransmitter involved in the regulation of food intake. *Nat. Med.* **6**(7), 802-807 (2000).
3. Drucker, D.J., Erlich, P., Asa, S.L., *et al.* Induction of intestinal epithelial proliferation by glucagon-like peptide 2. *Proc. Natl. Acad. Sci. U.S.A.* **93**(15), 7911-7916 (1996).
4. Sato, S., Hokari, R., Kurihara, C., *et al.* Dietary lipids and sweeteners regulate glucagon-like peptide-2 secretion. *Am. J. Physiol. Gastrointest. Liver Physiol.* **304**(8), 304-308 (2013).

WARNING

THIS PRODUCT IS FOR RESEARCH ONLY - NOT FOR HUMAN OR VETERINARY DIAGNOSTIC OR THERAPEUTIC USE.

SAFETY DATA

This material should be considered hazardous until further information becomes available. Do not ingest, inhale, get in eyes, on skin, or on clothing. Wash thoroughly after handling. Before use, the user must review the complete Safety Data Sheet, which has been sent via email to your institution.

WARRANTY AND LIMITATION OF REMEDY

Buyer agrees to purchase the material subject to Cayman's Terms and Conditions. Complete Terms and Conditions including Warranty and Limitation of Liability information can be found on our website.

Copyright Cayman Chemical Company, 04/05/2018

CAYMAN CHEMICAL

1180 EAST ELLSWORTH RD
ANN ARBOR, MI 48108 · USA

PHONE: [800] 364-9897

[734] 971-3335

FAX: [734] 971-3640

CUSTSERV@CAYMANCHEM.COM

WWW.CAYMANCHEM.COM