



# SZABO SCANDIC

Part of Europa Biosite

## Produktinformation



Forschungsprodukte & Biochemikalien



Zellkultur & Verbrauchsmaterial



Diagnostik & molekulare Diagnostik



Laborgeräte & Service

Weitere Information auf den folgenden Seiten!  
See the following pages for more information!



### Lieferung & Zahlungsart

siehe unsere [Liefer- und Versandbedingungen](#)

### Zuschläge

- Mindermengenzuschlag
- Trockeneiszuschlag
- Gefahrgutzuschlag
- Expressversand

### SZABO-SCANDIC HandelsgmbH

Quellenstraße 110, A-1100 Wien

T. +43(0)1 489 3961-0

F. +43(0)1 489 3961-7

[mail@szabo-scandic.com](mailto:mail@szabo-scandic.com)

[www.szabo-scandic.com](http://www.szabo-scandic.com)

[linkedin.com/company/szaboscandic](https://www.linkedin.com/company/szaboscandic) 

# PRODUCT INFORMATION



## C6 Biotin 3'-sulfo Galactosylceramide (d18:1/6:0)

Item No. 24858

**Formal Name:** (2R,3R,4S,5S,6R)-3,5-dihydroxy-2-(((2S,3R,E)-3-hydroxy-2-(6-(5-((3aS,4S,6aR)-2-oxohexahydro-1H-thieno[3,4-d]imidazol-4-yl)pentanamido)hexanamido)octadec-4-en-1-yl)oxy)-6-(hydroxymethyl)tetrahydro-2H-pyran-4-yl hydrogen sulfate

**Synonyms:** Biotin 3'-sulfo Galactosylceramide (d18:1/6:0), Biotin (3'-sulfo)Galβ-Cer(d18:1/6:0), C6 Biotin Sulfatide, N-hexanoyl Biotin Sulfatide

**MF:** C<sub>40</sub>H<sub>72</sub>N<sub>4</sub>O<sub>13</sub>S<sub>2</sub>

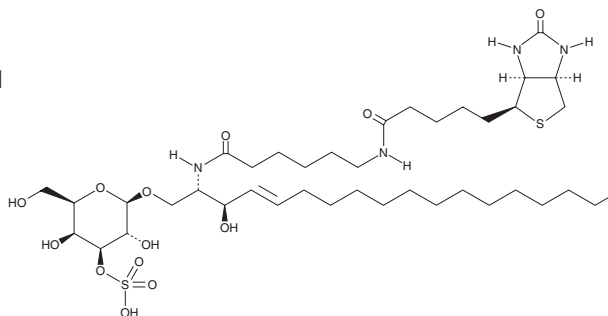
**FW:** 881.2

**Purity:** ≥98%

**Supplied as:** A solid

**Storage:** -20°C

**Stability:** ≥2 years



Information represents the product specifications. Batch specific analytical results are provided on each certificate of analysis.

### Laboratory Procedures

C6 Biotin 3'-sulfo galactosylceramide (d18:1/6:0) is supplied as a solid. A stock solution may be made by dissolving the C6 biotin 3'-sulfo galactosylceramide (d18:1/6:0) in the solvent of choice. C6 Biotin 3'-sulfo galactosylceramide (d18:1/6:0) is soluble in dimethyl formamide, a 2:1:0.1 solution of chloroform:methanol:water, and a 9:1 solution of methanol:water.

### Description

C6 Biotin 3'-sulfo galactosylceramide is an affinity probe that allows C6 3'-sulfo galactosylceramide to be detected or immobilized through interaction with the biotin ligand.

#### WARNING

THIS PRODUCT IS FOR RESEARCH ONLY - NOT FOR HUMAN OR VETERINARY DIAGNOSTIC OR THERAPEUTIC USE.

#### SAFETY DATA

This material should be considered hazardous until further information becomes available. Do not ingest, inhale, get in eyes, on skin, or on clothing. Wash thoroughly after handling. Before use, the user must review the complete Safety Data Sheet, which has been sent via email to your institution.

#### WARRANTY AND LIMITATION OF REMEDY

Buyer agrees to purchase the material subject to Cayman's Terms and Conditions. Complete Terms and Conditions including Warranty and Limitation of Liability information can be found on our website.

Copyright Cayman Chemical Company, 06/07/2018

#### CAYMAN CHEMICAL

1180 EAST ELLSWORTH RD

ANN ARBOR, MI 48108 · USA

**PHONE:** [800] 364-9897

[734] 971-3335

**FAX:** [734] 971-3640

CUSTSERV@CAYMANCHEM.COM

WWW.CAYMANCHEM.COM