



SZABO SCANDIC

Part of Europa Biosite

Produktinformation



Forschungsprodukte & Biochemikalien



Zellkultur & Verbrauchsmaterial



Diagnostik & molekulare Diagnostik



Laborgeräte & Service

Weitere Information auf den folgenden Seiten!
See the following pages for more information!



Lieferung & Zahlungsart

siehe unsere [Liefer- und Versandbedingungen](#)

Zuschläge

- Mindermengenzuschlag
- Trockeneiszuschlag
- Gefahrgutzuschlag
- Expressversand

SZABO-SCANDIC HandelsgmbH

Quellenstraße 110, A-1100 Wien

T. +43(0)1 489 3961-0

F. +43(0)1 489 3961-7

mail@szabo-scandic.com

www.szabo-scandic.com

[linkedin.com/company/szaboscandic](https://www.linkedin.com/company/szaboscandic) 

PRODUCT INFORMATION



C18:1 3'-sulfo Galactosylceramide (d18:1/18:1(9Z))

Item No. 24864

CAS Registry No.: 1292769-40-4
Formal Name: N-[(1S,2R,3E)-2-hydroxy-1-[[[3-O-sulfo-β-D-galactopyranosyl]oxy]methyl]-3-heptadecen-1-yl]-9Z-octadecenamide

Synonyms: (3'-sulfo)Galβ-Cer(d18:1/18:1(9Z)), N-Octadecenoyl-(cis-9) Sulfatide

MF: C₄₂H₇₉NO₁₁S

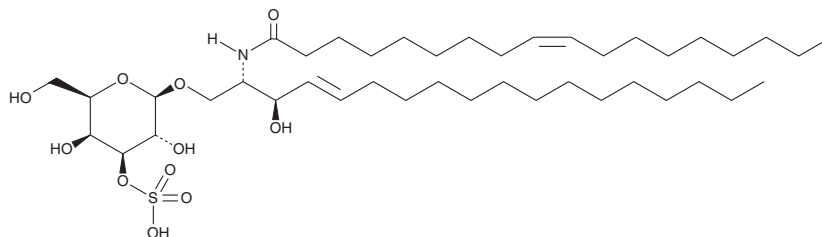
FW: 806.1

Purity: ≥98%

Supplied as: A solid

Storage: -20°C

Stability: ≥2 years



Information represents the product specifications. Batch specific analytical results are provided on each certificate of analysis.

Laboratory Procedures

C18:1 3'-sulfo Galactosylceramide (d18:1/18:1(9Z)) is supplied as a solid. A stock solution may be made by dissolving the C18:1 3'-sulfo galactosylceramide (d18:1/18:1(9Z)) in the solvent of choice. C18:1 3'-sulfo Galactosylceramide (d18:1/18:1(9Z)) is soluble in a 5:1 solution of chloroform:methanol.

Description

C18:1 3'-sulfo Galactosylceramide is a member of the sulfatide class of glycolipids. It has been found in mouse brain.¹ It has been used as a standard for the quantification of C18:1 3'-sulfo galactosylceramide in dried blood spots from patients with metachromatic leukodystrophy (MLD) by UPLC-MS.²

References

1. Colsch, B., Afonso, C., Popa, I., *et al.* Characterization of the ceramide moieties of sphingoglycolipids from mouse brain by ESI-MS/MS: Identification of ceramides containing sphingadienine. *J. Lipid Res.* **45**(2), 281-286 (2004).
2. Han, M., Jun, S.H., Song, S.H., *et al.* Ultra-performance liquid chromatography/tandem mass spectrometry for determination of sulfatides in dried blood spots from patients with metachromatic leukodystrophy. *Rapid Commun Mass Spectrom.* **28**(6), 587-594 (2014).

WARNING

THIS PRODUCT IS FOR RESEARCH ONLY - NOT FOR HUMAN OR VETERINARY DIAGNOSTIC OR THERAPEUTIC USE.

SAFETY DATA

This material should be considered hazardous until further information becomes available. Do not ingest, inhale, get in eyes, on skin, or on clothing. Wash thoroughly after handling. Before use, the user must review the complete Safety Data Sheet, which has been sent via email to your institution.

WARRANTY AND LIMITATION OF REMEDY

Buyer agrees to purchase the material subject to Cayman's Terms and Conditions. Complete Terms and Conditions including Warranty and Limitation of Liability information can be found on our website.

Copyright Cayman Chemical Company, 05/10/2018

CAYMAN CHEMICAL

1180 EAST ELLSWORTH RD
ANN ARBOR, MI 48108 · USA

PHONE: [800] 364-9897
[734] 971-3335

FAX: [734] 971-3640

CUSTSERV@CAYMANCHEM.COM
WWW.CAYMANCHEM.COM