



SZABO SCANDIC

Part of Europa Biosite

Produktinformation



Forschungsprodukte & Biochemikalien



Zellkultur & Verbrauchsmaterial



Diagnostik & molekulare Diagnostik



Laborgeräte & Service

Weitere Information auf den folgenden Seiten!
See the following pages for more information!



Lieferung & Zahlungsart

siehe unsere [Liefer- und Versandbedingungen](#)

Zuschläge

- Mindermengenzuschlag
- Trockeneiszuschlag
- Gefahrgutzuschlag
- Expressversand

SZABO-SCANDIC HandelsgmbH

Quellenstraße 110, A-1100 Wien

T. +43(0)1 489 3961-0

F. +43(0)1 489 3961-7

mail@szabo-scandic.com

www.szabo-scandic.com

[linkedin.com/company/szaboscandic](https://www.linkedin.com/company/szaboscandic) 

PRODUCT INFORMATION



Amylin (1-13) (human, mouse, rat), (trifluoroacetate salt)

Item No. 24893

Formal Name: L-lysyl-L-cysteinyl-L-asparaginyl-L-threonyl-L-alanyl-L-threonyl-L-cysteinyl-L-alanyl-L-threonyl-L-glutaminy-L-arginyl-L-leucyl-L-alanine, cyclic (2→7)-disulfide, trifluoroacetate salt

Synonyms: IAPP (1-13) (human, mouse rat), Islet Amyloid Polypeptide (1-13) (human, mouse, rat)

MF: C₅₄H₉₅N₁₉O₁₉S₂ • XCF₃COOH

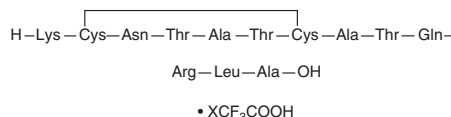
FW: 1,378.6

Purity: ≥95%

Supplied as: A lyophilized powder

Storage: -20°C

Stability: ≥4 years



Information represents the product specifications. Batch specific analytical results are provided on each certificate of analysis.

Laboratory Procedures

Amylin (1-13) (human, mouse, rat) (trifluoroacetate salt) is supplied as a lyophilized powder. A stock solution may be made by dissolving the amylin (1-13) (human, mouse, rat) (trifluoroacetate salt) in water. The solubility of amylin (1-13) (human, mouse, rat) (trifluoroacetate salt) in water is approximately 1 mg/ml. We do not recommend storing the aqueous solution for more than one day.

Description

Amylin (1-13) is a peptide fragment of amylin (Item Nos. 24274 | 24275), which is a peptide hormone secreted from pancreatic β-cells that reduces food intake, decreases glucagon secretion, slows gastric emptying, and increases satiety.¹⁻⁴

References

1. Lutz, T.A. Control of food intake and energy expenditure by amylin - therapeutic implications. *Int. J. Obes.* **33(Suppl. 1)**, S24-S27 (2009).
2. Mack, C.M., Soares, C.J., Wilson, J.K., *et al.* Davalintide (AC2307), a novel amylin-mimetic peptide: Enhanced pharmacological properties over native amylin to reduce food intake and body weight. *Int. J. Obes. (Lond)* **34(2)**, 385-395 (2010).
3. Gómez-Foix, A.M., Rodriguez-Gil, J.E., and Guinovart, J.J. Anti-insulin effects of amylin and calcitonin-gene-related peptide on hepatic glycogen metabolism. *Biochem. J.* **276(Pt 3)**, 607-610 (1991).
4. Vine, W., Beaumont, K., Gedulin, B., *et al.* Comparison of the in vitro and in vivo pharmacology of adrenomedullin, calcitonin gene-related peptide and amylin in rats. *Eur. J. Pharmacol.* **314(1-2)**, 115-121 (1996).

WARNING

THIS PRODUCT IS FOR RESEARCH ONLY - NOT FOR HUMAN OR VETERINARY DIAGNOSTIC OR THERAPEUTIC USE.

SAFETY DATA

This material should be considered hazardous until further information becomes available. Do not ingest, inhale, get in eyes, on skin, or on clothing. Wash thoroughly after handling. Before use, the user must review the complete Safety Data Sheet, which has been sent via email to your institution.

WARRANTY AND LIMITATION OF REMEDY

Buyer agrees to purchase the material subject to Cayman's Terms and Conditions. Complete Terms and Conditions including Warranty and Limitation of Liability information can be found on our website.

Copyright Cayman Chemical Company, 11/18/2022

CAYMAN CHEMICAL

1180 EAST ELLSWORTH RD
ANN ARBOR, MI 48108 · USA

PHONE: [800] 364-9897

[734] 971-3335

FAX: [734] 971-3640

CUSTSERV@CAYMANCHEM.COM

WWW.CAYMANCHEM.COM