



SZABO SCANDIC

Part of Europa Biosite

Produktinformation



Forschungsprodukte & Biochemikalien



Zellkultur & Verbrauchsmaterial



Diagnostik & molekulare Diagnostik



Laborgeräte & Service

Weitere Information auf den folgenden Seiten!
See the following pages for more information!



Lieferung & Zahlungsart

siehe unsere [Liefer- und Versandbedingungen](#)

Zuschläge

- Mindermengenzuschlag
- Trockeneiszuschlag
- Gefahrgutzuschlag
- Expressversand

SZABO-SCANDIC HandelsgmbH

Quellenstraße 110, A-1100 Wien

T. +43(0)1 489 3961-0

F. +43(0)1 489 3961-7

mail@szabo-scandic.com

www.szabo-scandic.com

[linkedin.com/company/szaboscandic](https://www.linkedin.com/company/szaboscandic) 

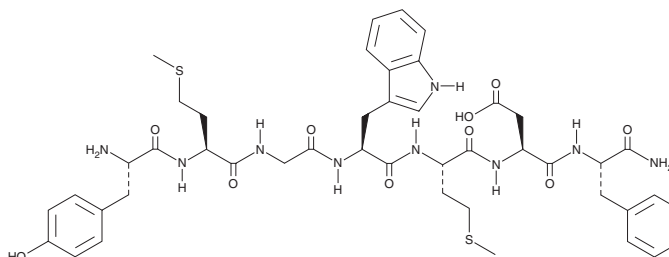
PRODUCT INFORMATION



CCK (27-33) (non-sulfated)

Item No. 24952

CAS Registry No.: 47910-79-2
Formal Name: L-tyrosyl-L-methionylglycyl-L-tryptophyl-L-methionyl-L- α -aspartyl-L-phenylalaninamide
Synonym: Cholecystokinin (27-33) (non-sulfated)
MF: C₄₅H₅₇N₉O₁₀S₂
FW: 948.1
Purity: \geq 95%
Supplied as: A lyophilized powder
Storage: -20°C
Stability: \geq 2 years



Information represents the product specifications. Batch specific analytical results are provided on each certificate of analysis.

Laboratory Procedures

CCK (27-33) (non-sulfated) is supplied as a lyophilized powder. A stock solution may be made by dissolving the CCK (27-33) (non-sulfated) in the solvent of choice. CCK (27-33) (non-sulfated) is soluble in the organic solvent formic acid, which should be purged with an inert gas, at a concentration of approximately 1 mg/ml.

Description

CCK (27-33) is a C-terminal fragment of CCK (Item Nos. 23371 | 24404), a peptide hormone found in the intestine and brain that stimulates digestion, mediates satiety, and is involved in anxiety.^{1,2} Non-sulfated CCK (27-33) inhibits binding of [³H]naloxone in rat cerebellum membranes (IC₅₀ = 4 μ M) and inhibits electrically-stimulated contraction of isolated guinea pig ileum (IC₅₀ = 17 μ M), an effect that can be reversed by naloxone.³ Unlike sulfated CCK (27-33), the non-sulfated form does not reduce exploratory behavior in mice when administered at doses up to 1 μ mol/kg.⁴

References

1. Raybould, H.E., and Lloyd, K.C.K. Integration of postprandial function in the proximal gastrointestinal tract. Role of CCK and sensory pathways. *Ann. N.Y. Acad. Sci.* **713**(1), 143-156 (1994).
2. Ondetti, M.A., Plušćec, J., Sabo, E.F., *et al.* Synthesis of cholecystokinin-pancreozymin. I. The C-terminal dodecapeptide. *J. Am. Chem. Soc.* **92**(1), 195-199 (1970).
3. Schiller, P.W., Lipton, A., Horrobin, D.F., *et al.* Unsulfated C-terminal 7-peptide of cholecystokinin: A new ligand of the opiate receptor. *Biochem. Biophys. Res. Commun.* **85**(4), 1332-1338 (1978).
4. Crawley, J.N., St-Pierre, S., and Gaudreau, P. Analysis of the behavioral activity of C- and N-terminal fragments of cholecystokinin octapeptide. *J. Pharmacol. Exp. Ther.* **230**(2), 438-444 (1984).

WARNING

THIS PRODUCT IS FOR RESEARCH ONLY - NOT FOR HUMAN OR VETERINARY DIAGNOSTIC OR THERAPEUTIC USE.

SAFETY DATA

This material should be considered hazardous until further information becomes available. Do not ingest, inhale, get in eyes, on skin, or on clothing. Wash thoroughly after handling. Before use, the user must review the [complete](#) Safety Data Sheet, which has been sent via email to your institution.

WARRANTY AND LIMITATION OF REMEDY

Buyer agrees to purchase the material subject to Cayman's Terms and Conditions. Complete Terms and Conditions including Warranty and Limitation of Liability information can be found on our website.

Copyright Cayman Chemical Company, 03/30/2018

CAYMAN CHEMICAL

1180 EAST ELLSWORTH RD
ANN ARBOR, MI 48108 · USA

PHONE: [800] 364-9897

[734] 971-3335

FAX: [734] 971-3640

CUSTSERV@CAYMANCHEM.COM
WWW.CAYMANCHEM.COM