



SZABO SCANDIC

Part of Europa Biosite

Produktinformation



Forschungsprodukte & Biochemikalien



Zellkultur & Verbrauchsmaterial



Diagnostik & molekulare Diagnostik



Laborgeräte & Service

Weitere Information auf den folgenden Seiten!
See the following pages for more information!



Lieferung & Zahlungsart

siehe unsere [Liefer- und Versandbedingungen](#)

Zuschläge

- Mindermengenzuschlag
- Trockeneiszuschlag
- Gefahrgutzuschlag
- Expressversand

SZABO-SCANDIC HandelsgmbH

Quellenstraße 110, A-1100 Wien

T. +43(0)1 489 3961-0

F. +43(0)1 489 3961-7

mail@szabo-scandic.com

www.szabo-scandic.com

[linkedin.com/company/szaboscandic](https://www.linkedin.com/company/szaboscandic) 

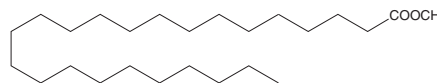
PRODUCT INFORMATION



Lignoceric Acid methyl ester

Item No. 26706

CAS Registry No.: 2442-49-1
Formal Name: tetracosanoic acid, methyl ester
Synonyms: C24:0 methyl ester, Methyl Lignocerate, Methyl Tetracosanoate
MF: C₂₅H₅₀O₂
FW: 382.7
Purity: ≥98%
Supplied as: A crystalline solid
Storage: -20°C
Stability: ≥2 years



Information represents the product specifications. Batch specific analytical results are provided on each certificate of analysis.

Laboratory Procedures

Lignoceric acid methyl ester is supplied as a crystalline solid. A stock solution may be made by dissolving the lignoceric acid methyl ester in the solvent of choice. Lignoceric acid methyl ester is soluble in organic solvents such as chloroform and tetrahydrofuran which should be purged with an inert gas. The solubility of lignoceric acid methyl ester in these solvents is approximately 2 and 5 mg/ml, respectively.

Description

Lignoceric acid methyl ester is an esterified form of lignoceric acid (Item No. 13353). It has been found in biodiesel produced from several types of animal fat.¹

Reference

1. Sander, A., Koščak, M.A., Kosir, D., *et al.* The influence of animal fat type and purification conditions on biodiesel quality. *Renewable Energy* **118**, 752-760 (2018).

WARNING
THIS PRODUCT IS FOR RESEARCH ONLY - NOT FOR HUMAN OR VETERINARY DIAGNOSTIC OR THERAPEUTIC USE.

SAFETY DATA
This material should be considered hazardous until further information becomes available. Do not ingest, inhale, get in eyes, on skin, or on clothing. Wash thoroughly after handling. Before use, the user must review the [complete](#) Safety Data Sheet, which has been sent via email to your institution.

WARRANTY AND LIMITATION OF REMEDY
Buyer agrees to purchase the material subject to Cayman's Terms and Conditions. Complete Terms and Conditions including Warranty and Limitation of Liability information can be found on our website.

Copyright Cayman Chemical Company, 05/31/2019

CAYMAN CHEMICAL

1180 EAST ELLSWORTH RD
ANN ARBOR, MI 48108 · USA

PHONE: [800] 364-9897
[734] 971-3335

FAX: [734] 971-3640

CUSTSERV@CAYMANCHEM.COM
WWW.CAYMANCHEM.COM