



# SZABO SCANDIC

Part of Europa Biosite

## Produktinformation



Forschungsprodukte & Biochemikalien



Zellkultur & Verbrauchsmaterial



Diagnostik & molekulare Diagnostik



Laborgeräte & Service

Weitere Information auf den folgenden Seiten!  
See the following pages for more information!



### Lieferung & Zahlungsart

siehe unsere [Liefer- und Versandbedingungen](#)

### Zuschläge

- Mindermengenzuschlag
- Trockeneiszuschlag
- Gefahrgutzuschlag
- Expressversand

### SZABO-SCANDIC HandelsgmbH

Quellenstraße 110, A-1100 Wien

T. +43(0)1 489 3961-0

F. +43(0)1 489 3961-7

[mail@szabo-scandic.com](mailto:mail@szabo-scandic.com)

[www.szabo-scandic.com](http://www.szabo-scandic.com)

[linkedin.com/company/szaboscandic](https://www.linkedin.com/company/szaboscandic) 

# PRODUCT INFORMATION



## C16 Ceramide (d18:1(14Z)/16:0)

Item No. 28601

**Formal Name:** N-((2S,3R,Z)-1,3-dihydroxyoctadec-14-en-2-yl)palmitamide

**Synonyms:** C16:0-Cer, Cer(d18:1(14Z)/16:0), Ceramide (d18:1(14Z)/16:0), N-palmitoyl-4,5-dihydro-14Z-Sphingosine

**MF:** C<sub>34</sub>H<sub>67</sub>NO<sub>3</sub>

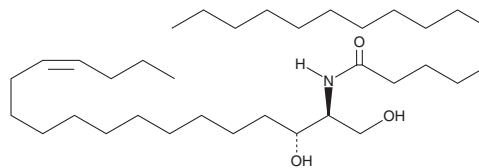
**FW:** 537.9

**Purity:** ≥95%

**Supplied as:** A crystalline solid

**Storage:** -20°C

**Stability:** ≥2 years



Information represents the product specifications. Batch specific analytical results are provided on each certificate of analysis.

### Laboratory Procedures

C16 Ceramide (d18:1(14Z)/16:0) is supplied as a crystalline solid. A stock solution may be made by dissolving the C16 ceramide (d18:1(14Z)/16:0) in the solvent of choice, which should be purged with an inert gas. C16 Ceramide (d18:1(14Z)/16:0) is soluble in the organic solvent dimethyl formamide at a concentration of approximately 0.5 mg/ml.

### Description

C16 Ceramide (d18:1(14Z)/16:0) is a long-chain atypical ceramide containing a sphingosine (d18:1(14Z)) (Item No. 27019) backbone with a *cis* double bond at the 14-15 position rather than a *trans* double bond at the 4-5 position.

#### WARNING

THIS PRODUCT IS FOR RESEARCH ONLY - NOT FOR HUMAN OR VETERINARY DIAGNOSTIC OR THERAPEUTIC USE.

#### SAFETY DATA

This material should be considered hazardous until further information becomes available. Do not ingest, inhale, get in eyes, on skin, or on clothing. Wash thoroughly after handling. Before use, the user must review the [complete](#) Safety Data Sheet, which has been sent via email to your institution.

#### WARRANTY AND LIMITATION OF REMEDY

Buyer agrees to purchase the material subject to Cayman's Terms and Conditions. Complete Terms and Conditions including Warranty and Limitation of Liability information can be found on our website.

Copyright Cayman Chemical Company, 01/02/2019

#### CAYMAN CHEMICAL

1180 EAST ELLSWORTH RD  
ANN ARBOR, MI 48108 · USA

**PHONE:** [800] 364-9897

[734] 971-3335

**FAX:** [734] 971-3640

CUSTSERV@CAYMANCHEM.COM  
WWW.CAYMANCHEM.COM