



# SZABO SCANDIC

Part of Europa Biosite

## Produktinformation



Forschungsprodukte & Biochemikalien



Zellkultur & Verbrauchsmaterial



Diagnostik & molekulare Diagnostik



Laborgeräte & Service

Weitere Information auf den folgenden Seiten!  
See the following pages for more information!



### Lieferung & Zahlungsart

siehe unsere [Liefer- und Versandbedingungen](#)

### Zuschläge

- Mindermengenzuschlag
- Trockeneiszuschlag
- Gefahrgutzuschlag
- Expressversand

### SZABO-SCANDIC HandelsgmbH

Quellenstraße 110, A-1100 Wien

T. +43(0)1 489 3961-0

F. +43(0)1 489 3961-7

[mail@szabo-scandic.com](mailto:mail@szabo-scandic.com)

[www.szabo-scandic.com](http://www.szabo-scandic.com)

[linkedin.com/company/szaboscandic](https://www.linkedin.com/company/szaboscandic) 

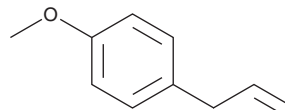
# PRODUCT INFORMATION



## Estragole

Item No. 29824

CAS Registry No.: 140-67-0  
Formal Name: 1-methoxy-4-(2-propen-1-yl)-benzene  
Synonyms: 4-Allylanisole, Methyl Chavicol, NSC 404113  
MF: C<sub>10</sub>H<sub>12</sub>O  
FW: 148.2  
Purity: ≥98%  
UV/Vis.: λ<sub>max</sub>: 226, 278, 285 nm  
Supplied as: A liquid  
Storage: -20°C  
Stability: ≥2 years  
Item Origin: Synthetic



Information represents the product specifications. Batch specific analytical results are provided on each certificate of analysis.

### Laboratory Procedures

Estragole is supplied as a liquid. A stock solution may be made by dissolving the estragole in the solvent of choice, which should be purged with an inert gas. Estragole is soluble in the organic solvent dimethyl formamide at a concentration of approximately 10 mg/ml. Estragole is also slightly soluble in ethanol.

### Description

Estragole is a volatile compound that has been found in basil oil and has diverse biological activities.<sup>1-4</sup> It induces mortality in 100% of adult *C. capitata*, *B. dorsalis*, and *B. cucurbitae* fruit flies exposed to wicks impregnated with estragole at concentrations greater than or equal to 2.5%.<sup>1</sup> Estragole (60 mg/kg) reduces carrageenan-induced paw edema in mice.<sup>2</sup> It increases survival in a mouse model of infection with the ME49 strain of *T. gondii* when administered at a dose of 100 mg/kg per day.<sup>3</sup> Estragole (2.5 μmol/g, p.o., twice per week) increases the percentage of hepatoma-bearing mice and the average number of hepatomas per mouse in male, but not female, mice when administered prior to weaning.<sup>4</sup>

### References

1. Chang, C.L., Cho, I.K., and Li, Q.X. Insecticidal activity of basil oil, *trans*-anethole, estragole, and linalool to adult fruit flies of *Ceratitidis capitata*, *Bactrocera dorsalis*, and *Bactrocera cucurbitae*. *J. Econ. Entomol.* **102**(1), 203-209 (2009).
2. Rodrigues, L.B., Oliveira Brito Pereira Bezerra Martins, A., Cesário, F.R., *et al.* Anti-inflammatory and antiedematogenic activity of the *Ocimum basilicum* essential oil and its main compound estragole: In vivo mouse models. *Chem. Biol. Interact.* **257**, 14-25 (2016).
3. Oliveira, C.B., Meurer, Y.S., Medeiros, T.L., *et al.* Anti-toxoplasma activity of estragole and thymol in murine models of congenital and noncongenital toxoplasmosis. *J. Parasitol.* **102**(3), 369-376 (2016).
4. Miller, E.C., Swanson, A.B., Phillips, D.H., *et al.* Structure-activity studies of the carcinogenicities in the mouse and rat of some naturally occurring and synthetic alkenylbenzene derivatives related to safrole and estragole. *Cancer Res.* **43**(3), 1124-1134 (1983).

#### WARNING

THIS PRODUCT IS FOR RESEARCH ONLY - NOT FOR HUMAN OR VETERINARY DIAGNOSTIC OR THERAPEUTIC USE.

#### SAFETY DATA

This material should be considered hazardous until further information becomes available. Do not ingest, inhale, get in eyes, on skin, or on clothing. Wash thoroughly after handling. Before use, the user must review the complete Safety Data Sheet, which has been sent via email to your institution.

#### WARRANTY AND LIMITATION OF REMEDY

Buyer agrees to purchase the material subject to Cayman's Terms and Conditions. Complete Terms and Conditions including Warranty and Limitation of Liability information can be found on our website.

Copyright Cayman Chemical Company, 04/21/2020

#### CAYMAN CHEMICAL

1180 EAST ELLSWORTH RD  
ANN ARBOR, MI 48108 · USA

PHONE: [800] 364-9897  
[734] 971-3335

FAX: [734] 971-3640

CUSTSERV@CAYMANCHEM.COM  
WWW.CAYMANCHEM.COM