



SZABO SCANDIC

Part of Europa Biosite

Produktinformation



Forschungsprodukte & Biochemikalien



Zellkultur & Verbrauchsmaterial



Diagnostik & molekulare Diagnostik



Laborgeräte & Service

Weitere Information auf den folgenden Seiten!
See the following pages for more information!



Lieferung & Zahlungsart

siehe unsere [Liefer- und Versandbedingungen](#)

Zuschläge

- Mindermengenzuschlag
- Trockeneiszuschlag
- Gefahrgutzuschlag
- Expressversand

SZABO-SCANDIC HandelsgmbH

Quellenstraße 110, A-1100 Wien

T. +43(0)1 489 3961-0

F. +43(0)1 489 3961-7

mail@szabo-scandic.com

www.szabo-scandic.com

[linkedin.com/company/szaboscandic](https://www.linkedin.com/company/szaboscandic) 

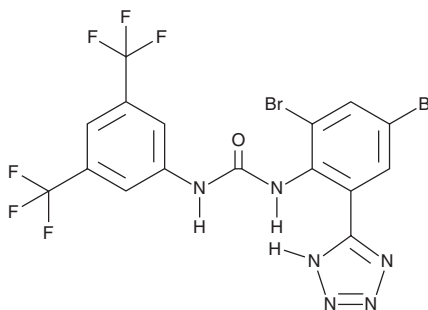
PRODUCT INFORMATION



NS 5806

Item No. 33226

CAS Registry No.: 426834-69-7
Formal Name: N-[3,5-bis(trifluoromethyl)phenyl]-
N'-[2,4-dibromo-6-(2H-tetrazol-5-yl)
phenyl]-urea
MF: C₁₆H₈Br₂F₆N₆O
FW: 574.1
Purity: ≥98%
UV/Vis.: λ_{max}: 245 nm
Supplied as: A crystalline solid
Storage: -20°C
Stability: ≥2 years



Information represents the product specifications. Batch specific analytical results are provided on each certificate of analysis.

Laboratory Procedures

NS 5806 is supplied as a crystalline solid. A stock solution may be made by dissolving the NS 5806 in the solvent of choice, which should be purged with an inert gas. NS 5806 is soluble in organic solvents such as ethanol and DMSO. The solubility of NS 5806 in these solvents is approximately 25 and 50 mg/ml, respectively.

Description

NS 5806 is an activator of the calcium-independent transient outward potassium current (I_{to}).¹ It increases $K_v4.3$ -mediated I_{to} current amplitudes ($EC_{50} = 5.3 \mu M$), as well as slows I_{to} current decay in a manner dependent on potassium channel interaction protein 2 (KChIP2), in CHO-K1 cells expressing human $K_v4.3$. NS 5806 increases I_{to} currents in isolated rabbit ventricular myocytes ($EC_{50} = 1.6 \mu M$).² It reverses rapid pacing-induced decreases in I_{to} current recovery and restores the spike-and-dome morphology of the epicardial action potential in ventricular wedge preparations isolated from a dog heart in a model of heart failure.³

References

1. Lundby, A., Jespersen, T., Schmitt, N., *et al.* Effect of the I_{to} activator NS5806 on cloned K_v4 channels depends on the accessory protein KChIP2. *Br. J. Pharmacol.* **160(8)**, 2028-2044 (2010).
2. Cheng, H., Cannell, M.B., and Hancox, J.C. Differential responses of rabbit ventricular and atrial transient outward current I_{to} to the I_{to} modulator NS5806. *Physiol. Rep.* **5(5)**, e13172 (2017).
3. Cordeiro, J.M., Calloe, K., Moise, N.S., *et al.* Physiological consequences of transient outward K^+ current activation during heart failure in the canine left ventricle. *J. Mol. Cell. Cardiol.* **52(6)**, 1291-1298 (2012).

WARNING

THIS PRODUCT IS FOR RESEARCH ONLY - NOT FOR HUMAN OR VETERINARY DIAGNOSTIC OR THERAPEUTIC USE.

SAFETY DATA

This material should be considered hazardous until further information becomes available. Do not ingest, inhale, get in eyes, on skin, or on clothing. Wash thoroughly after handling. Before use, the user must review the complete Safety Data Sheet, which has been sent via email to your institution.

WARRANTY AND LIMITATION OF REMEDY

Buyer agrees to purchase the material subject to Cayman's Terms and Conditions. Complete Terms and Conditions including Warranty and Limitation of Liability information can be found on our website.

Copyright Cayman Chemical Company, 02/09/2021

CAYMAN CHEMICAL

1180 EAST ELLSWORTH RD
ANN ARBOR, MI 48108 · USA

PHONE: [800] 364-9897
[734] 971-3335

FAX: [734] 971-3640

CUSTSERV@CAYMANCHEM.COM
WWW.CAYMANCHEM.COM