



# SZABO SCANDIC

Part of Europa Biosite

## Produktinformation



Forschungsprodukte & Biochemikalien



Zellkultur & Verbrauchsmaterial



Diagnostik & molekulare Diagnostik



Laborgeräte & Service

Weitere Information auf den folgenden Seiten!  
See the following pages for more information!



### Lieferung & Zahlungsart

siehe unsere [Liefer- und Versandbedingungen](#)

### Zuschläge

- Mindermengenzuschlag
- Trockeneiszuschlag
- Gefahrgutzuschlag
- Expressversand

### SZABO-SCANDIC HandelsgmbH

Quellenstraße 110, A-1100 Wien

T. +43(0)1 489 3961-0

F. +43(0)1 489 3961-7

[mail@szabo-scandic.com](mailto:mail@szabo-scandic.com)

[www.szabo-scandic.com](http://www.szabo-scandic.com)

[linkedin.com/company/szaboscandic](https://www.linkedin.com/company/szaboscandic) 

# PRODUCT INFORMATION



## GLS1 (human, recombinant)

Item No. 33737

### Overview and Properties

**Synonyms:** GAC, GAM, GLS, K-glutaminase, Glutaminase Kidney Isoform Mitochondrial, Glutaminase Transcript Variant 1, KGA, L-glutamine Amidohydrolase  
**Source:** Active recombinant human N-terminal His-tagged GLS1 expressed in *E. coli*  
**Amino Acids:** 17-699  
**Uniprot No.:** O94925  
**Molecular Weight:** 73 kDa  
**Storage:** -80°C (as supplied)  
**Stability:** ≥6 months  
**Purity:** ≥80% estimated by SDS-PAGE  
**Supplied in:** 40 mM Tris-HCl, pH 8.0, with 110 mM sodium chloride, 2.2 mM potassium chloride, 0.04% Tween 20, and 20% glycerol

### Protein

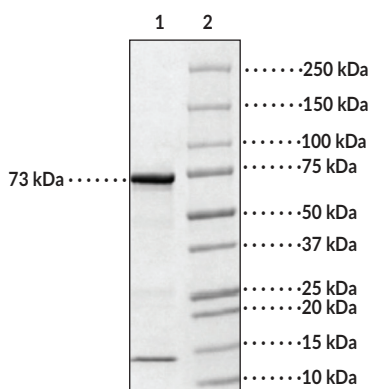
**Concentration:** *batch specific* mg/ml

**Activity:** *batch specific* U/ml

**Specific Activity:** *batch specific* U/mg

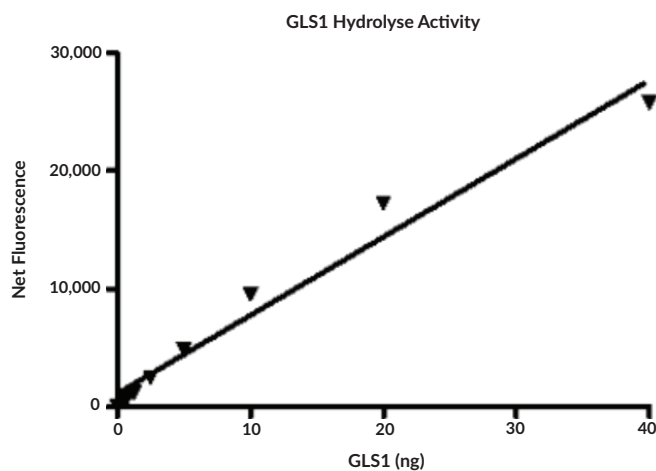
Information represents the product specifications. Batch specific analytical results are provided on each certificate of analysis.

### Images



Lane 1: GLS1 (2 µg)  
Lane 2: MW Markers

SDS-PAGE Analysis of GLS1.



WARNING  
THIS PRODUCT IS FOR RESEARCH ONLY - NOT FOR HUMAN OR VETERINARY DIAGNOSTIC OR THERAPEUTIC USE.

SAFETY DATA  
This material should be considered hazardous until further information becomes available. Do not ingest, inhale, get in eyes, on skin, or on clothing. Wash thoroughly after handling. Before use, the user must review the complete Safety Data Sheet, which has been sent via email to your institution.

WARRANTY AND LIMITATION OF REMEDY  
Buyer agrees to purchase the material subject to Cayman's Terms and Conditions. Complete Terms and Conditions including Warranty and Limitation of Liability information can be found on our website.

Copyright Cayman Chemical Company, 11/08/2021

CAYMAN CHEMICAL  
1180 EAST ELLSWORTH RD  
ANN ARBOR, MI 48108 · USA  
PHONE: [800] 364-9897  
[734] 971-3335  
FAX: [734] 971-3640  
CUSTSERV@CAYMANCHEM.COM  
WWW.CAYMANCHEM.COM

# PRODUCT INFORMATION



## Description

---

Glutaminase 1 (GLS1) is a mitochondrial enzyme that catalyzes the catabolism of glutamine to glutamate and ammonia.<sup>1,2</sup> Alternative transcription of *GLS*, the gene encoding GLS1, produces two isozymes: kidney (K-type) glutaminase (KGA) and glutaminase C (GAC), which are expressed in kidney, brain, intestine, and fetal liver tissues.<sup>1</sup> *GLS* expression is increased in multiple cancer types, including colorectal, prostate, and breast, and is associated with poor prognosis in ovarian, breast, gastric, and head and neck cancers.<sup>3</sup> GLS1 is also essential to T helper 17 (Th17) cell differentiation, and pharmacologic inhibition of GLS1 ameliorates disease symptoms in mouse models of lupus, experimental autoimmune encephalomyelitis, and psoriasis.<sup>4,5</sup> Cayman's GLS1 (human, recombinant) protein can be used for enzyme activity assays.

## References

---

1. Curthoys, N.P. and Watford, M. Regulation of glutaminase activity and glutamine metabolism. *Annu. Rev. Nutr.* **15**, 133-159 (1995).
2. Matés, J.M., Segura, J.A., Martín-Rufián, M., *et al.* Glutaminase isoenzymes as key regulators in metabolic and oxidative stress against cancer. *Curr. Mol. Med.* **13**(4), 514-534 (2013).
3. Yu, W., Yang, X., Zhang, Q., *et al.* Targeting GLS1 to cancer therapy through glutamine metabolism. *Clin. Transl. Oncol.* **23**(11), 2253-2268 (2021).
4. Kono, M., Yoshida, N., Maeda, K., *et al.* Glutaminase 1 inhibition reduces glycolysis and ameliorates lupus-like disease in MRL/lpr mice and experimental autoimmune encephalomyelitis. *Arthritis Rheumatol.* **71**(11), 1869-1878 (2019).
5. Xia, X., Cao, G., Sun, G., *et al.* GLS1-mediated glutaminolysis unbridled by MALT1 protease promotes psoriasis pathogenesis. *J. Clin. Invest.* **130**(10), 5180-5196 (2020).

CAYMAN CHEMICAL  
1180 EAST ELLSWORTH RD  
ANN ARBOR, MI 48108 · USA  
PHONE: [800] 364-9897  
[734] 971-3335  
FAX: [734] 971-3640  
CUSTSERV@CAYMANCHEM.COM  
WWW.CAYMANCHEM.COM