



SZABO SCANDIC

Part of Europa Biosite

Produktinformation



Forschungsprodukte & Biochemikalien



Zellkultur & Verbrauchsmaterial



Diagnostik & molekulare Diagnostik



Laborgeräte & Service

Weitere Information auf den folgenden Seiten!
See the following pages for more information!



Lieferung & Zahlungsart

siehe unsere [Liefer- und Versandbedingungen](#)

Zuschläge

- Mindermengenzuschlag
- Trockeneiszuschlag
- Gefahrgutzuschlag
- Expressversand

SZABO-SCANDIC HandelsgmbH

Quellenstraße 110, A-1100 Wien

T. +43(0)1 489 3961-0

F. +43(0)1 489 3961-7

mail@szabo-scandic.com

www.szabo-scandic.com

[linkedin.com/company/szaboscandic](https://www.linkedin.com/company/szaboscandic) 

PRODUCT INFORMATION

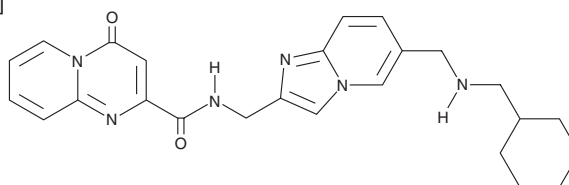


STM2457

Item No. 34280

CAS Registry No.: 2499663-01-1
Formal Name: N-[[6-[[[(cyclohexylmethyl)amino]methyl]imidazo[1,2-a]pyridin-2-yl]methyl]-4-oxo-4H-pyrido[1,2-a]pyrimidine-2-carboxamide

MF: C₂₅H₂₈N₆O₂
FW: 444.5
Purity: ≥98%
UV/Vis.: λ_{max}: 225 nm
Supplied as: A solid
Storage: -20°C
Stability: ≥4 years



Information represents the product specifications. Batch specific analytical results are provided on each certificate of analysis.

Laboratory Procedures

STM2457 is supplied as a solid. A stock solution may be made by dissolving the STM2457 in the solvent of choice, which should be purged with an inert gas. STM2457 is slightly soluble in ethanol, DMSO, and dimethyl formamide.

Description

STM2457 is an inhibitor of the methyltransferase-like 3 (METTL3) and METTL14 complex (IC₅₀ = 16.9 μM).¹ It inhibits growth in a panel of acute myeloid leukemia (AML) cell lines (IC₅₀s = 0.6-10.3 μM). STM2457 also inhibits the proliferation, migration, and invasion of HuCC-T1 and HCCC-9810 intrahepatic cholangiocarcinoma (ICC) cells in a concentration-dependent manner.² It increases survival in a patient-derived xenograft (PDX) mouse model of AML when administered at a dose of 50 mg/kg.¹

References

1. Yankova, E., Blackaby, W., Albertella, M., *et al.* Small molecule inhibition of METTL3 as a strategy against myeloid leukaemia. *Nature* **593(7860)**, 597-601 (2021).
2. Xu, Q.-C., Tien, Y.-C., Shi, Y.-H., *et al.* METTL3 promotes intrahepatic cholangiocarcinoma progression by regulating IFIT2 expression in an m⁶A-YTHDF2-dependent manner. *Oncogene* **41(11)**, 1622-1633 (2022).

WARNING

THIS PRODUCT IS FOR RESEARCH ONLY - NOT FOR HUMAN OR VETERINARY DIAGNOSTIC OR THERAPEUTIC USE.

SAFETY DATA

This material should be considered hazardous until further information becomes available. Do not ingest, inhale, get in eyes, on skin, or on clothing. Wash thoroughly after handling. Before use, the user must review the [complete](#) Safety Data Sheet, which has been sent via email to your institution.

WARRANTY AND LIMITATION OF REMEDY

Buyer agrees to purchase the material subject to Cayman's Terms and Conditions. Complete Terms and Conditions including Warranty and Limitation of Liability information can be found on our website.

Copyright Cayman Chemical Company, 09/29/2022

CAYMAN CHEMICAL

1180 EAST ELLSWORTH RD
ANN ARBOR, MI 48108 · USA

PHONE: [800] 364-9897
[734] 971-3335

FAX: [734] 971-3640

CUSTSERV@CAYMANCHEM.COM
WWW.CAYMANCHEM.COM