



# SZABO SCANDIC

Part of Europa Biosite

## Produktinformation



Forschungsprodukte & Biochemikalien



Zellkultur & Verbrauchsmaterial



Diagnostik & molekulare Diagnostik



Laborgeräte & Service

Weitere Information auf den folgenden Seiten!  
See the following pages for more information!



### Lieferung & Zahlungsart

siehe unsere [Liefer- und Versandbedingungen](#)

### Zuschläge

- Mindermengenzuschlag
- Trockeneiszuschlag
- Gefahrgutzuschlag
- Expressversand

### SZABO-SCANDIC HandelsgmbH

Quellenstraße 110, A-1100 Wien

T. +43(0)1 489 3961-0

F. +43(0)1 489 3961-7

[mail@szabo-scandic.com](mailto:mail@szabo-scandic.com)

[www.szabo-scandic.com](http://www.szabo-scandic.com)

[linkedin.com/company/szaboscandic](https://www.linkedin.com/company/szaboscandic) 

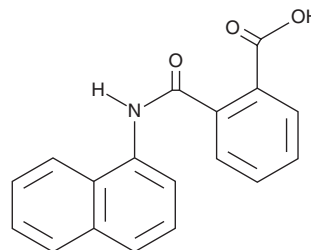
# PRODUCT INFORMATION



## Naptalam

Item No. 34285

**CAS Registry No.:** 132-66-1  
**Formal Name:** 2-[(1-naphthalenylamino)carbonyl]-benzoic acid  
**Synonyms:** Naphthalam, N-1-Naphthylphthalamic Acid, NPA, NSC 204421  
**MF:** C<sub>18</sub>H<sub>13</sub>NO<sub>3</sub>  
**FW:** 291.3  
**Purity:** ≥98%  
**UV/Vis.:** λ<sub>max</sub>: 224 nm  
**Supplied as:** A solid  
**Storage:** -20°C  
**Stability:** ≥4 years



Information represents the product specifications. Batch specific analytical results are provided on each certificate of analysis.

### Laboratory Procedures

Naptalam is supplied as a solid. A stock solution may be made by dissolving the naptalam in the solvent of choice, which should be purged with an inert gas. Naptalam is soluble in organic solvents such as DMSO and dimethyl formamide (DMF). The solubility of naptalam in these solvents is approximately 15 and 25 mg/ml, respectively.

Naptalam is sparingly soluble in aqueous buffers. For maximum solubility in aqueous buffers, naptalam should first be dissolved in DMF and then diluted with the aqueous buffer of choice. Naptalam has a solubility of approximately 0.25 mg/ml in a 1:3 solution of DMF:PBS (pH 7.2) using this method. We do not recommend storing the aqueous solution for more than one day.

### Description

Naptalam is an auxin inhibitor and herbicide.<sup>1,2</sup> It reduces coleoptile accumulation of the polar auxin indole-3-acetic acid (Item No. 16954) in maize when used at a concentration of 50 μM.<sup>1</sup> Naptalam inhibits various auxin-dependent processes, such as embryo development, lateral root development, leaf vein patterning, apical dominance, and adventitious root formation, in monocotyledons.<sup>3</sup>

### References

1. Nishimura, T. and Koshiba, T. Auxin biosynthesis site and polar transport in maize coleoptiles. *Plant Signal. Behav.* **5**(5), 573-575 (2010).
2. Wolfe, M.F. and Seiber, J.N. A method for the trace analysis of naptalam (N-1-naphthylphthalamic acid) in water. *Arch. Environ. Contam. Toxicol.* **23**(1), 137-141 (1992).
3. Teale, W. and Palme, K. Naphthylphthalamic acid and the mechanism of polar auxin transport. *J. Exp. Bot.* **69**(2), 303-312 (2018).

#### WARNING

THIS PRODUCT IS FOR RESEARCH ONLY - NOT FOR HUMAN OR VETERINARY DIAGNOSTIC OR THERAPEUTIC USE.

#### SAFETY DATA

This material should be considered hazardous until further information becomes available. Do not ingest, inhale, get in eyes, on skin, or on clothing. Wash thoroughly after handling. Before use, the user must review the complete Safety Data Sheet, which has been sent via email to your institution.

#### WARRANTY AND LIMITATION OF REMEDY

Buyer agrees to purchase the material subject to Cayman's Terms and Conditions. Complete Terms and Conditions including Warranty and Limitation of Liability information can be found on our website.

Copyright Cayman Chemical Company, 07/25/2023

#### CAYMAN CHEMICAL

1180 EAST ELLSWORTH RD  
ANN ARBOR, MI 48108 · USA

**PHONE:** [800] 364-9897  
[734] 971-3335

**FAX:** [734] 971-3640

CUSTSERV@CAYMANCHEM.COM  
WWW.CAYMANCHEM.COM