



SZABO SCANDIC

Part of Europa Biosite

Produktinformation



Forschungsprodukte & Biochemikalien



Zellkultur & Verbrauchsmaterial



Diagnostik & molekulare Diagnostik



Laborgeräte & Service

Weitere Information auf den folgenden Seiten!
See the following pages for more information!



Lieferung & Zahlungsart

siehe unsere [Liefer- und Versandbedingungen](#)

Zuschläge

- Mindermengenzuschlag
- Trockeneiszuschlag
- Gefahrgutzuschlag
- Expressversand

SZABO-SCANDIC HandelsgmbH

Quellenstraße 110, A-1100 Wien

T. +43(0)1 489 3961-0

F. +43(0)1 489 3961-7

mail@szabo-scandic.com

www.szabo-scandic.com

[linkedin.com/company/szaboscandic](https://www.linkedin.com/company/szaboscandic) 

PRODUCT INFORMATION

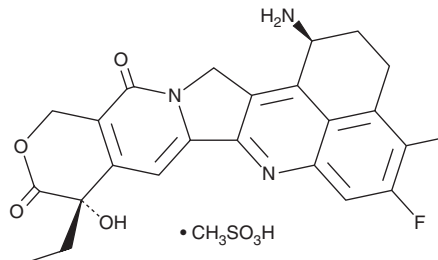


Exatecan (mesylate)

Item No. 35452

CAS Registry No.: 169869-90-3
Formal Name: (1S,9S)-1-amino-9-ethyl-5-fluoro-1,2,3,9,12,15-hexahydro-9-hydroxy-4-methyl-10H,13H-benzo[de]pyrano[3',4':6,7]indolizino[1,2-b]quinoline-10,13-dione, monomethanesulfonate

Synonym: DX 8951f
MF: C₂₄H₂₂FN₃O₄ • CH₃SO₃H
FW: 531.6
Purity: ≥98%
UV/Vis.: λ_{max}: 224, 261, 337 nm
Supplied as: A solid
Storage: -20°C
Stability: ≥4 years



Information represents the product specifications. Batch specific analytical results are provided on each certificate of analysis.

Laboratory Procedures

Exatecan (mesylate) is supplied as a solid. A stock solution may be made by dissolving the exatecan (mesylate) in the solvent of choice, which should be purged with an inert gas. Exatecan (mesylate) is soluble in DMSO.

Description

Exatecan is a derivative of camptothecin (Item No. 11694) and DNA topoisomerase I inhibitor (IC₅₀ = 0.975 μg/ml).¹ It inhibits cell growth in a panel of 32 breast, colon, stomach, and lung cancer cell lines (GI₅₀s = 0.125-10.4 ng/ml). Exatecan (3.325-50 mg/kg) reduces tumor growth in an SC-6-JCK gastric adenocarcinoma mouse xenograft model. It reduces tumor weight in HCT116, PC-6, and PC12 mouse xenograft models when administered at a dose of 75 mg/kg.² Exatecan has also been used in the synthesis of cytotoxic payload moieties of antibody-drug conjugates (ADCs).³ Formulations containing exatecan have been used in the treatment of breast, gastric, and gastroesophageal cancers.

References

1. Mitsui, I., Kumazawa, E., Hirota, Y., *et al.* A new water-soluble camptothecin derivative, DX-8951f, exhibits potent antitumor activity against human tumors *in vitro* and *in vivo*. *Jpn. J. Cancer Res.* **86(8)**, 776-782 (1995).
2. Kumazawa, E. and Ochi, Y. DE-310, a novel macromolecular carrier system for the camptothecin analog DX-8951f: Potent antitumor activities in various murine tumor models. *Cancer Sci.* **95(2)**, 168-175 (2004).
3. Conilh, L., Fournet, G., Fourmaux, E., *et al.* Exatecan antibody drug conjugates based on a hydrophilic polysarcosine drug-linker platform. *Pharmaceuticals (Basel)* **14(3)**, 247 (2021).

WARNING

THIS PRODUCT IS FOR RESEARCH ONLY - NOT FOR HUMAN OR VETERINARY DIAGNOSTIC OR THERAPEUTIC USE.

SAFETY DATA

This material should be considered hazardous until further information becomes available. Do not ingest, inhale, get in eyes, on skin, or on clothing. Wash thoroughly after handling. Before use, the user must review the complete Safety Data Sheet, which has been sent via email to your institution.

WARRANTY AND LIMITATION OF REMEDY

Buyer agrees to purchase the material subject to Cayman's Terms and Conditions. Complete Terms and Conditions including Warranty and Limitation of Liability information can be found on our website.

Copyright Cayman Chemical Company, 12/12/2022

CAYMAN CHEMICAL

1180 EAST ELLSWORTH RD
ANN ARBOR, MI 48108 · USA

PHONE: [800] 364-9897

[734] 971-3335

FAX: [734] 971-3640

CUSTSERV@CAYMANCHEM.COM
WWW.CAYMANCHEM.COM