



SZABO SCANDIC

Part of Europa Biosite

Produktinformation



Forschungsprodukte & Biochemikalien



Zellkultur & Verbrauchsmaterial



Diagnostik & molekulare Diagnostik



Laborgeräte & Service

Weitere Information auf den folgenden Seiten!
See the following pages for more information!



Lieferung & Zahlungsart

siehe unsere [Liefer- und Versandbedingungen](#)

Zuschläge

- Mindermengenzuschlag
- Trockeneiszuschlag
- Gefahrgutzuschlag
- Expressversand

SZABO-SCANDIC HandelsgmbH

Quellenstraße 110, A-1100 Wien

T. +43(0)1 489 3961-0

F. +43(0)1 489 3961-7

mail@szabo-scandic.com

www.szabo-scandic.com

[linkedin.com/company/szaboscandic](https://www.linkedin.com/company/szaboscandic) 

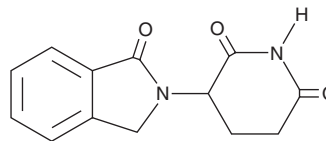
PRODUCT INFORMATION



EM-12

Item No. 35555

CAS Registry No.: 26581-81-7
Formal Name: 3-(1,3-dihydro-1-oxo-2H-isoindol-2-yl)-2,6-piperidinedione
MF: C₁₃H₁₂N₂O₃
FW: 244.2
Purity: ≥98%
UV/Vis.: λ_{max}: 229 nm
Supplied as: A crystalline solid
Storage: -20°C
Stability: ≥2 years



Information represents the product specifications. Batch specific analytical results are provided on each certificate of analysis.

Laboratory Procedures

EM-12 is supplied as a crystalline solid. A stock solution may be made by dissolving the EM-12 in the solvent of choice, which should be purged with an inert gas. EM-12 is soluble in organic solvents such as DMSO and dimethyl formamide (DMF). The solubility of EM-12 in these solvents is approximately 1 and 5 mg/ml, respectively.

EM-12 is sparingly soluble in aqueous buffers. For maximum solubility in aqueous buffers, EM-12 should first be dissolved in DMF and then diluted with the aqueous buffer of choice. EM-12 has a solubility of approximately 0.2 mg/ml in a 1:4 solution of DMF:PBS (pH 7.2) using this method. We do not recommend storing the aqueous solution for more than one day.

Description

EM-12 is a derivative of thalidomide (Item No. 14610) with teratogenic activity.¹ Intravenous administration of EM-12 (150 mg/kg) to pregnant females induces fetal resorption and skeletal malformation in surviving offspring in rats, rabbits, and rhesus monkeys. Dietary administration of EM-12 (12% w/w) enhances 1,2-dimethylhydrazine-induced colonic adenocarcinoma formation in rats.²

References

- Schumacher, H.J., Terapane, J., Jordan, R.L., *et al.* The teratogenic activity of a thalidomide analogue, EM₁₂ in rabbits, rats, and monkeys. *Teratology* **5(2)**, 233-240 (1972).
- Gershbein, L.L. The thalidomide analog, EM 12, enhances 1,2-dimethylhydrazine-induction of rat colon adenocarcinomas. *Cancer Lett.* **60(2)**, 129-133 (1991).

WARNING

THIS PRODUCT IS FOR RESEARCH ONLY - NOT FOR HUMAN OR VETERINARY DIAGNOSTIC OR THERAPEUTIC USE.

SAFETY DATA

This material should be considered hazardous until further information becomes available. Do not ingest, inhale, get in eyes, on skin, or on clothing. Wash thoroughly after handling. Before use, the user must review the [complete](#) Safety Data Sheet, which has been sent via email to your institution.

WARRANTY AND LIMITATION OF REMEDY

Buyer agrees to purchase the material subject to Cayman's Terms and Conditions. Complete Terms and Conditions including Warranty and Limitation of Liability information can be found on our website.

Copyright Cayman Chemical Company, 11/16/2021

CAYMAN CHEMICAL

1180 EAST ELLSWORTH RD
ANN ARBOR, MI 48108 · USA

PHONE: [800] 364-9897
[734] 971-3335

FAX: [734] 971-3640

CUSTSERV@CAYMANCHEM.COM
WWW.CAYMANCHEM.COM