



# SZABO SCANDIC

Part of Europa Biosite

## Produktinformation



Forschungsprodukte & Biochemikalien



Zellkultur & Verbrauchsmaterial



Diagnostik & molekulare Diagnostik



Laborgeräte & Service

Weitere Information auf den folgenden Seiten!  
See the following pages for more information!



### Lieferung & Zahlungsart

siehe unsere [Liefer- und Versandbedingungen](#)

### Zuschläge

- Mindermengenzuschlag
- Trockeneiszuschlag
- Gefahrgutzuschlag
- Expressversand

### SZABO-SCANDIC HandelsgmbH

Quellenstraße 110, A-1100 Wien

T. +43(0)1 489 3961-0

F. +43(0)1 489 3961-7

[mail@szabo-scandic.com](mailto:mail@szabo-scandic.com)

[www.szabo-scandic.com](http://www.szabo-scandic.com)

[linkedin.com/company/szaboscandic](https://www.linkedin.com/company/szaboscandic) 

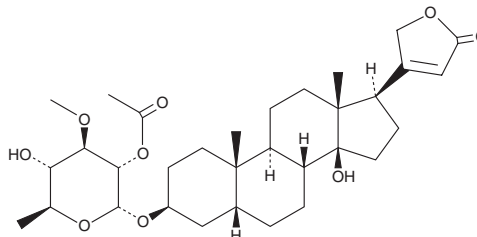
# PRODUCT INFORMATION



## Cerberin

Item No. 35582

**CAS Registry No.:** 25633-33-4  
**Formal Name:** (3 $\beta$ ,5 $\beta$ )-3-[(2-O-acetyl-6-deoxy-3-O-methyl- $\alpha$ -L-glucopyranosyl)oxy]-14-hydroxy-card-20(22)-enolide  
**Synonym:** 2'-Acetylneriifolin  
**MF:** C<sub>32</sub>H<sub>48</sub>O<sub>9</sub>  
**FW:** 576.7  
**Purity:**  $\geq$ 98%  
**Supplied as:** A solid  
**Storage:** -20°C  
**Stability:**  $\geq$ 4 years  
**Item Origin:** Synthetic



Information represents the product specifications. Batch specific analytical results are provided on each certificate of analysis.

### Laboratory Procedures

Cerberin is supplied as a solid. A stock solution may be made by dissolving the cerberin in the solvent of choice, which should be purged with an inert gas. Cerberin is slightly soluble in chloroform and methanol.

### Description

Cerberin is a cardiac glycoside that has been found in *C. odollam* and has cytotoxic and cardiac modulatory activities.<sup>1,2</sup> It is cytotoxic to KB and NCI H187 cancer cells (IC<sub>50</sub>s = 1.92 and 1.24  $\mu$ g/ml).<sup>1</sup> Cerberin inhibits Na<sup>+</sup>/K<sup>+</sup>-ATPase, increasing intracellular sodium levels and action potential duration in cardiac cells.<sup>2</sup>

### References

1. Laphookhieo, S., Cheenpracha, S., Karalai, C., *et al.* Cytotoxic cardenolide glycoside from the seeds of *Cerbera odollam*. *Phytochemistry* **65**(4), 507-510 (2004).
2. Menezes, R.G., Usman, M.S., Hussain, S.A., *et al.* Cerbera odollam toxicity: A review. *J. Forensic Leg. Med.* **58**, 113-116 (2018).

#### WARNING

THIS PRODUCT IS FOR RESEARCH ONLY - NOT FOR HUMAN OR VETERINARY DIAGNOSTIC OR THERAPEUTIC USE.

#### SAFETY DATA

This material should be considered hazardous until further information becomes available. Do not ingest, inhale, get in eyes, on skin, or on clothing. Wash thoroughly after handling. Before use, the user must review the [complete](#) Safety Data Sheet, which has been sent via email to your institution.

#### WARRANTY AND LIMITATION OF REMEDY

Buyer agrees to purchase the material subject to Cayman's Terms and Conditions. Complete Terms and Conditions including Warranty and Limitation of Liability information can be found on our website.

Copyright Cayman Chemical Company, 11/17/2022

#### CAYMAN CHEMICAL

1180 EAST ELLSWORTH RD  
ANN ARBOR, MI 48108 · USA

**PHONE:** [800] 364-9897  
[734] 971-3335

**FAX:** [734] 971-3640

CUSTSERV@CAYMANCHEM.COM  
WWW.CAYMANCHEM.COM