



SZABO SCANDIC

Part of Europa Biosite

Produktinformation



Forschungsprodukte & Biochemikalien



Zellkultur & Verbrauchsmaterial



Diagnostik & molekulare Diagnostik



Laborgeräte & Service

Weitere Information auf den folgenden Seiten!
See the following pages for more information!



Lieferung & Zahlungsart

siehe unsere [Liefer- und Versandbedingungen](#)

Zuschläge

- Mindermengenzuschlag
- Trockeneiszuschlag
- Gefahrgutzuschlag
- Expressversand

SZABO-SCANDIC HandelsgmbH

Quellenstraße 110, A-1100 Wien

T. +43(0)1 489 3961-0

F. +43(0)1 489 3961-7

mail@szabo-scandic.com

www.szabo-scandic.com

[linkedin.com/company/szaboscandic](https://www.linkedin.com/company/szaboscandic) 

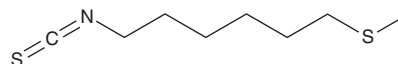
PRODUCT INFORMATION



1-Isothiocyanato-6-(methylsulfenyl)-hexane

Item No. 35595

CAS Registry No.: 4430-39-1
Formal Name: 1-isothiocyanato-6-(methylthio)-hexane
Synonyms: Lesquerellin, 6-Methylthiohexyl Isothiocyanate
MF: C₈H₁₅NS₂
FW: 189.3
Purity: ≥98%
UV/Vis.: λ_{max}: 244 nm
Supplied as: A solution in ethanol
Storage: -20°C
Stability: ≥2 years
Item Origin: Synthetic



Information represents the product specifications. Batch specific analytical results are provided on each certificate of analysis.

Description

1-Isothiocyanato-6-(methylsulfenyl)-hexane is an isothiocyanate that has been found in wasabi (*W. japonica*) and has diverse biological activities.^{1,2} It is active against the bacterium *B. subtilis* in an agar diffusion assay when used at a concentration of 25 μmol/disc and the fungus *T. mentagrophytes* (MIC = 25 μg/ml).² It has repellent activity in the blue mussel (*M. edulis*) assay, as well as antifouling activity in the conventional submerged assay when applied to polyvinyl chloride (PVC) plates at a concentration of 50 μmol/cm².²

References

1. Toh, H., Nishimura, A., Takasawa, R., *et al.* ω-Methylsulfanylalkyl isothiocyanates in wasabi, *Wasabia japonica* Matsum. *Agric. Biol. Chem.* **54(6)**, 1587-1589 (1990).
2. Takasawa, R., Ogura, C., Watanabe, N., *et al.* An efficient laboratory matching and screening method for antifouling substances using the blue mussel, *Mytilus edulis*, and an antimicrobial assay. *Biosci. Biotech. Bioch.* **56(8)**, 1208-1211 (1992).

WARNING

THIS PRODUCT IS FOR RESEARCH ONLY - NOT FOR HUMAN OR VETERINARY DIAGNOSTIC OR THERAPEUTIC USE.

SAFETY DATA

This material should be considered hazardous until further information becomes available. Do not ingest, inhale, get in eyes, on skin, or on clothing. Wash thoroughly after handling. Before use, the user must review the [complete](#) Safety Data Sheet, which has been sent via email to your institution.

WARRANTY AND LIMITATION OF REMEDY

Buyer agrees to purchase the material subject to Cayman's Terms and Conditions. Complete Terms and Conditions including Warranty and Limitation of Liability information can be found on our website.

Copyright Cayman Chemical Company, 12/07/2022

CAYMAN CHEMICAL

1180 EAST ELLSWORTH RD
ANN ARBOR, MI 48108 · USA

PHONE: [800] 364-9897
[734] 971-3335

FAX: [734] 971-3640

CUSTSERV@CAYMANCHEM.COM
WWW.CAYMANCHEM.COM