



# SZABO SCANDIC

Part of Europa Biosite

## Produktinformation



Forschungsprodukte & Biochemikalien



Zellkultur & Verbrauchsmaterial



Diagnostik & molekulare Diagnostik



Laborgeräte & Service

Weitere Information auf den folgenden Seiten!  
See the following pages for more information!



### Lieferung & Zahlungsart

siehe unsere [Liefer- und Versandbedingungen](#)

### Zuschläge

- Mindermengenzuschlag
- Trockeneiszuschlag
- Gefahrgutzuschlag
- Expressversand

### SZABO-SCANDIC HandelsgmbH

Quellenstraße 110, A-1100 Wien

T. +43(0)1 489 3961-0

F. +43(0)1 489 3961-7

[mail@szabo-scandic.com](mailto:mail@szabo-scandic.com)

[www.szabo-scandic.com](http://www.szabo-scandic.com)

[linkedin.com/company/szaboscandic](https://www.linkedin.com/company/szaboscandic) 

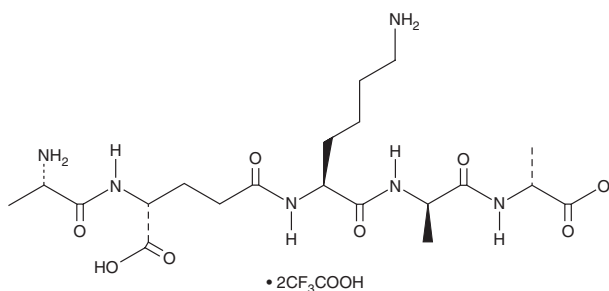
# PRODUCT INFORMATION



## Ala-D-γ-Glu-Lys-D-Ala-D-Ala (trifluoroacetate salt)

Item No. 36453

**CAS Registry No.:** 62182-55-2  
**Formal Name:** N-[N-[N<sup>2</sup>-(N-L-alanyl-D-γ-glutamyl)-L-lysyl]-D-alanyl]-D-alanine, bis(trifluoroacetate)  
**Synonyms:** A0910, Ala-D-isoGlu-Lys-D-Ala-D-Ala  
**Peptide Sequence:** A-γ-eKaa-OH  
**MF:** C<sub>20</sub>H<sub>36</sub>N<sub>6</sub>O<sub>8</sub> • 2CF<sub>3</sub>COOH  
**FW:** 716.6  
**Purity:** ≥98%  
**Supplied as:** A solid  
**Storage:** -20°C  
**Stability:** ≥4 years



Information represents the product specifications. Batch specific analytical results are provided on each certificate of analysis.

### Laboratory Procedures

Ala-D-γ-Glu-Lys-D-Ala-D-Ala (trifluoroacetate salt) is supplied as a solid. A stock solution may be made by dissolving the Ala-D-γ-Glu-Lys-D-Ala-D-Ala (trifluoroacetate salt) in water. We do not recommend storing the aqueous solution for more than one day.

### Description

Ala-D-γ-Glu-Lys-D-Ala-D-Ala is pentapeptide component of bacterial peptidoglycans.<sup>1-3</sup> It inhibits the binding of radiolabeled antigen with antiserum isolated from rabbits immunized with an Ala-D-γ-Glu-Lys-D-Ala-D-Ala-containing polypeptide (IC<sub>50</sub> = 1,250 pmol).<sup>3</sup>

### References

1. Goleš, D., Tomić, L., and Keglević, D. Synthesis of the four structural isomeric L-pentapeptides of Ala. Glu. Lys. Ala. Ala. sequence: Characterization and correlation with the L-D-L-D-D-isomer related to the peptidoglycan peptide chain. *Croat. Chem. Acta* **48(3)**, 365-378 (1976).
2. Gust, A.A., Biswas, R., Lenz, H.D., et al. Bacteria-derived peptidoglycans constitute pathogen-associated molecular patterns triggering innate immunity in *Arabidopsis*. *J. Biol. Chem.* **282(44)**, 32338-32348 (2007).
3. Zeiger, A.R. and Maurer, P.H. Immunochemistry of a synthetic peptidoglycan-precursor pentapeptide. *Biochemistry* **12(18)**, 3387-3394 (1973).

#### WARNING

THIS PRODUCT IS FOR RESEARCH ONLY - NOT FOR HUMAN OR VETERINARY DIAGNOSTIC OR THERAPEUTIC USE.

#### SAFETY DATA

This material should be considered hazardous until further information becomes available. Do not ingest, inhale, get in eyes, on skin, or on clothing. Wash thoroughly after handling. Before use, the user must review the complete Safety Data Sheet, which has been sent via email to your institution.

#### WARRANTY AND LIMITATION OF REMEDY

Buyer agrees to purchase the material subject to Cayman's Terms and Conditions. Complete Terms and Conditions including Warranty and Limitation of Liability information can be found on our website.

Copyright Cayman Chemical Company, 09/25/2023

#### CAYMAN CHEMICAL

1180 EAST ELLSWORTH RD  
ANN ARBOR, MI 48108 · USA

**PHONE:** [800] 364-9897  
[734] 971-3335

**FAX:** [734] 971-3640

CUSTSERV@CAYMANCHEM.COM  
WWW.CAYMANCHEM.COM