



SZABO SCANDIC

Part of Europa Biosite

Produktinformation



Forschungsprodukte & Biochemikalien



Zellkultur & Verbrauchsmaterial



Diagnostik & molekulare Diagnostik



Laborgeräte & Service

Weitere Information auf den folgenden Seiten!
See the following pages for more information!



Lieferung & Zahlungsart

siehe unsere [Liefer- und Versandbedingungen](#)

Zuschläge

- Mindermengenzuschlag
- Trockeneiszuschlag
- Gefahrgutzuschlag
- Expressversand

SZABO-SCANDIC HandelsgmbH

Quellenstraße 110, A-1100 Wien

T. +43(0)1 489 3961-0

F. +43(0)1 489 3961-7

mail@szabo-scandic.com

www.szabo-scandic.com

[linkedin.com/company/szaboscandic](https://www.linkedin.com/company/szaboscandic) 

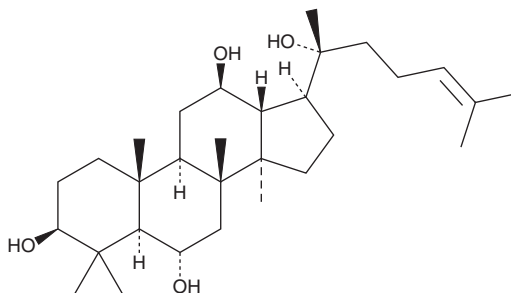
PRODUCT INFORMATION



20(R)-Protopanaxatriol

Item No. 36530

CAS Registry No.: 1453-93-6
Formal Name: (3 β ,6 α ,12 β ,20R)-dammar-24-ene-3,6,12,20-tetrol
Synonyms: 20(R)-APPT, 20(R)-PPT
MF: C₃₀H₅₂O₄
FW: 476.7
Purity: \geq 98%
Supplied as: A solid
Storage: -20°C
Stability: \geq 4 years



Information represents the product specifications. Batch specific analytical results are provided on each certificate of analysis.

Laboratory Procedures

20(R)-Protopanaxatriol is supplied as a solid. A stock solution may be made by dissolving the 20(R)-protopanaxatriol in the solvent of choice, which should be purged with an inert gas. 20(R)-Protopanaxatriol is soluble in DMSO.

Description

20(R)-Protopanaxatriol is a degradation product of panaxatriols and an isomer of 20(S)-panaxatriol (Item No. 29073).¹ It is cytotoxic to P388, L1210, and K562 leukemia cells (EC₅₀s = 34, 32, and 38 μ M). 20(R)-Protopanaxatriol inhibits EGFR (IC₅₀ = 24.1 μ M) in a cell-free assay and is cytotoxic to HepG2 cells when used at concentrations ranging from 20 to 100 μ M.²

References

1. Baek, N.-I., Kim, D.S., Lee, Y.H., *et al.* Cytotoxicities of *Ginseng saponins* and their degradation products against some cancer cell lines. *Arch. Pharm. Res.* **18(3)**, 164-168 (1998).
2. Zhao, J., Zhang, T., Liang, Y., *et al.* Inhibitory activities of 20(R, S)-protopanaxatriol against epidermal growth factor receptor tyrosine kinase. *Food Chem. Toxicol.* **155**, 112411 (2021).

WARNING

THIS PRODUCT IS FOR RESEARCH ONLY - NOT FOR HUMAN OR VETERINARY DIAGNOSTIC OR THERAPEUTIC USE.

SAFETY DATA

This material should be considered hazardous until further information becomes available. Do not ingest, inhale, get in eyes, on skin, or on clothing. Wash thoroughly after handling. Before use, the user must review the [complete](#) Safety Data Sheet, which has been sent via email to your institution.

WARRANTY AND LIMITATION OF REMEDY

Buyer agrees to purchase the material subject to Cayman's Terms and Conditions. Complete Terms and Conditions including Warranty and Limitation of Liability information can be found on our website.

Copyright Cayman Chemical Company, 11/07/2022

CAYMAN CHEMICAL

1180 EAST ELLSWORTH RD
ANN ARBOR, MI 48108 · USA

PHONE: [800] 364-9897
[734] 971-3335

FAX: [734] 971-3640

CUSTSERV@CAYMANCHEM.COM
WWW.CAYMANCHEM.COM