



SZABO SCANDIC

Part of Europa Biosite

Produktinformation



Forschungsprodukte & Biochemikalien



Zellkultur & Verbrauchsmaterial



Diagnostik & molekulare Diagnostik



Laborgeräte & Service

Weitere Information auf den folgenden Seiten!
See the following pages for more information!



Lieferung & Zahlungsart

siehe unsere [Liefer- und Versandbedingungen](#)

Zuschläge

- Mindermengenzuschlag
- Trockeneiszuschlag
- Gefahrgutzuschlag
- Expressversand

SZABO-SCANDIC HandelsgmbH

Quellenstraße 110, A-1100 Wien

T. +43(0)1 489 3961-0

F. +43(0)1 489 3961-7

mail@szabo-scandic.com

www.szabo-scandic.com

[linkedin.com/company/szaboscandic](https://www.linkedin.com/company/szaboscandic) 

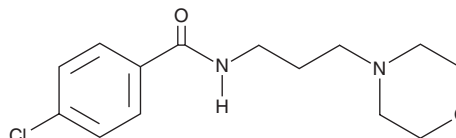
PRODUCT INFORMATION



Eprobemide

Item No. 36604

CAS Registry No.: 87940-60-1
Formal Name: 4-chloro-N-[3-(4-morpholinyl)propyl]-benzamide
MF: C₁₄H₁₉ClN₂O₂
FW: 282.8
Purity: ≥98%
UV/Vis.: λ_{max}: 237 nm
Supplied as: A solid
Storage: -20°C
Stability: ≥4 years



Information represents the product specifications. Batch specific analytical results are provided on each certificate of analysis.

Laboratory Procedures

Eprobemide is supplied as a solid. A stock solution may be made by dissolving the eprobemide in the solvent of choice, which should be purged with an inert gas. Eprobemide is soluble in organic solvents such as ethanol, DMSO, and dimethyl formamide. The solubility of eprobemide in DMF is approximately 25 mg/ml and approximately 10 mg/ml in ethanol and DMSO.

Further dilutions of the stock solution into aqueous buffers or isotonic saline should be made prior to performing biological experiments. Ensure that the residual amount of organic solvent is insignificant, since organic solvents may have physiological effects at low concentrations. Organic solvent-free aqueous solutions of eprobemide can be prepared by directly dissolving the solid in aqueous buffers. The solubility of eprobemide in PBS (pH 7.2) is approximately 0.5 mg/ml. We do not recommend storing the aqueous solution for more than one day.

Description

Eprobemide is an inhibitor of monoamine oxidase A (MAO-A).¹ It reduces immobility time in a modified version of the forced swim test in rats when administered at a dose of 10 mg/kg.² Formulations containing eprobemide have previously been used in the treatment of depression.

References

1. Zaqgorevskii, V.A., Valdman, A.V., Kozlovskaya, M.M., *et al.* Search for antidepressants among benzamide derivatives. *Khimiko-Farmatsevticheskii Zhurnal* **23(11)**, 1304-1309 (1989).
2. Bondarenko, N.A., Gorantcheva, J., Tyutyulkova, N., *et al.* Effect of some benzamide derivatives on stress-induced behavior and striatum dopamine receptors. *Methods Find. Exp. Clin. Pharmacol.* **10(7)**, 629-633 (1988).

WARNING

THIS PRODUCT IS FOR RESEARCH ONLY - NOT FOR HUMAN OR VETERINARY DIAGNOSTIC OR THERAPEUTIC USE.

SAFETY DATA

This material should be considered hazardous until further information becomes available. Do not ingest, inhale, get in eyes, on skin, or on clothing. Wash thoroughly after handling. Before use, the user must review the complete Safety Data Sheet, which has been sent via email to your institution.

WARRANTY AND LIMITATION OF REMEDY

Buyer agrees to purchase the material subject to Cayman's Terms and Conditions. Complete Terms and Conditions including Warranty and Limitation of Liability information can be found on our website.

Copyright Cayman Chemical Company, 05/10/2023

CAYMAN CHEMICAL

1180 EAST ELLSWORTH RD

ANN ARBOR, MI 48108 · USA

PHONE: [800] 364-9897

[734] 971-3335

FAX: [734] 971-3640

CUSTSERV@CAYMANCHEM.COM

WWW.CAYMANCHEM.COM