



SZABO SCANDIC

Part of Europa Biosite

Produktinformation



Forschungsprodukte & Biochemikalien



Zellkultur & Verbrauchsmaterial



Diagnostik & molekulare Diagnostik



Laborgeräte & Service

Weitere Information auf den folgenden Seiten!
See the following pages for more information!



Lieferung & Zahlungsart

siehe unsere [Liefer- und Versandbedingungen](#)

Zuschläge

- Mindermengenzuschlag
- Trockeneiszuschlag
- Gefahrgutzuschlag
- Expressversand

SZABO-SCANDIC HandelsgmbH

Quellenstraße 110, A-1100 Wien

T. +43(0)1 489 3961-0

F. +43(0)1 489 3961-7

mail@szabo-scandic.com

www.szabo-scandic.com

[linkedin.com/company/szaboscandic](https://www.linkedin.com/company/szaboscandic) 

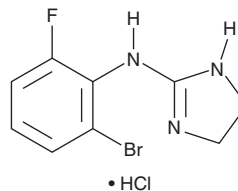
PRODUCT INFORMATION



Romifidine (hydrochloride)

Item No. 36693

CAS Registry No.: 65896-14-2
Formal Name: N-(2-bromo-6-fluorophenyl)-4,5-dihydro-1H-imidazol-2-amine, monohydrochloride
Synonym: STH 2130
MF: C₉H₉BrFN₃ • HCl
FW: 294.6
Purity: ≥98%
Supplied as: A solid
Storage: -20°C
Stability: ≥4 years



Information represents the product specifications. Batch specific analytical results are provided on each certificate of analysis.

Laboratory Procedures

Romifidine (hydrochloride) is supplied as a solid. A stock solution may be made by dissolving the romifidine (hydrochloride) in the solvent of choice, which should be purged with an inert gas. Romifidine (hydrochloride) is sparingly soluble (1-10 mg/ml) in DMSO and slightly soluble (0.1-1 mg/ml) in ethanol.

Further dilutions of the stock solution into aqueous buffers or isotonic saline should be made prior to performing biological experiments. Ensure that the residual amount of organic solvent is insignificant, since organic solvents may have physiological effects at low concentrations. Organic solvent-free aqueous solutions of romifidine (hydrochloride) can be prepared by directly dissolving the solid in aqueous buffers. Romifidine (hydrochloride) is sparingly soluble (1-10 mg/ml) in PBS (pH 7.2). We do not recommend storing the aqueous solution for more than one day.

Description

Romifidine is an α_2 -adrenergic receptor (α_2 -AR) agonist.¹ Epidural administration of romifidine (50 μ g/kg) induces antinociception and sedation in donkeys. It also induces bradycardia in horses when administered at doses ranging from 0.04 to 0.12 mg/kg.² Formulations containing romifidine have been used as veterinary sedatives. This product is also available as an analytical reference standard (Item No. 38581).

References

1. Marzok, M., Almubarak, A.I., Babiker, H., *et al.* Comparative evaluation of sedative and anti-nociceptive effects of epidural romifidine, romifidine-lidocaine, and lidocaine in donkeys (*Equus asinus*). *Front. Vet. Sci.* **9**, 966715 (2022).
2. Gasthuys, F., Parmentier, D., Goossens, L., *et al.* A preliminary study on the effects of atropine sulphate on bradycardia and heart blocks during romifidine sedation in the horse. *Vet. Res. Commun.* **14(6)**, 489-502 (1990).

WARNING

THIS PRODUCT IS FOR RESEARCH ONLY - NOT FOR HUMAN OR VETERINARY DIAGNOSTIC OR THERAPEUTIC USE.

SAFETY DATA

This material should be considered hazardous until further information becomes available. Do not ingest, inhale, get in eyes, on skin, or on clothing. Wash thoroughly after handling. Before use, the user must review the complete Safety Data Sheet, which has been sent via email to your institution.

WARRANTY AND LIMITATION OF REMEDY

Buyer agrees to purchase the material subject to Cayman's Terms and Conditions. Complete Terms and Conditions including Warranty and Limitation of Liability information can be found on our website.

Copyright Cayman Chemical Company, 04/05/2024

CAYMAN CHEMICAL

1180 EAST ELLSWORTH RD

ANN ARBOR, MI 48108 · USA

PHONE: [800] 364-9897

[734] 971-3335

FAX: [734] 971-3640

CUSTSERV@CAYMANCHEM.COM

WWW.CAYMANCHEM.COM