



# SZABO SCANDIC

Part of Europa Biosite

## Produktinformation



Forschungsprodukte & Biochemikalien



Zellkultur & Verbrauchsmaterial



Diagnostik & molekulare Diagnostik



Laborgeräte & Service

Weitere Information auf den folgenden Seiten!  
See the following pages for more information!



### Lieferung & Zahlungsart

siehe unsere [Liefer- und Versandbedingungen](#)

### Zuschläge

- Mindermengenzuschlag
- Trockeneiszuschlag
- Gefahrgutzuschlag
- Expressversand

### SZABO-SCANDIC HandelsgmbH

Quellenstraße 110, A-1100 Wien

T. +43(0)1 489 3961-0

F. +43(0)1 489 3961-7

[mail@szabo-scandic.com](mailto:mail@szabo-scandic.com)

[www.szabo-scandic.com](http://www.szabo-scandic.com)

[linkedin.com/company/szaboscandic](https://www.linkedin.com/company/szaboscandic) 

# PRODUCT INFORMATION



## BigLEN (mouse) (acetate)

Item No. 36766

**Formal Name:** L-leucyl-L- $\alpha$ -glutamyl-L-asparaginyl-L-prolyl-L-seryl-L-prolyl-L-glutamyl-L-alanyl-L-prolyl-L-alanyl-L-arginyl-L-arginyl-L-leucyl-L-leucyl-L-prolyl-L-proline, acetate

**Peptide Sequence:** LENPSPQAPARRLLPP-OH

**MF:** C<sub>78</sub>H<sub>130</sub>N<sub>24</sub>O<sub>22</sub> • XC<sub>2</sub>H<sub>4</sub>O<sub>2</sub>

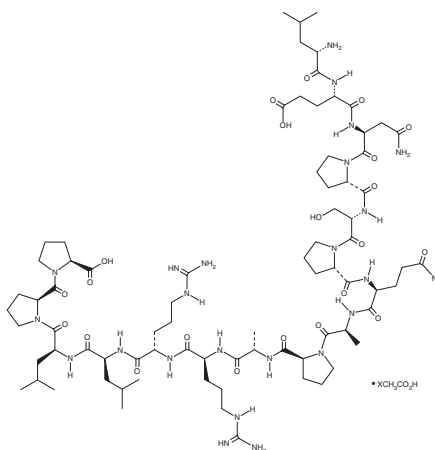
**FW:** 1,756.0

**Purity:**  $\geq 90\%$

**Supplied as:** A solid

**Storage:** -20°C

**Stability:**  $\geq 4$  years



Information represents the product specifications. Batch specific analytical results are provided on each certificate of analysis.

### Laboratory Procedures

BigLEN (mouse) (acetate) is supplied as a solid. A stock solution may be made by dissolving the BigLEN (mouse) (acetate) in water. We do not recommend storing the aqueous solution for more than one day

### Description

BigLEN is a neuropeptide and fragment of the pro-protein ProSAAS, involved in food intake, and an agonist of the orphan G protein-coupled receptor 171 (GPR171).<sup>1</sup> It selectively increases intracellular calcium levels in CHO cells expressing GPR171 over those expressing GPR19, GPR108, or GPR165 at 1  $\mu$ M. BigLEN (10  $\mu$ M) increases neurite outgrowth in mouse Neuro2a neuroblastoma cells.

### Reference

1. Gomes, I., Aryal, D.K., Wardman, J.H., *et al.* GPR171 is a hypothalamic G protein-coupled receptor for BigLEN, a neuropeptide involved in feeding. *Proc. Natl. Acad. Sci. USA* **110(40)**, 16211-16216 (2013).

#### WARNING

THIS PRODUCT IS FOR RESEARCH ONLY - NOT FOR HUMAN OR VETERINARY DIAGNOSTIC OR THERAPEUTIC USE.

#### SAFETY DATA

This material should be considered hazardous until further information becomes available. Do not ingest, inhale, get in eyes, on skin, or on clothing. Wash thoroughly after handling. Before use, the user must review the [complete](#) Safety Data Sheet, which has been sent via email to your institution.

#### WARRANTY AND LIMITATION OF REMEDY

Buyer agrees to purchase the material subject to Cayman's Terms and Conditions. Complete Terms and Conditions including Warranty and Limitation of Liability information can be found on our website.

Copyright Cayman Chemical Company, 08/17/2023

#### CAYMAN CHEMICAL

1180 EAST ELLSWORTH RD  
ANN ARBOR, MI 48108 · USA

**PHONE:** [800] 364-9897

[734] 971-3335

**FAX:** [734] 971-3640

CUSTSERV@CAYMANCHEM.COM

WWW.CAYMANCHEM.COM