



# SZABO SCANDIC

Part of Europa Biosite

## Produktinformation



Forschungsprodukte & Biochemikalien



Zellkultur & Verbrauchsmaterial



Diagnostik & molekulare Diagnostik



Laborgeräte & Service

Weitere Information auf den folgenden Seiten!  
See the following pages for more information!



### Lieferung & Zahlungsart

siehe unsere [Liefer- und Versandbedingungen](#)

### Zuschläge

- Mindermengenzuschlag
- Trockeneiszuschlag
- Gefahrgutzuschlag
- Expressversand

### SZABO-SCANDIC HandelsgmbH

Quellenstraße 110, A-1100 Wien

T. +43(0)1 489 3961-0

F. +43(0)1 489 3961-7

[mail@szabo-scandic.com](mailto:mail@szabo-scandic.com)

[www.szabo-scandic.com](http://www.szabo-scandic.com)

[linkedin.com/company/szaboscandic](https://www.linkedin.com/company/szaboscandic) 

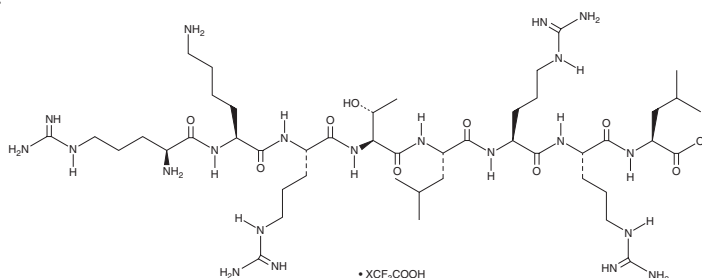
# PRODUCT INFORMATION



## EGFR Peptide (human, mouse) (trifluoroacetate salt)

Item No. 36896

**Formal Name:** L-arginyl-L-lysyl-L-arginyl-L-threonyl-L-leucyl-L-arginyl-L-arginyl-L-leucine, trifluoroacetate salt  
**Synonym:** Arg-Lys-Arg-Thr-Leu-Arg-Arg-Leu-OH, Epidermal Growth Factor Receptor Peptide  
**Peptide Sequence:** RKRTLRRLL-OH  
**MF:** C<sub>46</sub>H<sub>91</sub>N<sub>21</sub>O<sub>10</sub> • XCF<sub>3</sub>COOH  
**FW:** 1,098.4  
**Purity:** ≥95%  
**Supplied as:** A crystalline solid  
**Storage:** -20°C  
**Stability:** ≥4 years



Information represents the product specifications. Batch specific analytical results are provided on each certificate of analysis.

### Laboratory Procedures

EGFR peptide (human, mouse) (trifluoroacetate salt) is supplied as a crystalline solid. Aqueous solutions of EGFR peptide (human, mouse) (trifluoroacetate salt) can be prepared by directly dissolving the crystalline solid in aqueous buffers. The solubility of EGFR peptide (human, mouse) (trifluoroacetate salt) in PBS (pH 7.2) is approximately 10 mg/ml. We do not recommend storing the aqueous solution for more than one day.

### Description

EGFR peptide is a peptide substrate of PKC that corresponds to an amino acid sequence from the intracellular region of EGFR.<sup>1</sup> It has been used to monitor PKC activity in primary bovine retinal endothelial cells. Unlike EGFR peptide (myristoylated) (Item No. 36897), EGFR peptide does not inhibit PKC when used at a concentration of 50 μM.<sup>2</sup>

### References

1. Park, J.Y., Tajkahara, N., Gabriele, A., *et al.* Induction of endothelin-1 expression by glucose: An effect of protein kinase C activation. *Diabetes* **49(7)**, 1239-1248 (2000).
2. O'Brian, C.A., Ward, N.E., Liskamp, R.M., *et al.* A novel N-myristylated synthetic octapeptide inhibits protein kinase C activity and partially reverses murine fibrosarcoma cell resistance to adriamycin. *Invest. New Drugs* **9(2)**, 169-179 (1991).

#### WARNING

THIS PRODUCT IS FOR RESEARCH ONLY - NOT FOR HUMAN OR VETERINARY DIAGNOSTIC OR THERAPEUTIC USE.

#### SAFETY DATA

This material should be considered hazardous until further information becomes available. Do not ingest, inhale, get in eyes, on skin, or on clothing. Wash thoroughly after handling. Before use, the user must review the [complete](#) Safety Data Sheet, which has been sent via email to your institution.

#### WARRANTY AND LIMITATION OF REMEDY

Buyer agrees to purchase the material subject to Cayman's Terms and Conditions. Complete Terms and Conditions including Warranty and Limitation of Liability information can be found on our website.

Copyright Cayman Chemical Company, 08/17/2023

#### CAYMAN CHEMICAL

1180 EAST ELLSWORTH RD  
ANN ARBOR, MI 48108 · USA

PHONE: [800] 364-9897

[734] 971-3335

FAX: [734] 971-3640

CUSTSERV@CAYMANCHEM.COM

WWW.CAYMANCHEM.COM