



# SZABO SCANDIC

Part of Europa Biosite

## Produktinformation



Forschungsprodukte & Biochemikalien



Zellkultur & Verbrauchsmaterial



Diagnostik & molekulare Diagnostik



Laborgeräte & Service

Weitere Information auf den folgenden Seiten!  
See the following pages for more information!



### Lieferung & Zahlungsart

siehe unsere [Liefer- und Versandbedingungen](#)

### Zuschläge

- Mindermengenzuschlag
- Trockeneiszuschlag
- Gefahrgutzuschlag
- Expressversand

### SZABO-SCANDIC HandelsgmbH

Quellenstraße 110, A-1100 Wien

T. +43(0)1 489 3961-0

F. +43(0)1 489 3961-7

[mail@szabo-scandic.com](mailto:mail@szabo-scandic.com)

[www.szabo-scandic.com](http://www.szabo-scandic.com)

[linkedin.com/company/szaboscandic](https://www.linkedin.com/company/szaboscandic) 

# PRODUCT INFORMATION



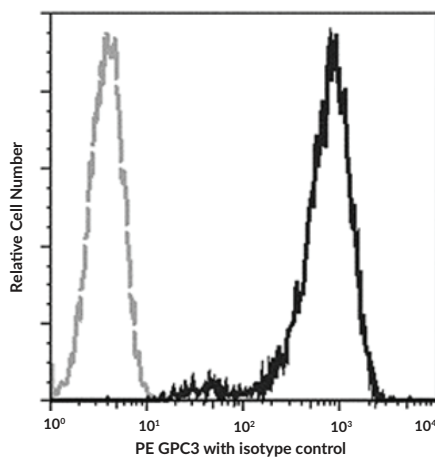
## Glypican-3 Rabbit Monoclonal Antibody (PE)

Item No. 37008

### Overview and Properties

<b>Contents:</b>	This vial contains protein A-affinity purified monoclonal antibody
<b>Synonyms:</b>	GPC3, MXR7, OCI-5
<b>Immunogen:</b>	A synthetic peptide corresponding to the central region of human glypican-3
<b>Cross Reactivity:</b>	(+) Glypican-3
<b>Species Reactivity:</b>	(+) Human
<b>Uniprot No.:</b>	P51654
<b>Form:</b>	Liquid
<b>Storage:</b>	2-8°C (as supplied)
<b>Stability:</b>	≥1 year
<b>Storage Buffer:</b>	PBS solution with 0.5% BSA and 0.03% ProClin™ 300
<b>Concentration:</b>	10 µl/Test, 0.1 mg/ml
<b>Clone:</b>	024
<b>Host:</b>	Rabbit
<b>Isotype:</b>	IgG
<b>Application:</b>	Flow cytometry (FC); the optimal working concentration/dilution should be determined empirically.

### Image



Flow cytometric analysis of Human GPC3 expression in HepG2 cells. Cells were stained with Glypican-3 Rabbit Monoclonal Antibody (PE). The fluorescence histogram was derived from gated events with the forward and side light-scatter characteristics of intact cells.

**WARNING**  
THIS PRODUCT IS FOR RESEARCH ONLY - NOT FOR HUMAN OR VETERINARY DIAGNOSTIC OR THERAPEUTIC USE.

**SAFETY DATA**  
This material should be considered hazardous until further information becomes available. Do not ingest, inhale, get in eyes, on skin, or on clothing. Wash thoroughly after handling. Before use, the user must review the complete Safety Data Sheet, which has been sent via email to your institution.

**WARRANTY AND LIMITATION OF REMEDY**  
Buyer agrees to purchase the material subject to Cayman's Terms and Conditions. Complete Terms and Conditions including Warranty and Limitation of Liability information can be found on our website.

Copyright Cayman Chemical Company, 09/11/2023

**CAYMAN CHEMICAL**

1180 EAST ELLSWORTH RD

ANN ARBOR, MI 48108 · USA

PHONE: [800] 364-9897

[734] 971-3335

FAX: [734] 971-3640

CUSTSERV@CAYMANCHEM.COM

WWW.CAYMANCHEM.COM

# PRODUCT INFORMATION



## Description

---

Glypican-3 (GPC3) is a membrane-bound heparan sulfate proteoglycan.<sup>1</sup> It is composed of a signal peptide for membrane translocation, a cysteine-rich domain that contains a proteolytic cleavage site for proprotein convertases, a stalk region that contains heparan sulfate attachment sites, and a signal sequence for glycosylphosphatidylinositol (GPI) attachment, which anchors it to the cell surface. GPC3 is ubiquitously expressed during embryonic development and is only expressed in select adult tissues, including gastric glands and kidney tubules.<sup>2,3</sup> It is involved in canonical and non-canonical Wnt signaling and binds to various Wnt ligands and Frizzled receptors.<sup>1,4</sup> GPC3-targeting antibodies induce antibody-dependent cellular cytotoxicity (ADCC) and reduce tumor growth in hepatocellular carcinoma (HCC) mouse xenograft models.<sup>5</sup> Hepatic levels of GPC3 are increased in patients with HCC.<sup>6</sup> Mutations in *GPC3* are associated with Simpson-Golabi-Behmel syndrome (SGBS), an X-linked condition characterized by pre- and post-natal overgrowth.<sup>2</sup> Cayman's Glypican-3 Rabbit Monoclonal Antibody (PE) is composed of a GPC3 monoclonal antibody conjugated to phycoerythrin (PE) and can be used for flow cytometry (FC).

## References

---

1. De Cat, B., Muyldermans, S.-Y., Coomans, C., *et al.* Processing by proprotein convertases is required for glypican-3 modulation of cell survival, Wnt signaling, and gastrulation movements. *J. Cell. Biol.* **163**(3), 625-635 (2003).
2. Pilia, G., Hughes-Benzie, R.M., MacKenzie, A., *et al.* Mutations in *GPC3*, a glypican gene, cause the Simpson-Golabi-Behmel overgrowth syndrome. *Nat. Genet.* **12**(3), 241-247 (1996).
3. Baumhoer, D., Tornillo, L., Stadlmann, S., *et al.* Glypican 3 expression in human nonneoplastic, preneoplastic, and neoplastic tissues: A tissue microarray analysis of 4,387 tissue samples. *Am. J. Clin. Pathol.* **129**(6), 899-906 (2008).
4. Capurro, M., Martin, T., Shi, W., *et al.* Glypican-3 binds to frizzled and plays a direct role in the stimulation of canonical Wnt signaling. *J. Cell. Sci.* **127** (Pt. 7), 1565-1575 (2014).
5. Ishiguro, T., Sugimoto, M., Kinoshita, Y., *et al.* Anti-glypican 3 antibody as a potential antitumor agent for human liver cancer. *Cancer Res.* **68**(23), 9832-9838 (2008).
6. Capurro, M., Wanless, I.R., Sherman, M., *et al.* Glypican-3: A novel serum and histochemical marker for hepatocellular carcinoma. *Gastroenterology* **125**(1), 89-97 (2003).

CAYMAN CHEMICAL  
1180 EAST ELLSWORTH RD  
ANN ARBOR, MI 48108 · USA  
PHONE: [800] 364-9897  
[734] 971-3335  
FAX: [734] 971-3640  
CUSTSERV@CAYMANCHEM.COM  
WWW.CAYMANCHEM.COM