



SZABO SCANDIC

Part of Europa Biosite

Produktinformation



Forschungsprodukte & Biochemikalien



Zellkultur & Verbrauchsmaterial



Diagnostik & molekulare Diagnostik



Laborgeräte & Service

Weitere Information auf den folgenden Seiten!
See the following pages for more information!



Lieferung & Zahlungsart

siehe unsere [Liefer- und Versandbedingungen](#)

Zuschläge

- Mindermengenzuschlag
- Trockeneiszuschlag
- Gefahrgutzuschlag
- Expressversand

SZABO-SCANDIC HandelsgmbH

Quellenstraße 110, A-1100 Wien

T. +43(0)1 489 3961-0

F. +43(0)1 489 3961-7

mail@szabo-scandic.com

www.szabo-scandic.com

[linkedin.com/company/szaboscandic](https://www.linkedin.com/company/szaboscandic) 

PRODUCT INFORMATION



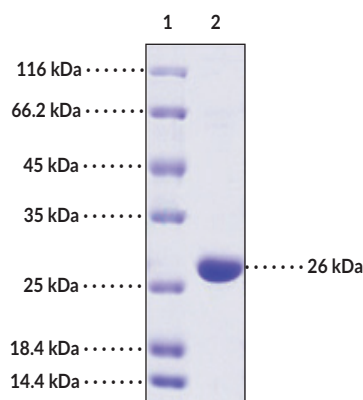
C-Reactive Protein (human, recombinant)

Item No. 37018

Overview and Properties

Synonym: CRP
Source: Recombinant human C-reactive protein expressed in HEK293 cells
Amino Acids: 19-224
Uniprot No.: P02741-1
Molecular Weight: 23 kDa
Storage: -80°C (as supplied)
Stability: ≥1 year
Purity: ≥90% estimated by SDS-PAGE
Supplied in: Lyophilized from 20 mM Tris, pH 8.0, 0.2 M sodium chloride, 5 mM calcium chloride
Endotoxin Testing: <1.0 EU/μg, determined by the LAL endotoxin assay
Information represents the product specifications. Batch specific analytical results are provided on each certificate of analysis.

Image



Lane 1: MW Markers
Lane 2: C-Reactive Protein

SDS-PAGE Analysis of C-Reactive Protein.

WARNING
THIS PRODUCT IS FOR RESEARCH ONLY - NOT FOR HUMAN OR VETERINARY DIAGNOSTIC OR THERAPEUTIC USE.

SAFETY DATA
This material should be considered hazardous until further information becomes available. Do not ingest, inhale, get in eyes, on skin, or on clothing. Wash thoroughly after handling. Before use, the user must review the complete Safety Data Sheet, which has been sent via email to your institution.

WARRANTY AND LIMITATION OF REMEDY
Buyer agrees to purchase the material subject to Cayman's Terms and Conditions. Complete Terms and Conditions including Warranty and Limitation of Liability information can be found on our website.

Copyright Cayman Chemical Company, 01/19/2023

CAYMAN CHEMICAL
1180 EAST ELLSWORTH RD
ANN ARBOR, MI 48108 · USA
PHONE: [800] 364-9897
[734] 971-3335
FAX: [734] 971-3640
CUSTSERV@CAYMANCHEM.COM
WWW.CAYMANCHEM.COM

PRODUCT INFORMATION



Description

C-Reactive protein (CRP) is an acute phase protein and a member of the pentraxin family.¹ It is composed of five protomers arranged symmetrically around a central pore and is primarily expressed in, and secreted by, the liver. CRP modulates endothelial function, increases protein levels of intracellular adhesion molecule-1 (ICAM-1), vascular cell adhesion molecule-1 (VCAM-1), and E-selectin, stimulates coagulation, mediates uptake of LDL into macrophages, and destabilizes atherosclerotic plaques.¹⁻⁵ In addition, CRP binds to phosphocholine on microbes in a calcium-dependent manner, acts as a ligand for receptors on phagocytic leukocytes, mediates activation of monocytes and macrophages *via* IL-6 and other cytokines, and assists in the complement pathway.^{1,6,7} CRP plasma levels increase in response to acute and chronic inflammatory conditions, and high plasma CRP concentrations are associated with an increased risk for atherosclerosis.^{8,9} Cayman's C-Reactive Protein (human, recombinant) consists of 206 amino acids, has a calculated molecular weight of 23 kDa, and a predicted N-terminus of Gln19 after signal peptide cleavage. By SDS-PAGE, under reducing conditions, the apparent molecular mass of the protein is 26 kDa due to glycosylation.

References

1. Volanakis, J.E. Human C-reactive protein: expression, structure, and function. *Mol. Immunol.* **38**, 189-197 (2001).
2. Pasceri, V., Willerson, J.T., and Yeh, E.T.H. Direct proinflammatory effect of C-reactive protein on human endothelial cells. *Circulation* **102**, 2165-2168 (2000).
3. Tracy, R.P. Inflammation in cardiovascular disease cart, horse, or both? *Circulation* **97**, 2000-2002 (1998).
4. Zwaka, T.P., Hombach, V., and Torzewski, J. C-reactive protein-mediated low density lipoprotein uptake by macrophages. Implications for atherosclerosis. *Circulation* **103**, 1194-1197 (2001).
5. de Ferranti, S. and Rifai, N. C-reactive protein and cardiovascular disease: a review of risk prediction and interventions. *Clin. Chim. Acta* **317**, 1-15 (2002).
6. Marnell, L.L., Mold, C., Volzer, M.A., *et al.* C-reactive protein binds to Fc γ RI in transfected COS cells. *J. Immunol.* **155**, 2185-2193 (1995).
7. Szalai, A.J., van Ginkel, F.W., Wang, Y., *et al.* Complement-dependent acute-phase expression of C-reactive protein and serum amyloid P-component. *J. Immunol.* **165**, 1030-1035 (2000).
8. Volanakis, J.E. Human C-reactive protein: expression, structure, and function. *Mol. Immunol.* **38**, 189-197 (2001).
9. Ridker, P.M. Clinical application of C-reactive protein for cardiovascular disease detection and prevention. *Circulation* **107**, 363-369 (2003).

CAYMAN CHEMICAL
1180 EAST ELLSWORTH RD
ANN ARBOR, MI 48108 · USA
PHONE: [800] 364-9897
[734] 971-3335
FAX: [734] 971-3640
CUSTSERV@CAYMANCHEM.COM
WWW.CAYMANCHEM.COM