



# SZABO SCANDIC

Part of Europa Biosite

## Produktinformation



Forschungsprodukte & Biochemikalien



Zellkultur & Verbrauchsmaterial



Diagnostik & molekulare Diagnostik



Laborgeräte & Service

Weitere Information auf den folgenden Seiten!  
See the following pages for more information!



### Lieferung & Zahlungsart

siehe unsere [Liefer- und Versandbedingungen](#)

### Zuschläge

- Mindermengenzuschlag
- Trockeneiszuschlag
- Gefahrgutzuschlag
- Expressversand

### SZABO-SCANDIC HandelsgmbH

Quellenstraße 110, A-1100 Wien

T. +43(0)1 489 3961-0

F. +43(0)1 489 3961-7

[mail@szabo-scandic.com](mailto:mail@szabo-scandic.com)

[www.szabo-scandic.com](http://www.szabo-scandic.com)

[linkedin.com/company/szaboscandic](https://www.linkedin.com/company/szaboscandic) 

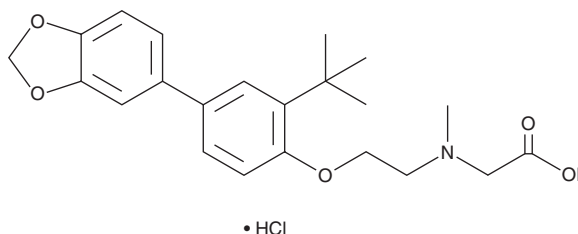
# PRODUCT INFORMATION



## LY2365109 (hydrochloride)

Item No. 37427

**CAS Registry No.:** 1779796-27-8  
**Formal Name:** N-[2-[4-(1,3-benzodioxol-5-yl)-2-(1,1-dimethylethyl)phenoxy]ethyl]-N-methyl-glycine, monohydrochloride  
**MF:** C<sub>22</sub>H<sub>27</sub>NO<sub>5</sub> • HCl  
**FW:** 421.9  
**Purity:** ≥95%  
**Supplied as:** A solid  
**Storage:** -20°C  
**Stability:** ≥4 years



Information represents the product specifications. Batch specific analytical results are provided on each certificate of analysis.

### Laboratory Procedures

LY2365109 (hydrochloride) is supplied as a solid. A stock solution may be made by dissolving the LY2365109 (hydrochloride) in the solvent of choice, which should be purged with an inert gas. LY2365109 (hydrochloride) is slightly soluble in DMSO.

### Description

LY2365109 is an inhibitor of glycine transporter 1a (GlyT1a; IC<sub>50</sub> = 15.8 nM in BE2-C cells expressing the human transporter).<sup>1</sup> It is selective for GlyT1a over GlyT2 (IC<sub>50</sub> = >30 μM in RD cells expressing the human transporter). LY2365109 (10 mg/kg) induces locomotor hyperactivity, impaired gait, compulsive walking, and labored breathing, as well as impairs the ability to stand, in rats.<sup>1</sup> It also prevents maximal electroshock-induced acute seizures in mice and decreases the number of seizures in an electroshock-induced rat model of chronic epilepsy when administered at doses of 30 and 10 mg/kg, respectively.<sup>2</sup>

### References

1. Perry, K.W., Falcone, J.F., Fell, M.J., *et al.* Neurochemical and behavioral profiling of the selective GlyT1 inhibitors ALX5407 and LY2365109 indicate a preferential action in caudal vs. cortical brain areas. *Neuropharmacology* **55(5)**, 743-754 (2008).
2. Shen, H.-Y., van Vliet, E.A., Bright, K.-A., *et al.* Glycine transporter 1 is a target for the treatment of epilepsy. *Neuropharmacology* **99**, 554-565 (2015).

#### WARNING

THIS PRODUCT IS FOR RESEARCH ONLY - NOT FOR HUMAN OR VETERINARY DIAGNOSTIC OR THERAPEUTIC USE.

#### SAFETY DATA

This material should be considered hazardous until further information becomes available. Do not ingest, inhale, get in eyes, on skin, or on clothing. Wash thoroughly after handling. Before use, the user must review the complete Safety Data Sheet, which has been sent via email to your institution.

#### WARRANTY AND LIMITATION OF REMEDY

Buyer agrees to purchase the material subject to Cayman's Terms and Conditions. Complete Terms and Conditions including Warranty and Limitation of Liability information can be found on our website.

Copyright Cayman Chemical Company, 05/16/2023

#### CAYMAN CHEMICAL

1180 EAST ELLSWORTH RD  
ANN ARBOR, MI 48108 · USA

**PHONE:** [800] 364-9897  
[734] 971-3335

**FAX:** [734] 971-3640

CUSTSERV@CAYMANCHEM.COM  
WWW.CAYMANCHEM.COM