



# SZABO SCANDIC

Part of Europa Biosite

## Produktinformation



Forschungsprodukte & Biochemikalien



Zellkultur & Verbrauchsmaterial



Diagnostik & molekulare Diagnostik



Laborgeräte & Service

Weitere Information auf den folgenden Seiten!  
See the following pages for more information!



### Lieferung & Zahlungsart

siehe unsere [Liefer- und Versandbedingungen](#)

### Zuschläge

- Mindermengenzuschlag
- Trockeneiszuschlag
- Gefahrgutzuschlag
- Expressversand

### SZABO-SCANDIC HandelsgmbH

Quellenstraße 110, A-1100 Wien

T. +43(0)1 489 3961-0

F. +43(0)1 489 3961-7

[mail@szabo-scandic.com](mailto:mail@szabo-scandic.com)

[www.szabo-scandic.com](http://www.szabo-scandic.com)

[linkedin.com/company/szaboscandic](https://www.linkedin.com/company/szaboscandic) 

# PRODUCT INFORMATION



## WaTx (36-68) (scorpion) (trifluoroacetate salt)

Item No. 37495

**Formal Name:** L-alanyl-L-seryl-L-prolyl-L-glutamyl-L-glutamyl-L-alanyl-L-lysyl-L-tyrosyl-L-cysteinyl-L-tyrosyl-L- $\alpha$ -glutamyl-L-glutamyl-L-cysteinyl-L-asparagyl-L-valyl-L-asparagyl-L-lysyl-L-valyl-L-prolyl-L-phenylalanyl-L- $\alpha$ -aspartyl-L-glutamyl-L-cysteinyl-L-tyrosyl-L-glutamyl-L-methionyl-L-cysteinyl-L-seryl-L-prolyl-L-leucyl-L- $\alpha$ -glutamyl-L-arginyl-L-serine, trifluoroacetate salt

**Synonym:** Wasabi Receptor Toxin (36-68)

**Peptide Sequence:** ASPQQAKYCYEQCNVNVKVPFDQCYQMCSPLERS-OH

**MF:** C<sub>164</sub>H<sub>245</sub>N<sub>45</sub>O<sub>53</sub>S<sub>5</sub> • XCF<sub>3</sub>COOH

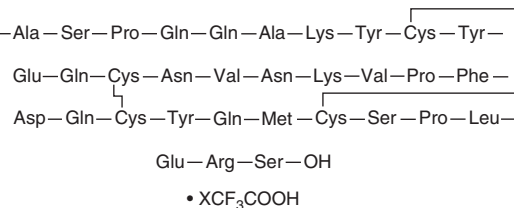
**FW:** 3,855.3

**Purity:** ≥95%

**Supplied as:** A solid

**Storage:** -20°C

**Stability:** ≥4 years



Information represents the product specifications. Batch specific analytical results are provided on each certificate of analysis.

### Laboratory Procedures

Wasabi receptor toxin (WaTx) (36-68) (scorpion) (trifluoroacetate salt) is supplied as a solid. A stock solution may be made by dissolving the WaTx (36-68) (scorpion) (trifluoroacetate salt) in water. We do not recommend storing the aqueous solution for more than one day.

### Description

WaTx (36-68) is a cell-penetrating peptide that corresponds to the mature toxin sequence and is an activator of transient receptor potential ankyrin 1 (TRPA1).<sup>1</sup> It selectively induces currents in HEK293T cells expressing human TRPA1 (EC<sub>50</sub> = 15 nM) over cells expressing human TRP melastatin 8 (TRPM8) or human TRP vanilloid 1 (TRPV1) at 100 nM or rat voltage-gated potassium channel 1.2 (K<sub>v</sub>1.2), rat K<sub>v</sub>2.1, rat K<sub>v</sub>3.1, or rat K<sub>v</sub>4.3 at 1,000 nM. WaTx induces nocifensive behavior in wild-type but not *Trpa1*<sup>-/-</sup> mice.

### Reference

1. King, J.V.L., Emrick, J.J., Kelly, M.J.S., *et al.* A cell-penetrating scorpion toxin enables mode-specific modulation of TRPA1 and pain. *Cell* **178**(6), 1362-1374 (2019).

#### WARNING

THIS PRODUCT IS FOR RESEARCH ONLY - NOT FOR HUMAN OR VETERINARY DIAGNOSTIC OR THERAPEUTIC USE.

#### SAFETY DATA

This material should be considered hazardous until further information becomes available. Do not ingest, inhale, get in eyes, on skin, or on clothing. Wash thoroughly after handling. Before use, the user must review the complete Safety Data Sheet, which has been sent via email to your institution.

#### WARRANTY AND LIMITATION OF REMEDY

Buyer agrees to purchase the material subject to Cayman's Terms and Conditions. Complete Terms and Conditions including Warranty and Limitation of Liability information can be found on our website.

Copyright Cayman Chemical Company, 01/11/2024

#### CAYMAN CHEMICAL

1180 EAST ELLSWORTH RD

ANN ARBOR, MI 48108 · USA

**PHONE:** [800] 364-9897

[734] 971-3335

**FAX:** [734] 971-3640

CUSTSERV@CAYMANCHEM.COM

WWW.CAYMANCHEM.COM