



# SZABO SCANDIC

Part of Europa Biosite

## Produktinformation



Forschungsprodukte & Biochemikalien



Zellkultur & Verbrauchsmaterial



Diagnostik & molekulare Diagnostik



Laborgeräte & Service

Weitere Information auf den folgenden Seiten!  
See the following pages for more information!



### Lieferung & Zahlungsart

siehe unsere [Liefer- und Versandbedingungen](#)

### Zuschläge

- Mindermengenzuschlag
- Trockeneiszuschlag
- Gefahrgutzuschlag
- Expressversand

### SZABO-SCANDIC HandelsgmbH

Quellenstraße 110, A-1100 Wien

T. +43(0)1 489 3961-0

F. +43(0)1 489 3961-7

[mail@szabo-scandic.com](mailto:mail@szabo-scandic.com)

[www.szabo-scandic.com](http://www.szabo-scandic.com)

[linkedin.com/company/szaboscandic](https://www.linkedin.com/company/szaboscandic) 

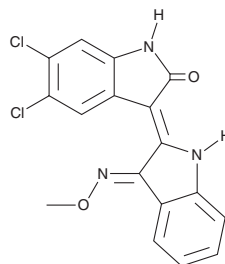
# PRODUCT INFORMATION



**KY 19382**

Item No. 37579

**CAS Registry No.:** 2226664-93-1  
**Formal Name:** 5,6-dichloro-3-[1,3-dihydro-3-(methoxyimino)-2H-indol-2-ylidene]-1,3-dihydro-2H-indol-2-one  
**MF:** C<sub>17</sub>H<sub>11</sub>Cl<sub>2</sub>N<sub>3</sub>O<sub>2</sub>  
**FW:** 360.2  
**Purity:** ≥95%  
**Supplied as:** A solid  
**Storage:** -20°C  
**Stability:** ≥4 years



Information represents the product specifications. Batch specific analytical results are provided on each certificate of analysis.

## Laboratory Procedures

KY 19382 is supplied as a solid. A stock solution may be made by dissolving the KY 19382 in the solvent of choice, which should be purged with an inert gas. KY 19382 is soluble in DMSO.

## Description

KY 19382 is an inhibitor of the protein-protein interaction between CXXC-type zinc finger protein 5 (CF5) and Dishevelled (Dvl; IC<sub>50</sub> = 19 nM).<sup>1</sup> It is also an inhibitor of glycogen synthase kinase 3β (GSK3β; IC<sub>50</sub> = 10 nM). KY 19382 (100 nM) increases expression of the mRNA encoding Wnt1-inducible signaling pathway protein 1 (WISP-1) and Axin2, markers of Wnt pathway activation, in ATDC-5 chondrogenic cells. It increases nuclear and cytosolic levels of β-catenin in ATDC-5 cells when used at a concentration of 100 nM. KY 19382 (0.1 mg/kg per day) increases bone plate growth and tibia length in adolescent mice.

## Reference

1. Choi, S., Kim, H.-Y., Cha, P.-H., *et al.* CXXC5 mediates growth plate senescence and is a target for enhancement of longitudinal bone growth. *Life Sci. Alliance* **2(2)**, e201800254 (2019).

### WARNING

THIS PRODUCT IS FOR RESEARCH ONLY - NOT FOR HUMAN OR VETERINARY DIAGNOSTIC OR THERAPEUTIC USE.

### SAFETY DATA

This material should be considered hazardous until further information becomes available. Do not ingest, inhale, get in eyes, on skin, or on clothing. Wash thoroughly after handling. Before use, the user must review the [complete](#) Safety Data Sheet, which has been sent via email to your institution.

### WARRANTY AND LIMITATION OF REMEDY

Buyer agrees to purchase the material subject to Cayman's Terms and Conditions. Complete Terms and Conditions including Warranty and Limitation of Liability information can be found on our website.

Copyright Cayman Chemical Company, 08/17/2023

## CAYMAN CHEMICAL

1180 EAST ELLSWORTH RD  
ANN ARBOR, MI 48108 · USA

**PHONE:** [800] 364-9897  
[734] 971-3335

**FAX:** [734] 971-3640

CUSTSERV@CAYMANCHEM.COM  
[WWW.CAYMANCHEM.COM](http://WWW.CAYMANCHEM.COM)