



SZABO SCANDIC

Part of Europa Biosite

Produktinformation



Forschungsprodukte & Biochemikalien



Zellkultur & Verbrauchsmaterial



Diagnostik & molekulare Diagnostik



Laborgeräte & Service

Weitere Information auf den folgenden Seiten!
See the following pages for more information!



Lieferung & Zahlungsart

siehe unsere [Liefer- und Versandbedingungen](#)

Zuschläge

- Mindermengenzuschlag
- Trockeneiszuschlag
- Gefahrgutzuschlag
- Expressversand

SZABO-SCANDIC HandelsgmbH

Quellenstraße 110, A-1100 Wien

T. +43(0)1 489 3961-0

F. +43(0)1 489 3961-7

mail@szabo-scandic.com

www.szabo-scandic.com

[linkedin.com/company/szaboscandic](https://www.linkedin.com/company/szaboscandic) 

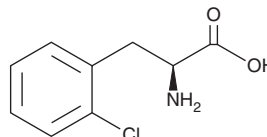
PRODUCT INFORMATION



2-Chloro-L-phenylalanine

Item No. 38972

CAS Registry No.: 103616-89-3
Formal Name: (S)-2-amino-3-(2-chlorophenyl)propanoic acid
MF: $C_9H_9ClNO_2$
FW: 199.6
Purity: $\geq 98\%$
Supplied as: A solid
Storage: $-20^\circ C$
Stability: ≥ 4 years



Information represents the product specifications. Batch specific analytical results are provided on each certificate of analysis.

Laboratory Procedures

2-Chloro-L-phenylalanine is supplied as a solid. A stock solution may be made by dissolving the 2-chloro-L-phenylalanine in the solvent of choice, which should be purged with an inert gas. 2-Chloro-L-phenylalanine is slightly soluble in ethanol.

Description

2-Chloro-L-phenylalanine is a non-proteinogenic amino acid and a chlorinated derivative of the essential amino acid L-phenylalanine (Item No. 31498).¹ It has been used as an internal standard in metabolomics studies.²

References

1. Lovelock, S.L. and Turner, N.J. Bacterial *Anabaena variabilis* phenylalanine ammonia lyase: A biocatalyst with broad substrate specificity. *Bioorg. Med. Chem.* **22(20)**, 5555-5557 (2014).
2. Ye, Y., Wu, J., Quan, J., *et al.* Lipids and organic acids in three gut locations affect feed efficiency of commercial pigs as revealed by LC-MS-based metabolomics. *Sci. Rep.* **11(1)**, (2021).

WARNING

THIS PRODUCT IS FOR RESEARCH ONLY - NOT FOR HUMAN OR VETERINARY DIAGNOSTIC OR THERAPEUTIC USE.

SAFETY DATA

This material should be considered hazardous until further information becomes available. Do not ingest, inhale, get in eyes, on skin, or on clothing. Wash thoroughly after handling. Before use, the user must review the [complete](#) Safety Data Sheet, which has been sent via email to your institution.

WARRANTY AND LIMITATION OF REMEDY

Buyer agrees to purchase the material subject to Cayman's Terms and Conditions. Complete Terms and Conditions including Warranty and Limitation of Liability information can be found on our website.

Copyright Cayman Chemical Company, 08/24/2023

CAYMAN CHEMICAL

1180 EAST ELLSWORTH RD
ANN ARBOR, MI 48108 · USA

PHONE: [800] 364-9897

[734] 971-3335

FAX: [734] 971-3640

CUSTSERV@CAYMANCHEM.COM

WWW.CAYMANCHEM.COM