



# SZABO SCANDIC

Part of Europa Biosite

## Produktinformation



Forschungsprodukte & Biochemikalien



Zellkultur & Verbrauchsmaterial



Diagnostik & molekulare Diagnostik



Laborgeräte & Service

Weitere Information auf den folgenden Seiten!  
See the following pages for more information!



### Lieferung & Zahlungsart

siehe unsere [Liefer- und Versandbedingungen](#)

### Zuschläge

- Mindermengenzuschlag
- Trockeneiszuschlag
- Gefahrgutzuschlag
- Expressversand

### SZABO-SCANDIC HandelsgmbH

Quellenstraße 110, A-1100 Wien

T. +43(0)1 489 3961-0

F. +43(0)1 489 3961-7

[mail@szabo-scandic.com](mailto:mail@szabo-scandic.com)

[www.szabo-scandic.com](http://www.szabo-scandic.com)

[linkedin.com/company/szaboscandic](https://www.linkedin.com/company/szaboscandic) 

# PRODUCT INFORMATION



## (±)15,16-DiHODE

Item No. 39902

**Formal Name:** 15S,16S-dihydroxyoctadeca-9Z,12Z-dienoic acid

**Synonyms:** FA 18:2;O2,  
(±)15,16-Dihydroxyoctadecadienoic Acid,  
(±)15,16-dihydroxy-*cis*-9,12-Octadecadienoic Acid, (±)15,16-dihydroxy-9(Z),12(Z)-ODE

**MF:** C<sub>18</sub>H<sub>32</sub>O<sub>4</sub>

**FW:** 312.4

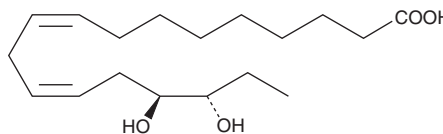
**Purity:** ≥95%

**Supplied as:** A solution in ethanol

**Storage:** -20°C

**Stability:** ≥3 years

Information represents the product specifications. Batch specific analytical results are provided on each certificate of analysis.



### Laboratory Procedures

(±)15,16-DiHODE is supplied as a solution in ethanol. To change the solvent, simply evaporate the ethanol under a gentle stream of nitrogen and immediately add the solvent of choice. (±)15,16-DiHODE is sparingly soluble (1-10 mg/ml) in chloroform, acetonitrile, and dichloromethane.

### Description

(±)15,16-DiHODE is an  $\alpha$ -linolenic acid-derived oxylipin.<sup>1</sup> It is formed from  $\alpha$ -linolenic acid (Item Nos. 90210 | 21910) by cytochrome P450s (CYPs). Corpora luteal levels of 15,16-DiHODE are increased in pregnant cattle.<sup>2</sup>

### References

- Schuchardt, J.P., Schmidt, S., Kressel, G., *et al.* Comparison of free serum oxylipin concentrations in hyper- vs. normolipidemic men. *Prostaglandins Leukot. Essent. Fatty Acids* **89(1)**, 19-29 (2013).
- Owen, M.P.T., Northrop, E.J., Rich, J.J.J., *et al.* Oxylipin concentrations in bovine corpora lutea during maternal recognition of pregnancy. *Theriogenology* **142**, 384-389 (2020).

#### WARNING

THIS PRODUCT IS FOR RESEARCH ONLY - NOT FOR HUMAN OR VETERINARY DIAGNOSTIC OR THERAPEUTIC USE.

#### SAFETY DATA

This material should be considered hazardous until further information becomes available. Do not ingest, inhale, get in eyes, on skin, or on clothing. Wash thoroughly after handling. Before use, the user must review the [complete](#) Safety Data Sheet, which has been sent via email to your institution.

#### WARRANTY AND LIMITATION OF REMEDY

Buyer agrees to purchase the material subject to Cayman's Terms and Conditions. Complete Terms and Conditions including Warranty and Limitation of Liability information can be found on our website.

Copyright Cayman Chemical Company, 03/26/2024

#### CAYMAN CHEMICAL

1180 EAST ELLSWORTH RD  
ANN ARBOR, MI 48108 · USA

**PHONE:** [800] 364-9897  
[734] 971-3335

**FAX:** [734] 971-3640

CUSTSERV@CAYMANCHEM.COM  
WWW.CAYMANCHEM.COM