



SZABO SCANDIC

Part of Europa Biosite

Produktinformation



Forschungsprodukte & Biochemikalien



Zellkultur & Verbrauchsmaterial



Diagnostik & molekulare Diagnostik



Laborgeräte & Service

Weitere Information auf den folgenden Seiten!
See the following pages for more information!



Lieferung & Zahlungsart

siehe unsere [Liefer- und Versandbedingungen](#)

Zuschläge

- Mindermengenzuschlag
- Trockeneiszuschlag
- Gefahrgutzuschlag
- Expressversand

SZABO-SCANDIC HandelsgmbH

Quellenstraße 110, A-1100 Wien

T. +43(0)1 489 3961-0

F. +43(0)1 489 3961-7

mail@szabo-scandic.com

www.szabo-scandic.com

[linkedin.com/company/szaboscandic](https://www.linkedin.com/company/szaboscandic) 

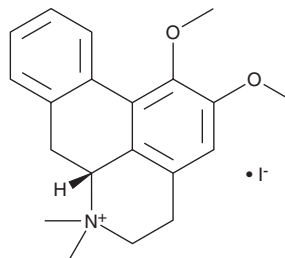
PRODUCT INFORMATION



N-Methylnuciferine (iodide)

Item No. 40276

CAS Registry No.: 53098-68-3
Formal Name: (R)-5,6,6a,7-tetrahydro-1,2-dimethoxy-6,6-dimethyl-4H-dibenzo[de,g]quinolinium, monoiodide
MF: C₂₀H₂₄NO₂ • I
FW: 437.3
Purity: ≥98%
Supplied as: A solid
Storage: -20°C
Stability: ≥4 years
Item Origin: Plant/*Nelumbo nucifera* Gaertn.



Information represents the product specifications. Batch specific analytical results are provided on each certificate of analysis.

Laboratory Procedures

N-Methylnuciferine (iodide) is supplied as a solid. A stock solution may be made by dissolving the N-methylnuciferine (iodide) in the solvent of choice, which should be purged with an inert gas. N-Methylnuciferine (iodide) is soluble in acetonitrile and methanol.

Description

N-Methylnuciferine is an aporphine alkaloid that has been found in *A. cherimola* and has diverse biological activities.^{1,2} It scavenges DPPH (Item No. 14805) radicals (IC₅₀ = 711.76 µg/ml) and inhibits α-glucosidase and α-amylase (IC₅₀s = 2,627.78 and 1,818.18 µg/ml, respectively) in cell-free assays.¹ N-Methylnuciferine (20 µM) reduces LPS-induced nitric oxide (NO) production in BV-2 microglia.²

References

1. Galarce-Bustos, O., Obregón, C., Vallejos-Almirall, A., *et al.* Application of effect-directed analysis using TLC-bioautography for rapid isolation and identification of antidiabetic compounds from the leaves of *Annona cherimola* Mill. *Phytochem. Anal.* **34(8)**, 970-983 (2023).
2. Chen, S., Guo, W., Qi, X., *et al.* Natural alkaloids from *lotus plumule* ameliorate lipopolysaccharide-induced depression-like behavior: Integrating network pharmacology and molecular mechanism evaluation. *Food Funct.* **10(9)**, 6062-6073 (2019).

WARNING

THIS PRODUCT IS FOR RESEARCH ONLY - NOT FOR HUMAN OR VETERINARY DIAGNOSTIC OR THERAPEUTIC USE.

SAFETY DATA

This material should be considered hazardous until further information becomes available. Do not ingest, inhale, get in eyes, on skin, or on clothing. Wash thoroughly after handling. Before use, the user must review the [complete](#) Safety Data Sheet, which has been sent via email to your institution.

WARRANTY AND LIMITATION OF REMEDY

Buyer agrees to purchase the material subject to Cayman's Terms and Conditions. Complete Terms and Conditions including Warranty and Limitation of Liability information can be found on our website.

Copyright Cayman Chemical Company, 03/06/2024

CAYMAN CHEMICAL

1180 EAST ELLSWORTH RD
ANN ARBOR, MI 48108 · USA

PHONE: [800] 364-9897
[734] 971-3335

FAX: [734] 971-3640

CUSTSERV@CAYMANCHEM.COM
WWW.CAYMANCHEM.COM