



# SZABO SCANDIC

Part of Europa Biosite

## Produktinformation



Forschungsprodukte & Biochemikalien



Zellkultur & Verbrauchsmaterial



Diagnostik & molekulare Diagnostik



Laborgeräte & Service

Weitere Information auf den folgenden Seiten!  
See the following pages for more information!



### Lieferung & Zahlungsart

siehe unsere [Liefer- und Versandbedingungen](#)

### Zuschläge

- Mindermengenzuschlag
- Trockeneiszuschlag
- Gefahrgutzuschlag
- Expressversand

### SZABO-SCANDIC HandelsgmbH

Quellenstraße 110, A-1100 Wien

T. +43(0)1 489 3961-0

F. +43(0)1 489 3961-7

[mail@szabo-scandic.com](mailto:mail@szabo-scandic.com)

[www.szabo-scandic.com](http://www.szabo-scandic.com)

[linkedin.com/company/szaboscandic](https://www.linkedin.com/company/szaboscandic) 

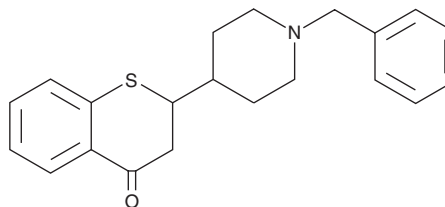
# PRODUCT INFORMATION



## WQ 1

Item No. 40462

**CAS Registry No.:** 1204401-49-9  
**Formal Name:** 2,3-dihydro-2-[1-(phenylmethyl)-4-piperidinyl]-4H-1-benzothiopyran-4-one  
**MF:** C<sub>21</sub>H<sub>23</sub>NOS  
**FW:** 337.5  
**Purity:** ≥98%  
**Supplied as:** A solid  
**Storage:** -20°C  
**Stability:** ≥4 years



Information represents the product specifications. Batch specific analytical results are provided on each certificate of analysis.

### Laboratory Procedures

WQ 1 is supplied as a solid. A stock solution may be made by dissolving the WQ 1 in the solvent of choice, which should be purged with an inert gas. WQ 1 is soluble in acetonitrile and DMSO.

### Description

WQ 1 is an antagonist of sigma non-opioid intracellular receptor 1 ( $\sigma_1$  receptor;  $K_i = 0.01$  nM).<sup>1</sup> It is selective for the  $\sigma_1$  receptor over the  $\sigma_2$  receptor and dopamine transporter (DAT;  $K_i$ s = 295.12 and 1,585 nM, respectively). WQ 1 (10  $\mu$ M) decreases proliferation of MCF-7 breast cancer and MCF-7/adr multidrug-resistant breast cancer cells.<sup>2</sup> It induces cell cycle arrest at the G<sub>0</sub>/G<sub>1</sub> phase in MCF-7 and MCF-7/adr cancer cells and apoptosis in MCF-7/adr cancer cells. WQ 1 (1 mg/kg) increases the duration of morphine-induced latency to tail withdrawal in the tail-flick test in mice when administered 30 minutes prior to the test. WQ 1 (3 or 7 mg/kg) reduces stress-induced food consumption in rats.<sup>1</sup>

### References

1. Del Bello, F., Micioni Di Bonaventura, M.V., Bonifazi, A., *et al.* Investigation of the role of chirality in the interaction with  $\sigma$  receptors and effect on binge eating episode of a potent  $\sigma_1$  antagonist analogue of spipethiane. *ACS Chem. Neurosci.* **10**(8), 3391-3397 (2019).
2. Piergentili, A., Amantini, C., Del Bello, F., *et al.* Novel highly potent and selective sigma 1 receptor antagonists related to spipethiane. *J. Med. Chem.* **53**(3), 1261-1269 (2010).

#### WARNING

THIS PRODUCT IS FOR RESEARCH ONLY - NOT FOR HUMAN OR VETERINARY DIAGNOSTIC OR THERAPEUTIC USE.

#### SAFETY DATA

This material should be considered hazardous until further information becomes available. Do not ingest, inhale, get in eyes, on skin, or on clothing. Wash thoroughly after handling. Before use, the user must review the [complete](#) Safety Data Sheet, which has been sent via email to your institution.

#### WARRANTY AND LIMITATION OF REMEDY

Buyer agrees to purchase the material subject to Cayman's Terms and Conditions. Complete Terms and Conditions including Warranty and Limitation of Liability information can be found on our website.

Copyright Cayman Chemical Company, 03/07/2024

#### CAYMAN CHEMICAL

1180 EAST ELLSWORTH RD  
ANN ARBOR, MI 48108 · USA

**PHONE:** [800] 364-9897  
[734] 971-3335

**FAX:** [734] 971-3640

CUSTSERV@CAYMANCHEM.COM  
WWW.CAYMANCHEM.COM