



SZABO SCANDIC

Part of Europa Biosite

Produktinformation



Forschungsprodukte & Biochemikalien



Zellkultur & Verbrauchsmaterial



Diagnostik & molekulare Diagnostik



Laborgeräte & Service

Weitere Information auf den folgenden Seiten!
See the following pages for more information!



Lieferung & Zahlungsart

siehe unsere [Liefer- und Versandbedingungen](#)

Zuschläge

- Mindermengenzuschlag
- Trockeneiszuschlag
- Gefahrgutzuschlag
- Expressversand

SZABO-SCANDIC HandelsgmbH

Quellenstraße 110, A-1100 Wien

T. +43(0)1 489 3961-0

F. +43(0)1 489 3961-7

mail@szabo-scandic.com

www.szabo-scandic.com

[linkedin.com/company/szaboscandic](https://www.linkedin.com/company/szaboscandic) 

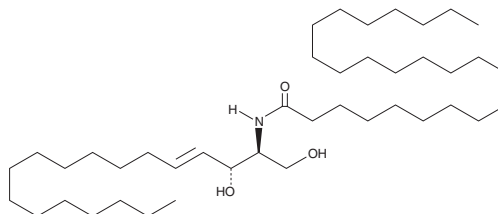
PRODUCT INFORMATION



C24 Ceramide (d18:1/24:0)

Item No. 62535

CAS Registry No.: 34435-05-7
Formal Name: N-[(1S,2R,3E)-2-hydroxy-1-(hydroxymethyl)-3-heptadecen-1-yl]-tetracosanamide
Synonyms: C24 Ceramide, Ceramide (d18:1/24:0), Cer(d18:1/24:0), Lignoceric Ceramide, N-Lignoceroyl-D-erythro-Sphingosine
MF: C₄₂H₈₃NO₃
FW: 650.1
Purity: ≥98%
Supplied as: A crystalline solid
Storage: -20°C
Stability: ≥1 year



Information represents the product specifications. Batch specific analytical results are provided on each certificate of analysis.

Laboratory Procedures

C24 Ceramide (d18:1/24:0) is supplied as a crystalline solid. A stock solution may be made by dissolving the C24 ceramide (d18:1/24:0) in the solvent of choice. C24 Ceramide (d18:1/24:0) is slightly soluble in chloroform (heated) and methanol (heated), which should be purged with an inert gas.

Description

This ceramide has a sphingosine backbone of 18 carbons, but it may contain up to 10% which has a 20 carbon backbone. This is a natural characteristic of sphingosine and will not affect biological activity. Production of ceramide occurs upon hydrolysis of sphingomyelin by a specific isoform of PLC, appropriately named sphingomyelinase.¹ C24 Ceramide (d18:1/24:0) is one of the most abundant naturally occurring ceramides.²⁻⁴ Ceramides mediate many diverse biological activities, as has been demonstrated in studies utilizing cell-permeable ceramide analogs. A few of the processes regulated by ceramides include apoptosis, cell differentiation, proliferation of smooth muscle cells, and inhibition of the mitochondrial respiratory chain.⁵⁻⁷

References

1. Perry, D.K., Obeid, L.M., and Hannun, Y.A. *Trends Cardiovasc. Med.* **6**, 158-162 (1996).
2. Gu, Q., Kerwin, J.L., Watts, J.D., et al. *Anal. Biochem.* **244**, 347-356 (1997).
3. Clayton, R.B., Cooper, J.M., Curstedt, T., et al. *J. Lipid Res.* **15**, 557-562 (1974).
4. Krivit, W. and Hammarström, S. *J. Lipid Res.* **13**, 525-530 (1972).
5. Testi, R. *Trends Biochem. Sci.* **21**, 468-471 (1996).
6. Augé, N., Andrieu, N., Nègre-Salvayre, A., et al. *J. Biol. Chem.* **271**, 19251-19255 (1996).
7. Gudz, T.I., Tserng, K.-Y., and Hoppel, C.L. *J. Biol. Chem.* **272**, 24154-24158 (1997).

WARNING

THIS PRODUCT IS FOR RESEARCH ONLY - NOT FOR HUMAN OR VETERINARY DIAGNOSTIC OR THERAPEUTIC USE.

SAFETY DATA

This material should be considered hazardous until further information becomes available. Do not ingest, inhale, get in eyes, on skin, or on clothing. Wash thoroughly after handling. Before use, the user must review the complete Safety Data Sheet, which has been sent via email to your institution.

WARRANTY AND LIMITATION OF REMEDY

Buyer agrees to purchase the material subject to Cayman's Terms and Conditions. Complete Terms and Conditions including Warranty and Limitation of Liability information can be found on our website.

Copyright Cayman Chemical Company, 07/11/2018

CAYMAN CHEMICAL

1180 EAST ELLSWORTH RD
ANN ARBOR, MI 48108 · USA

PHONE: [800] 364-9897

[734] 971-3335

FAX: [734] 971-3640

CUSTSERV@CAYMANCHEM.COM
WWW.CAYMANCHEM.COM