



# SZABO SCANDIC

Part of Europa Biosite

## Produktinformation



Forschungsprodukte & Biochemikalien



Zellkultur & Verbrauchsmaterial



Diagnostik & molekulare Diagnostik



Laborgeräte & Service

Weitere Information auf den folgenden Seiten!  
See the following pages for more information!



### Lieferung & Zahlungsart

siehe unsere [Liefer- und Versandbedingungen](#)

### Zuschläge

- Mindermengenzuschlag
- Trockeneiszuschlag
- Gefahrgutzuschlag
- Expressversand

### SZABO-SCANDIC HandelsgmbH

Quellenstraße 110, A-1100 Wien

T. +43(0)1 489 3961-0

F. +43(0)1 489 3961-7

[mail@szabo-scandic.com](mailto:mail@szabo-scandic.com)

[www.szabo-scandic.com](http://www.szabo-scandic.com)

[linkedin.com/company/szaboscandic](https://www.linkedin.com/company/szaboscandic) 

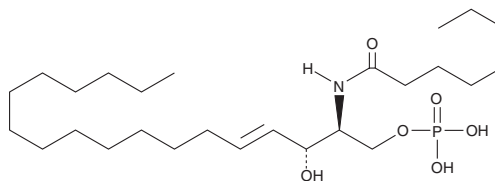
# PRODUCT INFORMATION



## C8 Ceramide-1-phosphate (d18:1/8:0)

Item No. 62547

**CAS Registry No.:** 158983-53-0  
**Formal Name:** N-octanoylsphingosine-1-phosphate  
**Synonyms:** C8 Ceramide-1-phosphate, Ceramide-1-phosphate (d18:1/8:0), CerP(d18:1/8:0), N-octanoyl-Ceramide-1-phosphate  
**MF:** C<sub>26</sub>H<sub>52</sub>NO<sub>6</sub>P  
**FW:** 505.7  
**Purity:** ≥90%  
**Supplied as:** A neat solid  
**Storage:** -20°C  
**Stability:** ≥ 1 year



Information represents the product specifications. Batch specific analytical results are provided on each certificate of analysis.

### Laboratory Procedures

C8 ceramide-1-phosphate (d18:1/8:0) is supplied as a neat solid. It is sparingly soluble in organic solvents such as ethanol, DMSO, and dimethyl formamide. For maximum solubility in aqueous buffers, C8 ceramide-1-phosphate (d18:1/8:0) should first be dissolved in 10 mM NaOH at pH >7.5 (solubility is approximately 12 mg/ml) and then diluted with PBS (pH 7.2) to achieve the desired concentration or pH. We do not recommend storing the aqueous solution for more than one day.

### Description

C8 ceramide-1-phosphate is a short-chain analog of the naturally occurring ceramide-1-phosphate. The effects of C8 ceramide-1-phosphate are essentially the opposite of C8 ceramide; it induces DNA synthesis and cell division. The effects of C8 ceramide-1-phosphate can be attenuated by simultaneous treatment with C2 or C8 ceramide.<sup>1</sup>

### Reference

1. Gomez-Muñoz, A., Duffy, P.A., Martin, A., *et al.* Short-chain ceramide-1-phosphates are novel stimulators of DNA synthesis and cell division: Antagonism by cell-permeable ceramides. *Mol. Pharmacol.* **47(5)**, 883-889 (1995).

#### WARNING

THIS PRODUCT IS FOR RESEARCH ONLY - NOT FOR HUMAN OR VETERINARY DIAGNOSTIC OR THERAPEUTIC USE.

#### SAFETY DATA

This material should be considered hazardous until further information becomes available. Do not ingest, inhale, get in eyes, on skin, or on clothing. Wash thoroughly after handling. Before use, the user must review the [complete](#) Safety Data Sheet, which has been sent via email to your institution.

#### WARRANTY AND LIMITATION OF REMEDY

Buyer agrees to purchase the material subject to Cayman's Terms and Conditions. Complete Terms and Conditions including Warranty and Limitation of Liability information can be found on our website.

Copyright Cayman Chemical Company, 02/19/2018

#### CAYMAN CHEMICAL

1180 EAST ELLSWORTH RD  
ANN ARBOR, MI 48108 · USA

**PHONE:** [800] 364-9897  
[734] 971-3335

**FAX:** [734] 971-3640

CUSTSERV@CAYMANCHEM.COM  
[WWW.CAYMANCHEM.COM](http://WWW.CAYMANCHEM.COM)