



# SZABO SCANDIC

Part of Europa Biosite

## Produktinformation



Forschungsprodukte & Biochemikalien



Zellkultur & Verbrauchsmaterial



Diagnostik & molekulare Diagnostik



Laborgeräte & Service

Weitere Information auf den folgenden Seiten!  
See the following pages for more information!



### Lieferung & Zahlungsart

siehe unsere [Liefer- und Versandbedingungen](#)

### Zuschläge

- Mindermengenzuschlag
- Trockeneiszuschlag
- Gefahrgutzuschlag
- Expressversand

### SZABO-SCANDIC HandelsgmbH

Quellenstraße 110, A-1100 Wien

T. +43(0)1 489 3961-0

F. +43(0)1 489 3961-7

[mail@szabo-scandic.com](mailto:mail@szabo-scandic.com)

[www.szabo-scandic.com](http://www.szabo-scandic.com)

[linkedin.com/company/szaboscandic](https://www.linkedin.com/company/szaboscandic) 

# PRODUCT INFORMATION



## Linoleoyl Ethanolamide Phosphate

Item No. 9001837

CAS Registry No.: 419566-71-5

Formal Name: N-[2-(phosphonoxy)ethyl]-9Z,12Z-octadecadienamide, disodium salt

Synonym: phospho-Linoleoyl Ethanolamide  
phospho-LEA

MF:  $C_{20}H_{38}NO_5P \cdot 2Na$

FW: 449.5

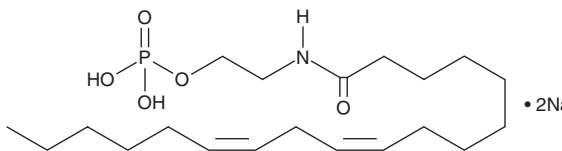
Purity:  $\geq 95\%$

Storage:  $-20^{\circ}C$

Stability:  $\geq 2$  years

Supplied as: A crystalline solid

Special Conditions: Hygroscopic



Information represents the product specifications. Batch specific analytical results are provided on each certificate of analysis.

### Laboratory Procedures

Linoleoyl ethanolamide phosphate is supplied as a crystalline solid. Aqueous solutions of linoleoyl ethanolamide phosphate can be prepared by directly dissolving the crystalline solid in aqueous buffers. The solubility of linoleoyl ethanolamide phosphate in PBS, pH 7.2, is approximately 2 mg/ml. We do not recommend storing the aqueous solution for more than one day.

### Description

Linoleoyl ethanolamide phosphate is an intermediate in the biosynthesis of linoleoyl ethanolamide (Item No. 90155) that can be generated through phospholipase C-mediated hydrolysis of N-acylphosphatidylethanolamine.<sup>1</sup> Linoleoyl ethanolamide phosphate, along with other endogenous N-acylethanolamines, is thought to play a role in the regulation of food intake by selective prolongation of feeding latency and post-meal interval.<sup>2</sup>

### References

1. Liu, J., Wang, L., Harvey-White, J., *et al.* Multiple pathways involved in the biosynthesis of anandamide. *Neuropharmacology* **54(1)**, 1-7 (2008).
2. Hansen, H.S. and Diep, T.A. N-acylethanolamines, anandamide and food intake. *Biochem. Pharmacol.* **78(6)**, 553-560 (2009).

#### WARNING

THIS PRODUCT IS FOR RESEARCH ONLY - NOT FOR HUMAN OR VETERINARY DIAGNOSTIC OR THERAPEUTIC USE.

#### SAFETY DATA

This material should be considered hazardous until further information becomes available. Do not ingest, inhale, get in eyes, on skin, or on clothing. Wash thoroughly after handling. Before use, the user must review the complete Safety Data Sheet, which has been sent via email to your institution.

#### WARRANTY AND LIMITATION OF REMEDY

Buyer agrees to purchase the material subject to Cayman's Terms and Conditions. Complete Terms and Conditions including Warranty and Limitation of Liability information can be found on our website.

Copyright Cayman Chemical Company, 12/14/2017

#### CAYMAN CHEMICAL

1180 EAST ELLSWORTH RD  
ANN ARBOR, MI 48108 · USA

PHONE: [800] 364-9897  
[734] 971-3335

FAX: [734] 971-3640

CUSTSERV@CAYMANCHEM.COM  
WWW.CAYMANCHEM.COM