



# SZABO SCANDIC

Part of Europa Biosite

## Produktinformation



Forschungsprodukte & Biochemikalien



Zellkultur & Verbrauchsmaterial



Diagnostik & molekulare Diagnostik



Laborgeräte & Service

Weitere Information auf den folgenden Seiten!  
See the following pages for more information!



### Lieferung & Zahlungsart

siehe unsere [Liefer- und Versandbedingungen](#)

### Zuschläge

- Mindermengenzuschlag
- Trockeneiszuschlag
- Gefahrgutzuschlag
- Expressversand

### SZABO-SCANDIC HandelsgmbH

Quellenstraße 110, A-1100 Wien

T. +43(0)1 489 3961-0

F. +43(0)1 489 3961-7

[mail@szabo-scandic.com](mailto:mail@szabo-scandic.com)

[www.szabo-scandic.com](http://www.szabo-scandic.com)

[linkedin.com/company/szaboscandic](https://www.linkedin.com/company/szaboscandic) 

Technically  
Speaking

**CEDARLANE**<sup>®</sup>  
[www.cedarlanelabs.com](http://www.cedarlanelabs.com)



Conveniently Delivering You Today's Innovations  
for the Science of Tomorrow™

### Anti-Rat CD5 Monoclonal Antibody

Catalogue#	Format	Size	Concentration	Isotype Control
<b>CL006A</b>	Ascites	0.5ml	NA	CLCMG100
<b>CL006AP</b>	Purified	250µg	1.0 mg/ml	CLCMG100
<b>CL006AP-S</b>	Purified	50µg	1.0 mg/ml	CLCMG100
<b>CL006AP-2</b>	Purified	500µg	1.0 mg/ml	CLCMG100
<b>CL006B</b>	Biotin	100µg	0.1 mg/ml	CLCMG115
<b>CL006B-5</b>	Biotin	500µg	0.1 mg/ml	CLCMG115
<b>CL006F</b>	FITC	100µg	0.1 mg/ml	CLCMG101
<b>CL006F-5</b>	FITC	500µg	0.1 mg/ml	CLCMG101
<b>CL006PE</b>	PE	50µg	0.1 mg/ml	CLCMG104

Isotype: Mouse IgG1

#### **DESCRIPTION:**

Cedarlane's anti-rat CD5 monoclonal antibody recognizes a determinant expressed on all rat thymocytes and peripheral T lymphocytes. It has been determined that there are 15,000 antigenic sites for CL006 per cell on thymocytes and 30,000 on peripheral T cells. This antibody does not bind to B cells, macrophages, NK cells or mast cells (2). No cross-reactivity has been detected with non-lymphoid cells in intestine, thymus, spleen or lymph node (2). The antigen recognized by CL006 is a surface glycoprotein of Mr 69 kDa (2), and is most likely the homologue of the mouse Ly 1 and human CD5 antigen. The antigen has also been shown to have an important functional role in T cell activation and differentiation indicating a use for this antibody in related studies. This antibody may be employed to label cells with anti-mouse Ig conjugated to fluorescein, peroxidase or <sup>125</sup>I. This clone is reported to work with frozen and paraffin sections (3, 4).

#### **PRESENTATION:**

**Ascites:** 0.5ml, Lyophilized.

**Purified:** Purified IgG buffered in PBS and 0.02% NaN<sub>3</sub>. (Purified from ascitic fluid via Protein G Chromatography). For maximum recovery of contents, spin down tube before use.

**Biotin, FITC and PE:** Biotin/FITC/PE conjugated IgG buffered in PBS, 0.02% NaN<sub>3</sub> and EIA grade BSA as a stabilizing protein to bring total protein concentration to 4-5 mg/ml.

#### **STORAGE/STABILITY:**

For all formats, store at 4°C. DO NOT FREEZE PE conjugates. For long term storage (**Ascites, Purified, Biotin, FITC**), aliquot and freeze unused portion at -20°C in volumes appropriate for single usage. Avoid freeze/thaw cycles.

*Continued Overleaf....*

Visit our website for your local distributor.

**CEDARLANE**<sup>®</sup>



[www.cedarlanelabs.com](http://www.cedarlanelabs.com)

An ISO 9001:2000 and ISO 13485:2003  
registered company.

In CANADA: Toll Free: 1-800-268-5058

4410 Paletta Court, Burlington, ON L7L 5R2 ph: (289) 288-0001, fax: (289) 288-0020  
e-mail: [general@cedarlanelabs.com](mailto:general@cedarlanelabs.com)

In the USA: Toll Free: 1-800-721-1644

1210 Turrentine Street, Burlington, NC 27215 ph: (336) 513-5135, fax: (336) 513-5138  
e-mail: [service@cedarlanelabs.com](mailto:service@cedarlanelabs.com)

## **SPECIFICATIONS:**

Clone: MRC OX-19

### Hybridoma Production:

Immunization: Immunogen: Rat thymocyte glycoproteins, depleted of LC-A, W3/13 antigen and Thy 1.  
Donor: BALB/c spleen  
Fusion Partner: P3-NSI-I-Ag4(NS1/1)

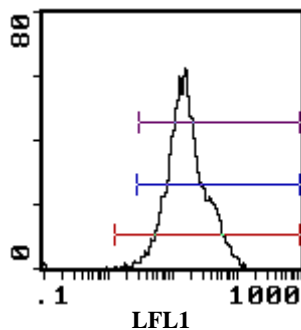
Specificity: Rat CD5

## **TEST RESULTS:**

### Tissue Distribution by Flow Cytometry Analysis:

Rat Strain: Wistar  
Cell Concentration:  $1 \times 10^6$  cells per test  
Antibody Concentration:  $0.5 \mu\text{g}/10^6$  cells

<u>Cell Source</u>	<u>Percentage of cells stained above control:</u>
Thymus	98.3
Spleen	31.7
Lymph Node	75.7



Cell Source: Thymocytes

**N.B. Appropriate control samples should always be included in any labelling studies.**

**\* For optimal results in various applications, it is recommended that each investigator determine dilutions appropriate for individual use.**

## **REFERENCES:**

1. Dallman, M.J., Mason, D.W. and M. Webb. (1982) Eur. J. Immunol. 12, 511-518. The role of host and donor cells in the rejection of skin allografts by T cell deprived rats injected with syngenic T cells.
2. Dallman, M.J., Thomas, M.L. and J.R. Green. (1984) Eur. J. Immunol. 14, 260-267. MRC OX-19: A monoclonal antibody that labels rat T lymphocytes and augments *in vitro* proliferative responses.
3. Barclay, A.N. (1981) Immunology, 42, 593-600. The localization of populations of lymphocytes defined with monoclonal antibodies in rat lymphoid tissues.
4. Whiteland, J.L et al (1995). Immunohistochemical detection of T cell subsets and other leukocytes in paraffin embedded rat and mouse tissues with monoclonal antibodies .J. Histochem. Cytochem. 43: 313-320.

**FOR RESEARCH USE ONLY**

® is a registered trademark of Cedarlane