



SZABO SCANDIC

Part of Europa Biosite

Produktinformation



Forschungsprodukte & Biochemikalien



Zellkultur & Verbrauchsmaterial



Diagnostik & molekulare Diagnostik



Laborgeräte & Service

Weitere Information auf den folgenden Seiten!
See the following pages for more information!



Lieferung & Zahlungsart

siehe unsere [Liefer- und Versandbedingungen](#)

Zuschläge

- Mindermengenzuschlag
- Trockeneiszuschlag
- Gefahrgutzuschlag
- Expressversand

SZABO-SCANDIC HandelsgmbH

Quellenstraße 110, A-1100 Wien

T. +43(0)1 489 3961-0

F. +43(0)1 489 3961-7

mail@szabo-scandic.com

www.szabo-scandic.com

[linkedin.com/company/szaboscandic](https://www.linkedin.com/company/szaboscandic) 

Technically
Speaking

CEDARLANE[®]
www.cedarlanelabs.com



Conveniently Delivering You Today's Innovations
for the Science of Tomorrow™

Anti-Rat CD5 Monoclonal Antibody

| Catalogue# | Format | Size | Concentration | Isotype Control |
|------------------|----------|-------|---------------|-----------------|
| CL006A | Ascites | 0.5ml | NA | CLCMG100 |
| CL006AP | Purified | 250µg | 1.0 mg/ml | CLCMG100 |
| CL006AP-S | Purified | 50µg | 1.0 mg/ml | CLCMG100 |
| CL006AP-2 | Purified | 500µg | 1.0 mg/ml | CLCMG100 |
| CL006B | Biotin | 100µg | 0.1 mg/ml | CLCMG115 |
| CL006B-5 | Biotin | 500µg | 0.1 mg/ml | CLCMG115 |
| CL006F | FITC | 100µg | 0.1 mg/ml | CLCMG101 |
| CL006F-5 | FITC | 500µg | 0.1 mg/ml | CLCMG101 |
| CL006PE | PE | 50µg | 0.1 mg/ml | CLCMG104 |

Isotype: Mouse IgG1

DESCRIPTION:

Cedarlane's anti-rat CD5 monoclonal antibody recognizes a determinant expressed on all rat thymocytes and peripheral T lymphocytes. It has been determined that there are 15,000 antigenic sites for CL006 per cell on thymocytes and 30,000 on peripheral T cells. This antibody does not bind to B cells, macrophages, NK cells or mast cells (2). No cross-reactivity has been detected with non-lymphoid cells in intestine, thymus, spleen or lymph node (2). The antigen recognized by CL006 is a surface glycoprotein of Mr 69 kDa (2), and is most likely the homologue of the mouse Ly 1 and human CD5 antigen. The antigen has also been shown to have an important functional role in T cell activation and differentiation indicating a use for this antibody in related studies. This antibody may be employed to label cells with anti-mouse Ig conjugated to fluorescein, peroxidase or ¹²⁵I. This clone is reported to work with frozen and paraffin sections (3, 4).

PRESENTATION:

Ascites: 0.5ml, Lyophilized.

Purified: Purified IgG buffered in PBS and 0.02% NaN₃. (Purified from ascitic fluid via Protein G Chromatography). For maximum recovery of contents, spin down tube before use.

Biotin, FITC and PE: Biotin/FITC/PE conjugated IgG buffered in PBS, 0.02% NaN₃ and EIA grade BSA as a stabilizing protein to bring total protein concentration to 4-5 mg/ml.

STORAGE/STABILITY:

For all formats, store at 4°C. DO NOT FREEZE PE conjugates. For long term storage (**Ascites, Purified, Biotin, FITC**), aliquot and freeze unused portion at -20°C in volumes appropriate for single usage. Avoid freeze/thaw cycles.

Continued Overleaf....

Visit our website for your local distributor.

CEDARLANE[®]



www.cedarlanelabs.com

An ISO 9001:2000 and ISO 13485:2003
registered company.

In CANADA: Toll Free: 1-800-268-5058

4410 Paletta Court, Burlington, ON L7L 5R2 ph: (289) 288-0001, fax: (289) 288-0020
e-mail: general@cedarlanelabs.com

In the USA: Toll Free: 1-800-721-1644

1210 Turrentine Street, Burlington, NC 27215 ph: (336) 513-5135, fax: (336) 513-5138
e-mail: service@cedarlanelabs.com

SPECIFICATIONS:

Clone: MRC OX-19

Hybridoma Production:

Immunization: Immunogen: Rat thymocyte glycoproteins, depleted of LC-A, W3/13 antigen and Thy 1.
Donor: BALB/c spleen
Fusion Partner: P3-NSI-I-Ag4(NS1/1)

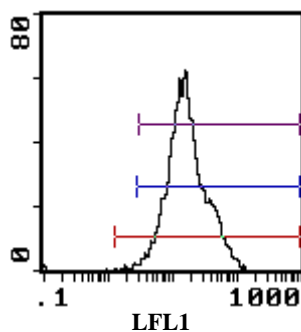
Specificity: Rat CD5

TEST RESULTS:

Tissue Distribution by Flow Cytometry Analysis:

Rat Strain: Wistar
Cell Concentration: 1×10^6 cells per test
Antibody Concentration: $0.5 \mu\text{g}/10^6$ cells

| <u>Cell Source</u> | <u>Percentage of cells stained above control:</u> |
|--------------------|---|
| Thymus | 98.3 |
| Spleen | 31.7 |
| Lymph Node | 75.7 |



Cell Source: Thymocytes

N.B. Appropriate control samples should always be included in any labelling studies.

*** For optimal results in various applications, it is recommended that each investigator determine dilutions appropriate for individual use.**

REFERENCES:

1. Dallman, M.J., Mason, D.W. and M. Webb. (1982) Eur. J. Immunol. 12, 511-518. The role of host and donor cells in the rejection of skin allografts by T cell deprived rats injected with syngenic T cells.
2. Dallman, M.J., Thomas, M.L. and J.R. Green. (1984) Eur. J. Immunol. 14, 260-267. MRC OX-19: A monoclonal antibody that labels rat T lymphocytes and augments *in vitro* proliferative responses.
3. Barclay, A.N. (1981) Immunology, 42, 593-600. The localization of populations of lymphocytes defined with monoclonal antibodies in rat lymphoid tissues.
4. Whiteland, J.L et al (1995). Immunohistochemical detection of T cell subsets and other leukocytes in paraffin embedded rat and mouse tissues with monoclonal antibodies .J. Histochem. Cytochem. 43: 313-320.

FOR RESEARCH USE ONLY

® is a registered trademark of Cedarlane