



# SZABO SCANDIC

Part of Europa Biosite

## Produktinformation



Forschungsprodukte & Biochemikalien



Zellkultur & Verbrauchsmaterial



Diagnostik & molekulare Diagnostik



Laborgeräte & Service

Weitere Information auf den folgenden Seiten!  
See the following pages for more information!



### Lieferung & Zahlungsart

siehe unsere [Liefer- und Versandbedingungen](#)

### Zuschläge

- Mindermengenzuschlag
- Trockeneiszuschlag
- Gefahrgutzuschlag
- Expressversand

### SZABO-SCANDIC HandelsgmbH

Quellenstraße 110, A-1100 Wien

T. +43(0)1 489 3961-0

F. +43(0)1 489 3961-7

[mail@szabo-scandic.com](mailto:mail@szabo-scandic.com)

[www.szabo-scandic.com](http://www.szabo-scandic.com)

[linkedin.com/company/szaboscandic](https://www.linkedin.com/company/szaboscandic) 

Technically  
Speaking

**CEDARLANE**<sup>®</sup>  
[www.cedarlanelabs.com](http://www.cedarlanelabs.com)



Conveniently Delivering You Today's Innovations  
for the Science of Tomorrow™

**Anti-Rat CD45  
Monoclonal Antibody**

Catalogue#	Format	Size	Concentration	Isotype Control
<b>CL009A</b>	Ascites	0.5ml	NA	CLCMG100
<b>CL009AP</b>	Purified	250µg	1.0 mg/ml	CLCMG100
<b>CL009AP-2</b>	Purified	500µg	1.0 mg/ml	CLCMG100
<b>CL009B</b>	Biotin	100µg	0.1 mg/ml	CLCMG115
<b>CL009B-5</b>	Biotin	500µg	0.1 mg/ml	CLCMG115
<b>CL009F</b>	FITC	100µg	0.1 mg/ml	CLCMG101
<b>CL009F-5</b>	FITC	500µg	0.1 mg/ml	CLCMG101
<b>CL009PE</b>	PE	50µg	0.1 mg/ml	CLCMG104
<b>CL009PE-4</b>	PE	200µg	0.1 mg/ml	CLCMG104

Isotype: Mouse IgG<sub>1</sub>

**DESCRIPTION:**

Cedarlane's anti-rat CD45 monoclonal antibody was raised against rat leukocyte common antigen and with this it was shown that the antigen existed in different forms on different lymphoid cell types. The thymocyte, T lymphocyte and B lymphocyte forms were found at about 180, 200 (multiple bands) and 240 (broad band) kDa, respectively [2]. This molecule carries much of the carbohydrate of thymocytes and shows interesting heterogeneity amongst T lymphocytes and B lymphocytes.

Applications include: Flow cytometry and this clone is reported to work with frozen sections.

**PRESENTATION:**

**Purified:** Purified IgG buffered in PBS and 0.02% NaN<sub>3</sub>. (Purified from ascitic fluid via Protein G Chromatography). For maximum recovery of contents, spin down tube before use.

**Biotin, FITC and PE:** Biotin/FITC/PE conjugated IgG buffered in PBS, 0.02% NaN<sub>3</sub> and EIA grade BSA as a stabilizing protein to bring total protein concentration to 4-5 mg/ml.

**STORAGE/STABILITY:**

For all formats, store at 4°C. DO NOT FREEZE PE conjugates. For long term storage (**Purified, Biotin, FITC**), aliquot and freeze unused portion at -20°C in volumes appropriate for single usage. Avoid freeze/thaw cycles.

*Continued Overleaf.....*

Visit our website for your local distributor.

**CEDARLANE**<sup>®</sup>



[www.cedarlanelabs.com](http://www.cedarlanelabs.com)

An ISO 9001:2000 and ISO 13485:2003  
registered company.

In CANADA: Toll Free: 1-800-268-5058

4410 Paletta Court, Burlington, ON L7L 5R2 ph: (289) 288-0001, fax: (289) 288-0020  
e-mail: [general@cedarlanelabs.com](mailto:general@cedarlanelabs.com)

In the USA: Toll Free: 1-800-721-1644

1210 Turrentine Street, Burlington, NC 27215 ph: (336) 513-5135, fax: (336) 513-5138  
e-mail: [service@cedarlanelabs.com](mailto:service@cedarlanelabs.com)

**SPECIFICATIONS:**

Clone: MRC OX-1

Hybridoma Production:

Immunization: Immunogen: Rat thymocyte membrane glycoproteins

Donor: BALB/c Spleen

Fusion Partner: NSI/1-Ag4-1

Specificity: Rat Leukocyte Common Antigen

**RESULTS:**

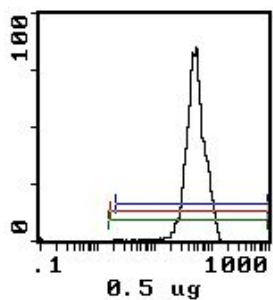
Tissue Distribution by Flow Cytometry Analysis:

Rat Strain: Wistar

Cell Concentration: 1x10<sup>6</sup> cells per test

Antibody Concentration: 0.5µg/10<sup>6</sup> cells

<u>Cell Source</u>	<u>Percentage of cells stained above control:</u>
Thymus	99.6%
Spleen	72.2%



Cell Source: Thymus

**N.B. Appropriate control samples should always be included in any labeling studies.**

**\* For optimal results in various applications, it is recommended that each investigator determine dilutions appropriate for individual use.**

**REFERENCES:**

1. Sunderland,C.A., McMaster, W.R., and A.F. Williams. (1979) Eur. J.Immunol. 9, 155-159. Purification with monoclonal antibody of a predominant leukocyte-common antigen and glycoprotein from rat thymocytes.
2. Woollett, G.R., Barclay, A.N., Puklavec, M. & Williams, A.F. (1985) Eur. J. Immunol. 15: 168-173. Molecular and antigenic heterogeneity of the rat leukocyte-common antigen from thymocytes and T and B lymphocytes.
3. Barclay, A.N., Jackson, D.I., Willis, A.C. & Williams, A.F. (1987) EMBO J. 6: 1259-1264. Lymphocyte specific heterogeneity in the rat leucocyte common antigen (T200) is due to differences in polypeptide sequences near the NH<sub>2</sub>-terminus.
4. Barclay , A.N. (1981). Immunology 42: 593-600. The localization of populations of lymphocytes defined by monoclonal antibodies in rat lymphoid tissues.

**FOR RESEARCH USE ONLY**  
® is a registered trademark of Cedarlane