



# SZABO SCANDIC

Part of Europa Biosite

## Produktinformation



Forschungsprodukte & Biochemikalien



Zellkultur & Verbrauchsmaterial



Diagnostik & molekulare Diagnostik



Laborgeräte & Service

Weitere Information auf den folgenden Seiten!  
See the following pages for more information!



### Lieferung & Zahlungsart

siehe unsere [Liefer- und Versandbedingungen](#)

### Zuschläge

- Mindermengenzuschlag
- Trockeneiszuschlag
- Gefahrgutzuschlag
- Expressversand

### SZABO-SCANDIC HandelsgmbH

Quellenstraße 110, A-1100 Wien

T. +43(0)1 489 3961-0

F. +43(0)1 489 3961-7

[mail@szabo-scandic.com](mailto:mail@szabo-scandic.com)

[www.szabo-scandic.com](http://www.szabo-scandic.com)

[linkedin.com/company/szaboscandic](https://www.linkedin.com/company/szaboscandic) 

Technically  
Speaking

**CEDARLANE**<sup>®</sup>  
[www.cedarlanelabs.com](http://www.cedarlanelabs.com)



Conveniently Delivering You Today's Innovations  
for the Science of Tomorrow™

**Anti-Mouse CD4 (L3/T4)  
Monoclonal Antibody**

Catalogue#	Format	Size	Concentration	Isotype Control
<b>CL012A</b>	Ascites	0.5ml	NA	CLCR2B00
<b>CL012AP</b>	Purified	250ug	1.0 mg/ml	CLCR2B00
<b>CL012NA</b>	Purified	1mg	1.0 mg/ml	CLCR2B00
<b>CL012B</b>	Biotin	100ug	0.1 mg/ml	CLCR2B15
<b>CL012B-3</b>	Biotin	300ug	0.1 mg/ml	CLCR2B15
<b>CL012F</b>	FITC	100ug	0.1 mg/ml	CLCR2B01
<b>CL012F-3</b>	FITC	300ug	0.1 mg/ml	CLCR2B01
<b>CL012PE</b>	PE	50ug	0.1 mg/ml	CLCR2B04
<b>CL012PE-3</b>	PE	300ug	0.1 mg/ml	CLCR2B04

Isotype: Rat IgG<sub>2b</sub>

**DESCRIPTION:**

The CD4 (L3/T4) antigen is thought to be the murine equivalent of the human Leu3/OKT4 antigen. This T cell surface molecule appears to be expressed by the helper/inducer subset of murine T cells and by delayed hypersensitivity T cells but not by cytotoxic T cells or their precursors. CD4 (L3/T4) and CD8a (Ly 2) have been shown to be present on mutually exclusive T cells in the peripheral lymphoid organs but the thymus contains cells expressing both CD4 (L3/T4) and CD8a (Ly 2).

Cedarlane's anti-mouse CD4 (L3/T4) mAb binds to approximately 85% of mouse thymocytes, 20% splenocytes, 50% lymph node cells, and a small number of bone marrow cells. It detects a protein of approximately 52 kDa on SDS-PAGE "Western Blots" (from Con A blast cell membranes) and is therefore similar to a well characterized human Leu3/T4 antigen (4).

Applications: flow cytometry.

**PRESENTATION:**

**Purified:** Purified IgG buffered in PBS and 0.02% NaN<sub>3</sub>. (Purified from ascitic fluid via Protein G Chromatography). For maximum recovery of contents, spin down tube before use.

**Biotin, FITC and PE:** Biotin/FITC/PE conjugated IgG buffered in PBS, 0.02% NaN<sub>3</sub> and EIA grade BSA as a stabilizing protein to bring total protein concentration to 4-5 mg/ml.

**No Azide:** Purified Ig buffered in PBS, no preservative, 0.2µm sterile filtered.

*Continued...*

Visit our website for your local distributor.

**CEDARLANE**<sup>®</sup>



[www.cedarlanelabs.com](http://www.cedarlanelabs.com)

An ISO 9001:2000 and ISO 13485:2003  
registered company.

**In CANADA: Toll Free: 1-800-268-5058**

4410 Paletta Court, Burlington, ON L7L 5R2 ph: (289) 288-0001, fax: (289) 288-0020  
e-mail: [general@cedarlanelabs.com](mailto:general@cedarlanelabs.com)

**In the USA: Toll Free: 1-800-721-1644**

1210 Turrentine Street, Burlington, NC 27215 ph: (336) 513-5135, fax: (336) 513-5138  
e-mail: [service@cedarlanelabs.com](mailto:service@cedarlanelabs.com)

### **STORAGE/STABILITY:**

For all formats, store at 4°C. DO NOT FREEZE PE conjugates. For long term storage (**Purified, Biotin, FITC, No Azide**), aliquot and freeze unused portion at -20°C in volumes appropriate for single usage. Avoid freeze/thaw cycles.

### **SPECIFICATIONS:**

Clone: YTS 191.1.2

#### Hybridoma Production:

Immunization: Immunogen: murine thymocytes  
Donor: (LOU x DA) F1 rats

Fusion Partner: Y3/Ag 1.2.3

Specificity: Mouse CD4 (L3/T4)

### **TEST RESULTS:**

#### Tissue Distribution by Flow Cytometry Analysis:

Mouse Strain: C57/BL6

Cell Concentration: 1x10<sup>6</sup> cells per test

Antibody Concentration Used: 0.1 µg/10<sup>6</sup> cells

#### Cell Source

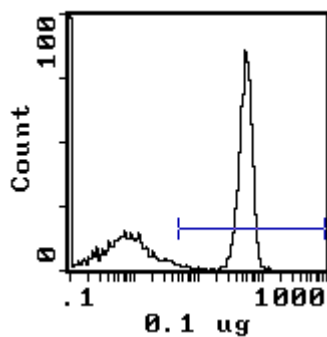
Thymus

Splenic T Cells\*

#### Percentage of cells stained above control:

95.7%

56.7%



Cell Source: Thymus

\*(T cells isolated with CL101 - Cedarlane's Mouse T Cell Recovery Column Kit)

**N.B. Appropriate control samples should always be included in any labeling studies.**

**\* For optimal results in various applications, it is recommended that each investigator determine dilutions appropriate for individual use.**

### **REFERENCES:**

- 1) Cobbold S.P., Jayasuriya A., Nash A., Prospero T.D., & Waldmann H., (1984) Nature. Therapy with monoclonal antibodies by elimination of T cell subsets *in vivo*. 312, 5994, 548-551.
- 2) Cobbold S.P., Martin G., Lovat P.C., & Waldmann H., 8th International Conference on Lymphatic Tissues and Germinal Centres. Plenum Press (Ed. Klaus G.) in press (1984) Immunosuppression with monoclonal antibodies - rules for effective serotherapy.
- 3) Agel N.M., Clark M., Cobbold S.P. & Waldmann H. (1984) J. Immunol. Methods. Immunohistological Screening in the selection of monoclonal antibodies: the use of isotype specific antiglobulins. 69, 207-214.
- 4) Dialynas D.P., *et al.* (1983) J. of Immunol. Characterization of the murine T cell surface antigen designated L3/T4, identified by monoclonal antibody GK1.5. Similarity of L3/T4 to human Leu3/T4 molecule. U131U, 2445-2451.

*Continued...*

- 5) Mueller, R. *et al.* (1997) *J. of Immunol.* 159: 1599-1603. IL-4 Expression by Grafts from Transgenic Mice Fails to Prevent Allograft Rejection.
- 6) Comes, A *et al.* 2006 *J Immunol* 176: 1750-1758
- 7) Croxford, JL. *Eta l*, 2001. *J Immunol.* 166:4124-4130
- 8) Martinic, MM *et al.* 2003. *PNAS* 100(4): 1861-1866
- 9) Roscic-Mrkic, B. *et al.* 2000. *J Virol.* 75(7): 3343-3351
- 10) Wang, Honglin, *et al*, 2010 *J. Invest Derm.* 130:743-754.
- 11) Wang, H. *et al.* 2006. *J Immunol* 176: 3525-3535

**FOR RESEARCH USE ONLY**

® is a registered trademark of Cedarlane Laboratories Ltd.

Jl 02/15/11