



SZABO SCANDIC

Part of Europa Biosite

Produktinformation



Forschungsprodukte & Biochemikalien



Zellkultur & Verbrauchsmaterial



Diagnostik & molekulare Diagnostik



Laborgeräte & Service

Weitere Information auf den folgenden Seiten!
See the following pages for more information!



Lieferung & Zahlungsart

siehe unsere [Liefer- und Versandbedingungen](#)

Zuschläge

- Mindermengenzuschlag
- Trockeneiszuschlag
- Gefahrgutzuschlag
- Expressversand

SZABO-SCANDIC HandelsgmbH

Quellenstraße 110, A-1100 Wien

T. +43(0)1 489 3961-0

F. +43(0)1 489 3961-7

mail@szabo-scandic.com

www.szabo-scandic.com

[linkedin.com/company/szaboscandic](https://www.linkedin.com/company/szaboscandic) 

TECHNICALLY *Speaking*

Place your order with CEDARLANE® or your local distributor.

Please contact CEDARLANE® for lot specific information.

FITC Anti-Mouse CD4 (L3/T4) Monoclonal Antibody

CL013F
CL013F-3
LOT:

DESCRIPTION:

Cedarlane's CT-CD4 monoclonal antibody (mAb) recognizes mouse CD4 (L3T4) which is expressed on the majority of thymocytes and on the MHC class II restricted subset of mature T cells including Th cells^{1,2}. Mouse CD4 has also been reported to be present on multipotential hematopoietic stem cells, bone marrow myeloid precursors, and intrathymic precursors^{2,3}. As a coreceptor in the TCR complex, CD4 is involved in T cell activation through interaction with MHC class II on APC's and in signal transduction via protein tyrosine kinase lck¹.

This antibody is suitable for use in flow cytometry and is reported to work in immunohistochemistry on acetone fixed frozen sections.

PRESENTATION:

100 µg (**CL013F**) or 300 µg (**CL013F-3**) FITC conjugated Ig buffered in PBS, 0.1% NaN₃ and EIA grade BSA as a stabilizing protein to bring total protein concentration to 4-5 mg/ml.

STORAGE/STABILITY:

Store at 4°C. For long term storage, aliquot and freeze unused portion at -20°C in volumes appropriate for single usage. Avoid freeze/thaw cycles and prolonged exposure to light. Check label for expiry date.

For more information or to place an order please contact...

CEDARLANE®
LABORATORIES LIMITED



toll free: 1-800-268-5058
in North America

phone: (905) 878-8891 • fax: (905) 878-7800

5516 - 8th Line, R.R.#2, Hornby, Ontario, CANADA L0P 1E0

or visit our website for a list of our international distributors including contact information

website: www.cedarlanelabs.com • e-mail: info@cedarlanelabs.com

SPECIFICATIONS:

Clone: CT-CD4

Specificity: Mouse CD4

Ig Class: Rat IgG_{2a}

Antibody Concentration: 0.1 mg/ml

FLOW CYTOMETRY ANALYSIS:**Method:**

1. Prepare a cell suspension in media A. For cell preparations, deplete the red blood cell population with Lympholyte[®]-M cell separation medium (CL5030).
2. Wash 2 times.
3. Resuspend the cells to a concentration of 2×10^7 cells/ml in media A. Add 50 μ l of this suspension to each tube (each tube will then contain 1×10^6 cells, representing 1 test).
4. To each tube, add $\sim 1.0 \mu\text{g}^*$ of **CL013F** or **CL013F-3** per 1×10^6 cells.
5. Vortex the tubes to ensure thorough mixing of antibody and cells.
6. Incubate the tubes for 30 minutes at 4°C.
(It is recommended that the tubes be protected from light, since most fluorochromes are light sensitive.)
7. Wash 2 times at 4°C.
8. Resuspend the cell pellet in 50 μ l ice cold media B.
9. Transfer to suitable tubes for flow cytometric analysis containing 15 μ l of propidium iodide at 0.5 mg/ml in PBS. This stains dead cells by intercalating in DNA.

Media:

- A. Phosphate buffered saline (pH 7.2) + 5% normal serum of host species + sodium azide (100 μ l of 2M sodium azide in 100 mls).
- B. Phosphate buffered saline (pH 7.2) + 0.5% Bovine serum albumin + sodium azide (100 μ l of 2M sodium azide in 100 mls).

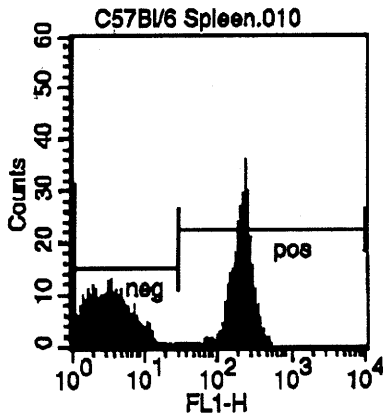
Results:Tissue Distribution by Flow Cytometry Analysis:

Mouse Strain: C57BL/6

Cell Concentration : 1×10^6 cells per test

Antibody Concentration Used: 1.0 μ g/ 10^6 cells

Isotypic Control: FITC Rat IgG_{2a} (CLCR2A01)



LFL1

Cell Source: CD3e Positive Spleen Cells

Percentage of cells stained above control: 52.4%

N.B. Appropriate control samples should always be included in any labeling studies.

*** For optimal results in various applications, it is recommended that each investigator determine dilutions appropriate for individual use.**

REFERENCES:

1. Bierer, B.E., et al. 1989. *Annu. Rev. Immunol.* 7: 579-599.
2. Fredrickson, G.G., and R.S. Basch. 1989. *J. Exp. Med.* 169: 1473-1478.
3. Wu, L., et al. 1991. *Nature.* 349: 71-74
4. Cobbold, S.P. et al. 1984 *Nature.* 312: 548-551.
5. Agel, N.M. et al. 1984 *J. Immunol.* 131: 2445-2451.
6. Dialynas, D.P. et al. 1993 *J. Immunol.* 131: 2445-2451.
7. Palathumpat, V. et al. 1992 *J. Immunol.* 148: 3319-3326.
8. Gross, J.A. et al. 1992 *J. Immunol.* 149:380-388.
9. Darby, C.R. et al. 1993 *J. Immunol.* 159: 125-129.
10. Darby, C.R. et al. 1992 *J. Immunol.* 54: 483-490.

FOR RESEARCH USE ONLY

® is a Registered Trademark of Cedarlane Laboratories Limited.